



# Danube Pond and Farr Lake Storm Improvements Project

Project Update - September 27, 2024

## Current Events:

This week the contractor mobilized onsite, installed traffic and erosion control and began removal and installation of the drainage structures. They completed the removal and installation of the drainage structures at 1420 West Danube Road and 5497 East Danube Road. Below is the anticipated schedule for the week of September 30<sup>th</sup> for replacement of the drainage structures:

Monday, September 30: 5587 East Danube Road  
Tuesday, October 1: 5505 West Danube Road  
Wednesday, October 2: 5605 West Danube Road  
Thursday, October 3: 5555 Matterhorn Drive  
Friday, October 4: 1298 52<sup>nd</sup> Avenue

The contractor will be closing the street for the day at each location listed above for the removal/installation of the drainage structures. See attached traffic control plans for each area listed above. Residents may utilize on-street parking outside of the road closed/active work areas scheduled above. Residents are asked to move any vehicles out of the driveway to alternate parking locations by 7:00 am for the dates/areas listed above. Residents will be allowed access back into their driveways at the end of the working day of the dates listed above.

***Please note that all construction scheduling is tentative, weather-dependent, and subject to change.***

## Stay Connected:

There will be no physical updates delivered for this project. All future project updates and notifications will be distributed via the project email list and posts to the City of Fridley's Danube Pond and Farr Lake Storm Improvements Project webpage at the following location:

<https://fridleymn.gov/1665/Danube-Pond-and-Farr-Lake-Storm-Improvem>

Residents are encouraged to send their name and address to [web-StreetProjects@fridleymn.gov](mailto:web-StreetProjects@fridleymn.gov) and request to be added to the project email list to receive the latest project updates.

## Construction

The Contractor's hours will be from 7:00 a.m. to 7:00 p.m., Monday-Friday. There is potential for occasional work outside of these hours upon City approval.

Please keep in mind that this type of construction may generate noise, dust, mud, and be disruptive to the area. Please be patient with the Contractor and contact us if you have any concerns we can help with.

## Resident Access

The City and Contractor will work to minimize inconvenience to residents during construction. Residents can expect to have driveway access during construction except when major construction events are occurring on their street. We ask that residents, including children, remain outside the immediate work zone and exercise caution navigating the project area wherever you see workers, equipment, or warning signs.

## Project Contacts

### Fridley Engineering Division

(763) 572-3554

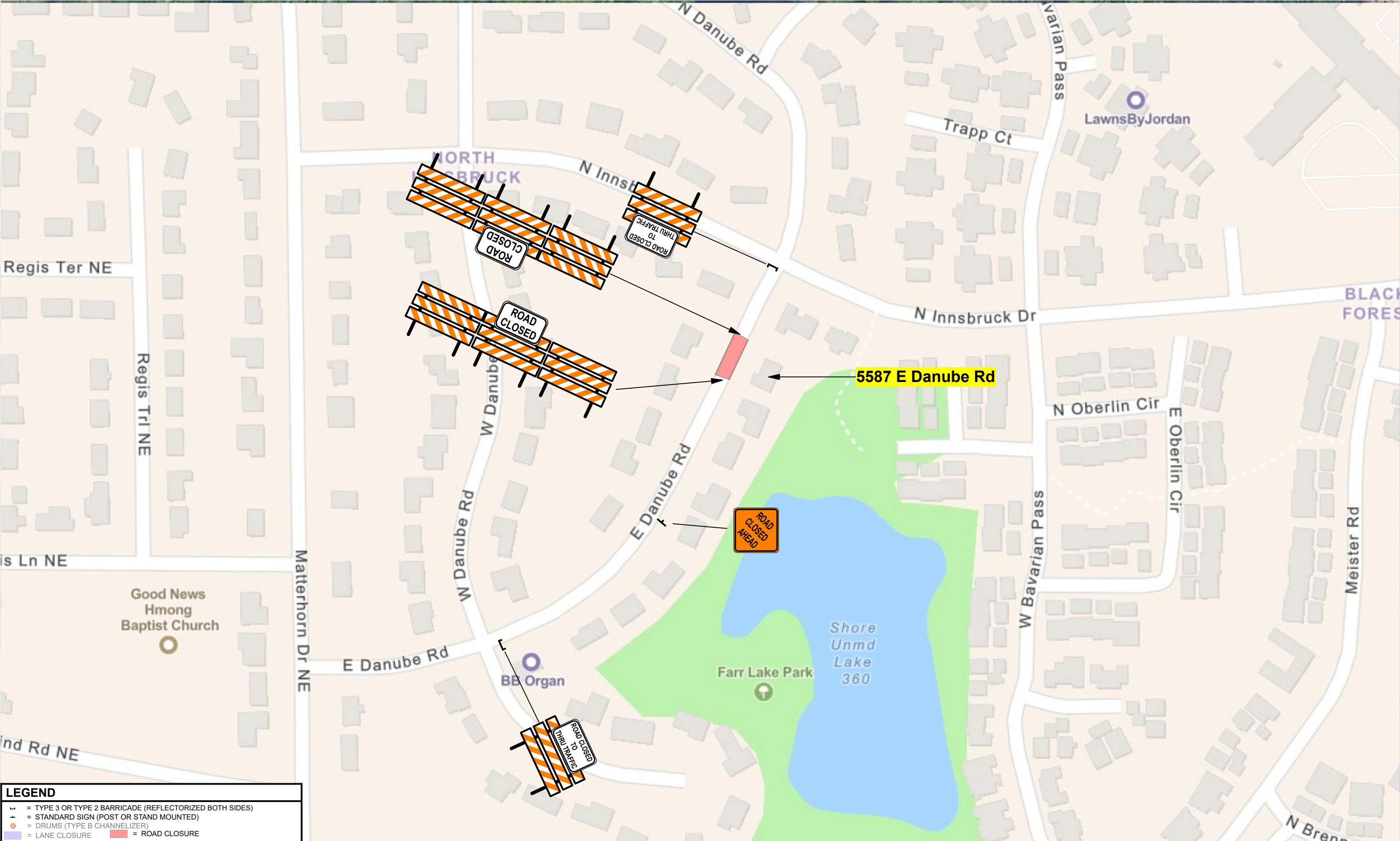
[web-StreetProjects@fridleymn.gov](mailto:web-StreetProjects@fridleymn.gov)

## Stay Connected!

The City will be posting all project updates and notifications on the Danube Pond and Farr Lake Storm Improvements Project page at the following location (QR Code):

<https://fridleymn.gov/1665/Danube-Pond-and-Farr-Lake-Storm-Improvem>





**LEGEND**

- = TYPE 3 OR TYPE 2 BARRICADE (REFLECTORIZED BOTH SIDES)
- = STANDARD SIGN (POST OR STAND MOUNTED)
- = DRUMS (TYPE B CHANNELIZER)
- = LANE CLOSURE    ■ = ROAD CLOSURE

8/8/2024	David Ostergaard
NO	DATE
REVISIONS	

SPEED LIMIT  
**30**



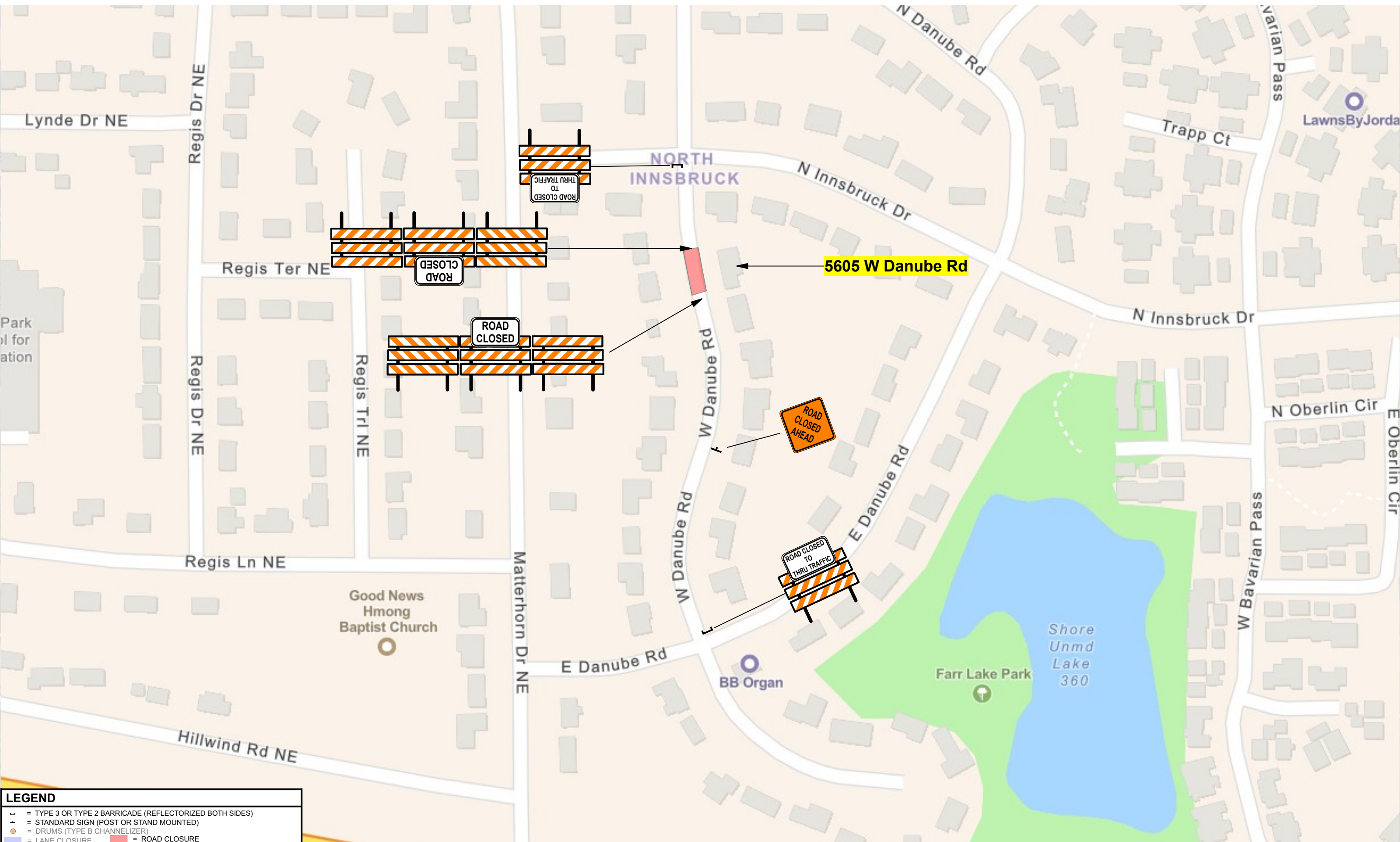
Disclaimer - This is a proposed traffic control device layout. It has not been prepared by a Professional Engineer and must be approved and accepted by the Road Authority. Safety Signs LLC does not assume any legal liability.



Rachel Contracting  
Various Road Closures



Matternhorn Dr NE & E Danube Rd - Fridley, MN		
PHASE 3	JOB# N/A	3 OF 8 SHEET



**LEGEND**

- = TYPE 3 OR TYPE 2 BARRICADE (REFLECTORIZED BOTH SIDES)
- = STANDARD SIGN (POST OR STAND MOUNTED)
- = DRUMS (TYPE B CHANNELIZER)
- = LANE CLOSURE    ■ = ROAD CLOSURE

8/8/2024	David Ostergaard	SPEED LIMIT <b>30</b>	
NO	DATE	REVISIONS	

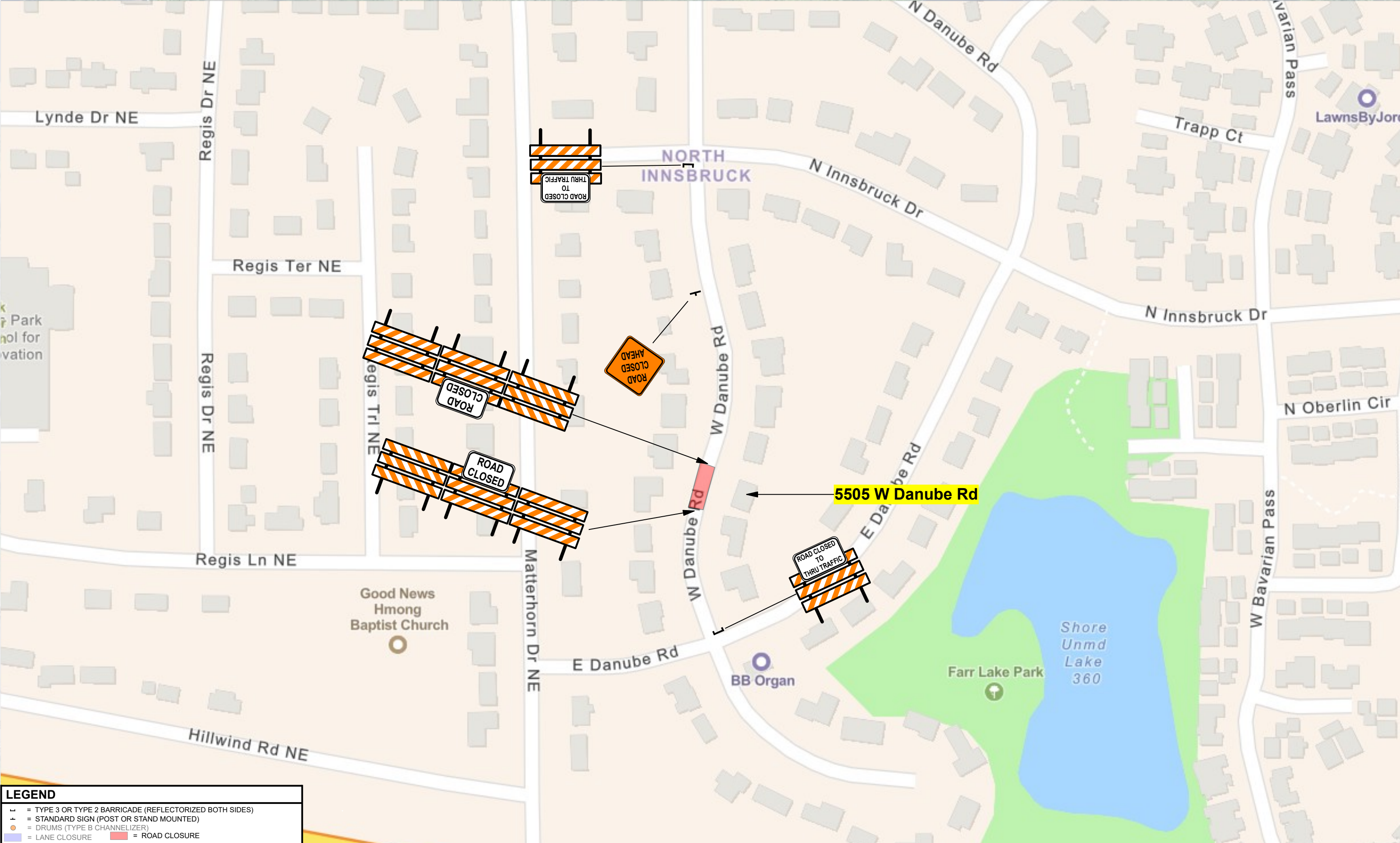
Disclaimer - This is a proposed traffic control device layout. It has not been prepared by a Professional Engineer and must be approved and accepted by the Road Authority. Safety Signs LLC does not assume any legal liability.



Rachel Contracting  
Various Road Closures



Matherhorn Dr NE & E Danube Rd - Fridley, MN  
 PHASE 1    JOB#    N/A    1 OF 8 SHEET



LEGEND	
	= TYPE 3 OR TYPE 2 BARRICADE (REFLECTORIZED BOTH SIDES)
	= STANDARD SIGN (POST OR STAND MOUNTED)
	= DRUMS (TYPE B CHANNELIZER)
	= LANE CLOSURE
	= ROAD CLOSURE
8/8/2024	David Ostergaard
SPEED LIMIT <b>30</b>	
NO	DATE
REVISIONS	

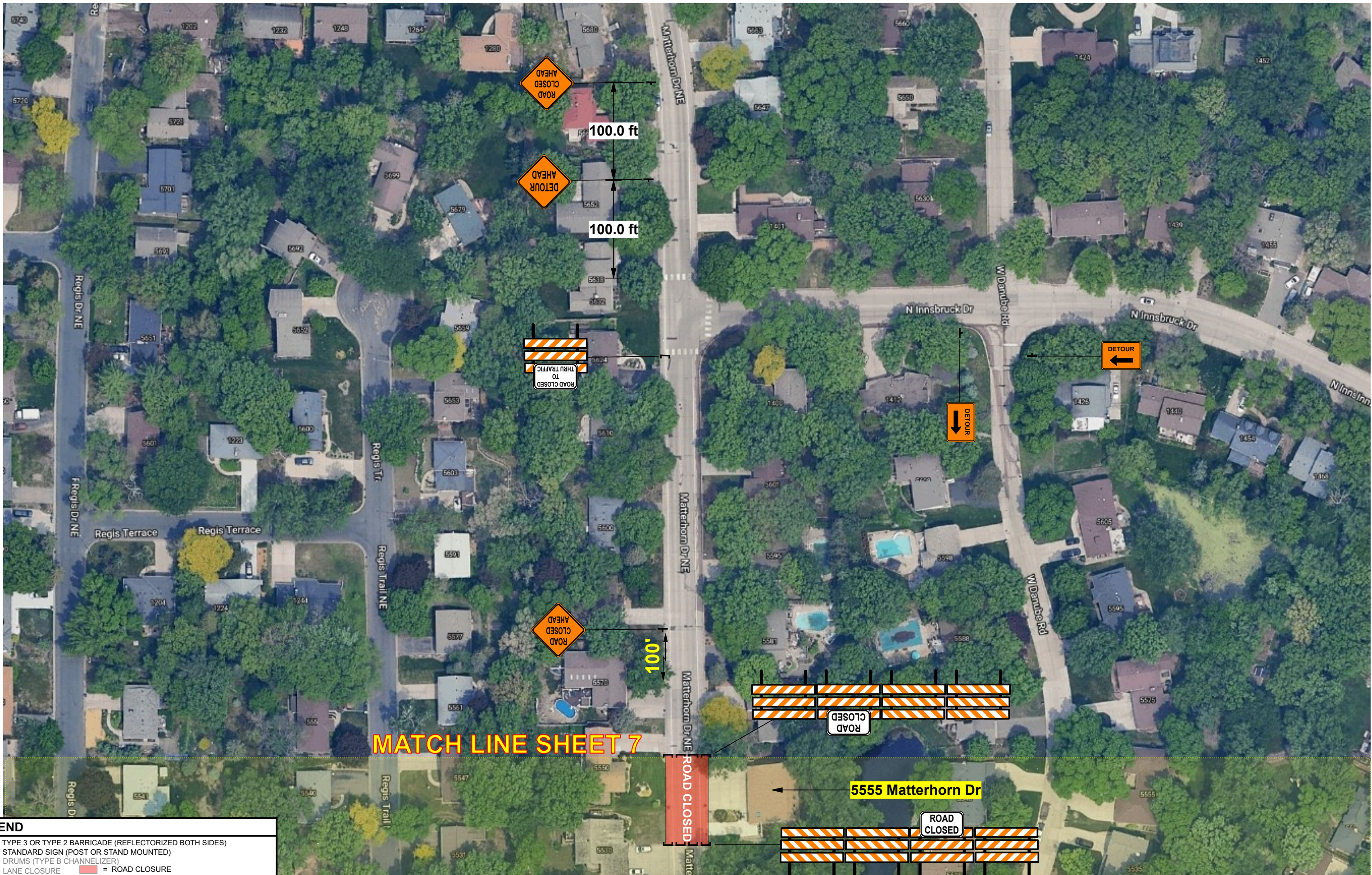
Disclaimer - This is a proposed traffic control device layout. It has not been prepared by a Professional Engineer and must be approved and accepted by the Road Authority. Safety Signs LLC does not assume any legal liability.



Rachel Contracting  
Various Road Closures



Matternhorn Dr NE & E Danube Rd - Fridley, MN			
PHASE 2	JOB#	N/A	2 OF 8 SHEET



**LEGEND**

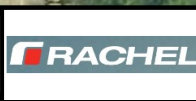
- = TYPE 3 OR TYPE 2 BARRICADE (REFLECTORIZED BOTH SIDES)
- = STANDARD SIGN (POST OR STAND MOUNTED)
- = DRUMS (TYPE B CHANNELIZER)
- = LANE CLOSURE    ■ = ROAD CLOSURE

8/8/2024	David Ostergaard
NO	DATE
	REVISIONS

SPEED LIMIT  
**30**



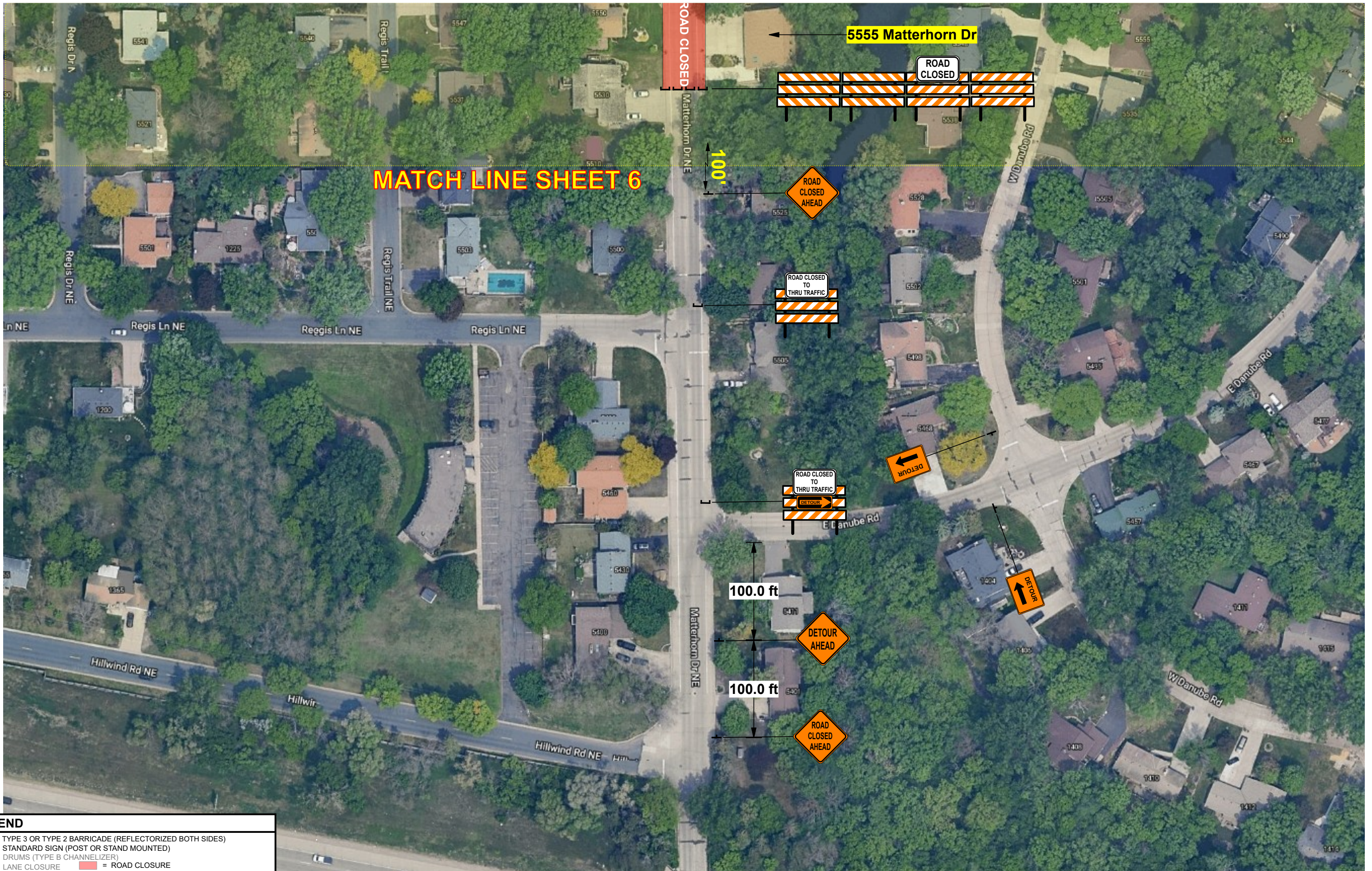
Disclaimer - This is a proposed traffic control device layout. It has not been prepared by a Professional Engineer and must be approved and accepted by the Road Authority. Safety Signs LLC does not assume any legal liability.



Rachel Contracting  
Various Road Closures



Matherhorn Dr NE & E Danube Rd - Fridley, MN		
PHASE 6	JOB# N/A	6 OF 8 SHEET



**MATCH LINE SHEET 6**

LEGEND	
	= TYPE 3 OR TYPE 2 BARRICADE (REFLECTORIZED BOTH SIDES)
	= STANDARD SIGN (POST OR STAND MOUNTED)
	= DRUMS (TYPE B CHANNELIZER)
	= LANE CLOSURE
	= ROAD CLOSURE
8/8/2024	David Ostergaard
SPEED LIMIT 30	
NO	DATE
REVISIONS	



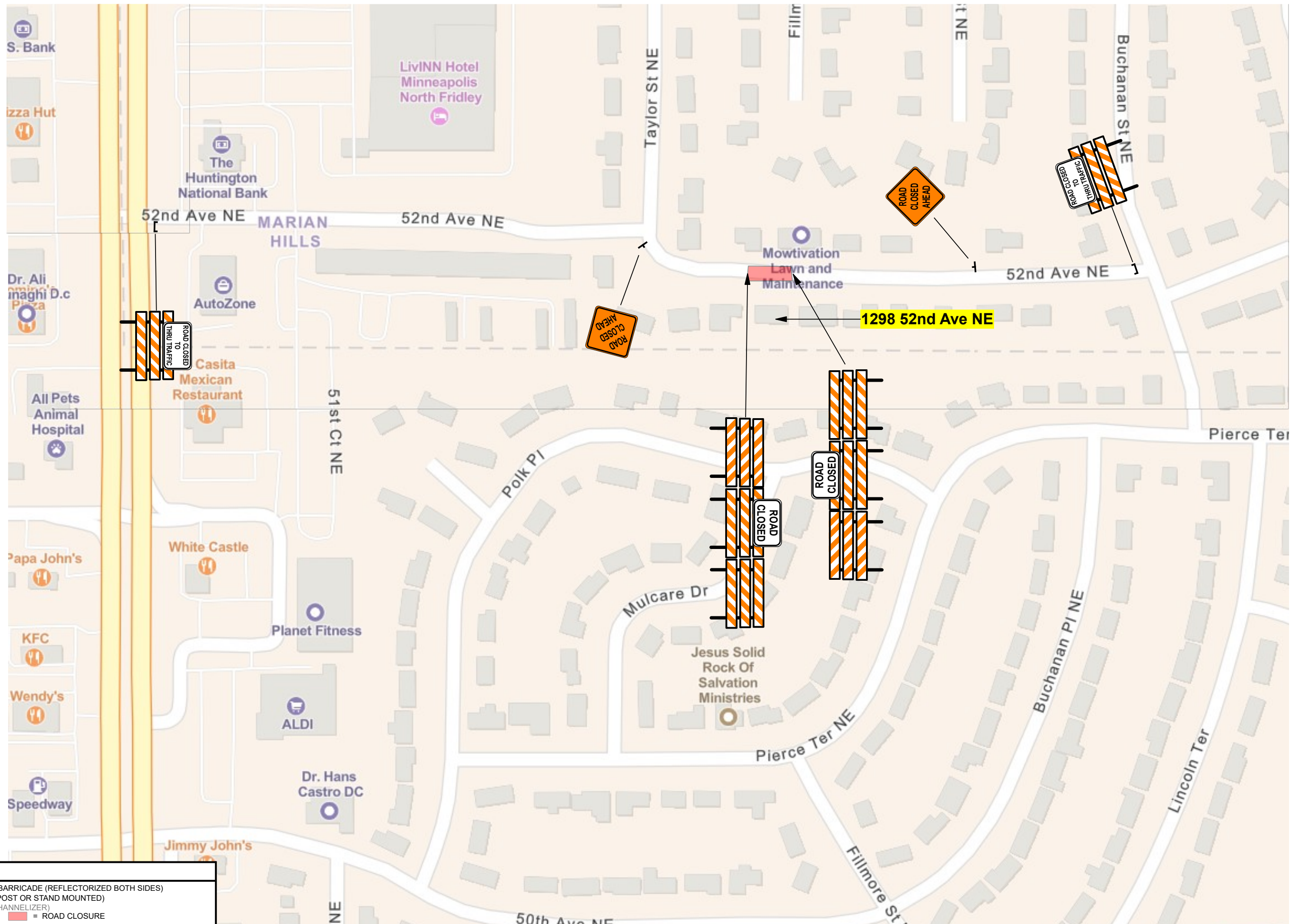
Disclaimer - This is a proposed traffic control device layout. It has not been prepared by a Professional Engineer and must be approved and accepted by the Road Authority. Safety Signs LLC does not assume any legal liability.



Rachel Contracting  
Various Road Closures



Matherhorn Dr NE & E Danube Rd - Fridley, MN  
PHASE 6 | JOB# N/A | 7 OF 8 SHEET



LEGEND	
	= TYPE 3 OR TYPE 2 BARRICADE (REFLECTORIZED BOTH SIDES)
	= STANDARD SIGN (POST OR STAND MOUNTED)
	= DRUMS (TYPE B CHANNELIZER)
	= LANE CLOSURE
	= ROAD CLOSURE
8/8/2024	David Ostergaard
SPEED LIMIT 30	
NO	DATE
REVISIONS	

Disclaimer - This is a proposed traffic control device layout. It has not been prepared by a Professional Engineer and must be approved and accepted by the Road Authority. Safety Signs LLC does not assume any legal liability.



Rachel Contracting  
Various Road Closures



1298 52nd Ave NE - Fridley, MN		
PHASE 7	JOB# N/A	8 OF 8 SHEET