



Danube Pond and Farr Lake Storm Improvements Project

Project Update - September 20, 2024

Current Events:

Rachel Contracting, the City's Project Contractor, will begin construction on September 24th. The contractor will begin mobilizing onsite, installing traffic and erosion control and begin removal and installation of the drainage structures. Below is the anticipated schedule for the week of September 23rd for replacement of the drainage structures:

Tuesday, September 24: 1420 West Danube Road
Wednesday, September 25: 5497 East Danube Road
Thursday, September 26: 5587 East Danube Road

The contractor will be closing the street for the day at each location listed above for the removal/installation of the drainage structures. See attached traffic control plans for each area listed above. Residents may utilize on-street parking outside of the road closed/active work areas scheduled above. Residents are asked to move any vehicles out of the driveway to alternate parking locations by 7:00 am for the dates/areas listed above. Residents will be allowed access back into their driveways at the end of the working day of the dates listed above.

Please note that all construction scheduling is tentative, weather-dependent, and subject to change.

Residents can anticipate a weekly update during construction, typically posted on Friday afternoon. Note work will be phased by the contractor, with substantial completion by the end of October.

Stay Connected:

There will be no physical updates delivered for this project. All future project updates and notifications will be distributed via the project email list and posts to the City of Fridley's Danube Pond and Farr Lake Storm Improvements Project webpage at the following location:

<https://fridleymn.gov/1665/Danube-Pond-and-Farr-Lake-Storm-Improvem>

Residents are encouraged to send their name and address to web-StreetProjects@fridleymn.gov and request to be added to the project email list to receive the latest project updates.

Stay Connected!

The City will be posting all project updates and notifications on the Danube Pond and Farr Lake Storm Improvements Project page at the following location (QR Code):

<https://fridleymn.gov/1665/Danube-Pond-and-Farr-Lake-Storm-Improvem>

Construction

The Contractor's hours will be from 7:00 a.m. to 7:00 p.m., Monday-Friday. There is potential for occasional work outside of these hours upon City approval.

Please keep in mind that this type of construction may generate noise, dust, mud, and be disruptive to the area. Please be patient with the Contractor and contact us if you have any concerns we can help with.

Resident Access

The City and Contractor will work to minimize inconvenience to residents during construction. Residents can expect to have driveway access during construction except when major construction events are occurring on their street. We ask that residents, including children, remain outside the immediate work zone and exercise caution navigating the project area wherever you see workers, equipment, or warning signs.

Project Contacts

Fridley Engineering Division

(763) 572-3554

web-StreetProjects@fridleymn.gov





LEGEND	
	= TYPE 3 OR TYPE 2 BARRICADE (REFLECTORIZED BOTH SIDES)
	= STANDARD SIGN (POST OR STAND MOUNTED)
	= DRUMS (TYPE B CHANNELIZER)
	= LANE CLOSURE
	= ROAD CLOSURE
8/8/2024	David Ostergaard
NO	DATE
	REVISIONS

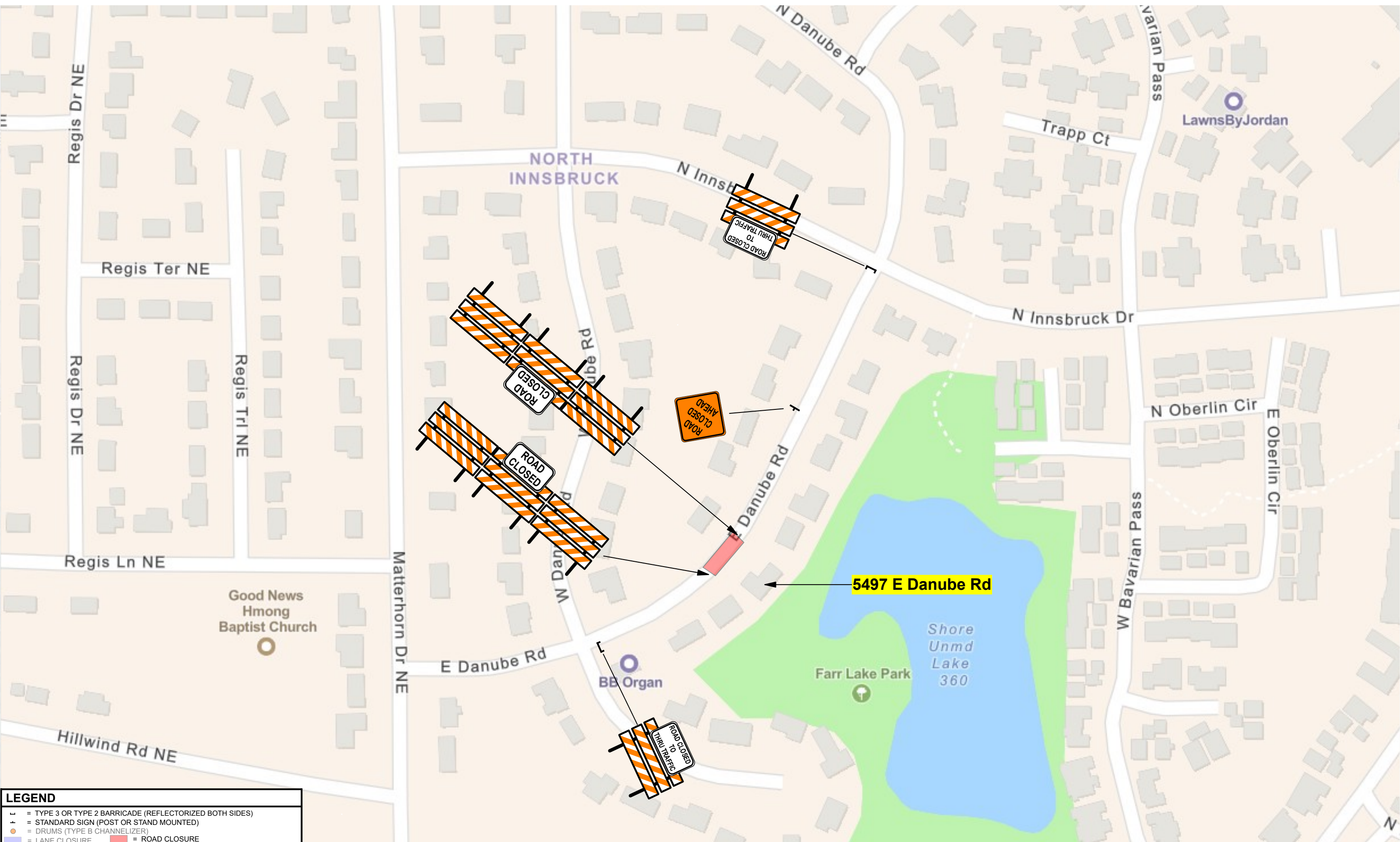
Disclaimer - This is a proposed traffic control device layout. It has not been prepared by a Professional Engineer and must be approved and accepted by the Road Authority. Safety Signs LLC does not assume any legal liability.



Rachel Contracting
Various Road Closures



Matterhorn Dr NE & E Danube Rd - Fridley, MN
PHASE 5 | JOB# N/A | 5 OF 8 SHEET



LEGEND

- = TYPE 3 OR TYPE 2 BARRICADE (REFLECTORIZED BOTH SIDES)
- + = STANDARD SIGN (POST OR STAND MOUNTED)
- = DRUMS (TYPE B CHANNELIZER)
- = LANE CLOSURE ■ = ROAD CLOSURE

8/8/2024	David Ostergaard	SPEED LIMIT 30	
NO	DATE	REVISIONS	

Disclaimer - This is a proposed traffic control device layout. It has not been prepared by a Professional Engineer and must be approved and accepted by the Road Authority. Safety Signs LLC does not assume any legal liability.



Rachel Contracting
Various Road Closures



Matterhorn Dr NE & E Danube Rd - Fridley, MN			
PHASE 4	JOB#	N/A	4 OF 8 SHEET



LEGEND

- = TYPE 3 OR TYPE 2 BARRICADE (REFLECTORIZED BOTH SIDES)
- = STANDARD SIGN (POST OR STAND MOUNTED)
- = DRUMS (TYPE B CHANNELIZER)
- = LANE CLOSURE ■ = ROAD CLOSURE

8/8/2024	David Ostergaard
NO	DATE
REVISIONS	

SPEED LIMIT
30



Disclaimer - This is a proposed traffic control device layout. It has not been prepared by a Professional Engineer and must be approved and accepted by the Road Authority. Safety Signs LLC does not assume any legal liability.



Rachel Contracting
Various Road Closures



Matternhorn Dr NE & E Danube Rd - Fridley, MN		
PHASE 3	JOB# N/A	3 OF 8 SHEET