

Final Report and Recommendations
of the
Refinement Task Force
for the
Park System Improvement Plan

January 3, 2022

January 3, 2022



Park System Improvement Plan Refinement Task Force Members

The City Council appointed the following residents serve on a resident Task Force to provide a set of recommendations regarding refinement of Fridley's Park System Improvement Plan. Task Force members included:

- Peter Borman
- Kim Ferraro
- Dan Gourde
- E.B. Graham
- Mike Heintz
- Jordan Hurst
- Malcolm Mitchell
- Liz Novotny
- Jeremy Powers
- Ken Schultz
- Maija Sedzielarz
- Jim Stangler
- Dan Whalen
- Traci Wuchter

Staff Liaisons:

- Mike Maher – Community Services Director
- Jeff Jensen – Director of Operations for Streets, Parks, and Facilities
- Melissa Moore – City Clerk

A special thank you to Candace Amberg from WSB Engineering for leading the consulting efforts to develop park concept plans and draft implementation plans based on Task Force input.



Department of Community Services
7071 University Avenue Northeast
Fridley, MN 55432
FridleyMN.gov

Introduction and Background

In 2019, the City of Fridley (City) began a comprehensive park system planning effort known as "Finding Your Fun In Fridley." After nearly two years of community engagement and more than 1,000 comments from residents and other stakeholders, the City developed the Draft Park System Improvement Plan (Plan). Generally, the Plan envisioned a park system responsive to the shifts in both the demographics and recreation trends of the Fridley community. It also proposed to address significant deferred maintenance and make an approximately \$50.8 million investment in park system.

Upon review of Plan and following additional feedback from the Fridley community at the Annual Town Hall Meeting, the City Council (Council) resolved to implement it at a cost not to exceed \$30 million or a 10-year timeline (Resolution No. 2021-51). These parameters recognized the financial limits of the City and the desire of the community to realize affordable park system improvement as soon as possible. However, even at this reduced cost, the Council also recognized the need to use debt (i.e., borrow money) to accomplish the Plan.

On June 28, 2021, the Council appointed two advisory committees to provide additional community input regarding Plan implementation. The Refinement Task Force (Task Force) group would work to moderate the Plan and its costs, while the Public Finance Advisory Committee would recommend the appropriate financing method(s) for the Plan. Both groups operated within the parameters set by the Council. This report outlines the efforts and recommendations of the Refinement Task Force.

Under the Council's guidance, on a schedule determined by the City Manager and agreed to by the Task Force, the group met a total of five times, convening monthly between August and December of 2021. The Task Force reviewed and provided input on updated park concept plans as well as options for implementation of thirty million dollars of park improvement over a 10-year period. As a result, this analysis and their discussions, the Task Force formed the recommendations found in the following section.

Recommendations

Implementation Plan

The City of Fridley contracted the firm WSB Engineering (WSB) to work with staff as a partner on the development of the Park System Improvement Plan. WSB began their process by visiting each of the City's parks and developing a detailed Park Service Area Analysis (**Attachment 1**). The City was divided into geographical park service areas which were categorized by having adequate, minimal, or poor levels of service in the Fridley park system. Further, parks were prioritized as being high priority or medium priority based on their impact to underserved areas of Fridley.

Exhibit A

The Task Force was informed of the park service area study and how it would be used to inform WSB's process to develop a plan that improved access and equity in the overall Plan.

The Task Force was presented with draft concept plans for each of the City's parks which had been refined in early 2021 through a robust community engagement process. Three of the City's parks, Moore Lake Park, Community Park and Commons Park had been designated as community parks due to their size, usage, amenities, and value to the community across of all Fridley's park service areas.

In many cases, proposed park refinements were clear and consistent with recommendations from previous community meetings, online comments, and surveys. In some cases, public feedback was not consistent, and the Task Force provided important input, which was used to develop a set of final, preferred concept plans (**Attachment 2**).

Once preferred park concept plans had been agreed upon, the Task Force evaluated two alternative options for implementing the park improvements in ten years for a cost not to exceed \$30 million dollars. These options were labeled "Draft Implementation Strategy - Approach # 1" and "Draft Implementation Strategy – Approach # 2" (**Attachment 3**). Each approach categorized park improvements into three categories; high priority (1-5 years), medium priority (5-10 years) and deferred (10+ years).

The key difference between the two plans is that "Approach # 1" defers improvements to Community Park in favor of funding for an increased number of neighborhood parks serving the park service areas in the minimal or poor service area categories. "Approach # 2", by contrast, calls for completion of all three community category parks; Moore Lake, Community and Commons Parks, yet left many neighborhood parks in the deferred category.

After evaluation of the two options, the Task Force felt that "Approach # 1" represented a more balanced and equitable approach across the Fridley community. A motion to endorse "Approach # 1" was passed by all 11 of the Task Force members in attendance at the December 9th, 2021 meeting. Minutes for of the Refinement Task Force meetings are included as (**Attachment 4**).

Conclusion

The Task Force remained engaged in the Park System Improvement Plan refinement process throughout the course of their work with excellent attendance at meetings, insightful questions and comments and numerous members spending time between meetings visiting parks and studying park plans.

The group approached the refinements with the objective of developing greater equity and accessibility within Fridley's overall park system. When conclusive, the Task Force supported refinements to park plans that had been made through previous public input.

Exhibit A

Recognizing that not every proposed park improvement was possible, the Task Force carefully studied each park improvement concept plan to provide guidance on refinements to improve each park and scale the overall park improvements into the budget framework directed by Council. Additionally, the Task Force reviewed two alternative implementation strategies and the eleven task force members present at the December 9th meeting, unanimously endorsed the strategy identified as "Approach #1".

Committee Charter

Park System Improvement Plan Refinement Advisory Committee

Mission

The resident advisement committee will serve as representatives of the Fridley community to provide feedback and advisement to city staff, the Parks and Recreation Commission and Fridley City Council on the park system improvement plan.

Framework

- The Park System Improvement Plan Refinement Advisory Committee (Committee) will consist of members of the Parks and Recreation Commission who elect to participate as well as community members appointed by the Fridley City Council.
- The Committee will have between 9 and 15 active members and new members may be appointed by the Fridley City Council.
- Active membership may be revoked at the discretion of the Community Services Director if a member does not attend two consecutive meetings without being excused.
- The Community Services Director will serve as the primary staff liaison to the Committee and will serve as the primary facilitator of Committee meetings.
- The Committee will begin meeting during the summer of 2021 and will meet monthly for up to one year or until the City Council has determined that the plan has been refined to meet the needs of the community within the identified budget.

Committee Meetings

- Meetings will be open to attend by the public and meeting locations, dates and times will be posted on the City of Fridley website at least five days prior to each meeting.
- Meeting minutes will be recorded and posted to the City of Fridley website.
- Committee meetings will be held the second Thursday of each month at the Fridley Civic Campus at 7 pm.
- Committee members may be asked to attend and participate in additional stakeholder meetings, resident meetings, or park events.

Committee Role

- The Committee will primarily focus on refinement of park improvement concept plans and building consensus on the priority of park improvements to fit into the budget.
- The Committee serves in an advisory capacity to city staff and does not provide formal approval of park plans or budgets.
- Committee recommendations will be used to inform and influence decision making by city staff, the Parks and Recreation Commission and City Council.



Exhibit A

- To promote public participation and input on the Park System Improvement Plan from the broader Fridley community.

Additional Information and Attachments

Attachment 1 – Park Service Area Analysis Maps

Attachment 2 – Preferred Park Concept Plans

Attachment 3 – Draft Implementation Strategy – Approach # 1 and Approach # 2

Attachment 4 – Park System Improvement Plan Refinement Task Force Meeting Minutes

- 1: Springbrook Nature Center** trails/ boardwalks, nature play area, amphitheater, programs
- Has private housing-provided recreation amenities (basketball, tennis, tot lot, pool)
 - High density
 - Low income
 - High minority
 - Young family age demographic

- 2a: SPRINGBROOK** tot lot, lawn
2b: GLENCOE full basketball, lawn
- Two small park lots
 - Low-medium density
 - Med-high income
 - Low minority
 - Family age to adult demographic

- 3: RUTH CIRCLE** tot lot, full basketball court, soccer/lawn, hockey rink, park bldg
- Med-high density
 - Medium income
 - Low minority

- 4a: RIVERVIEW HEIGHTS** trails, parking lot, natural areas along Mississippi River
4b: CRAIG double tennis court, half basketball, ballfield / open lawn, tot lot
- Lower density
 - High income
 - Low minority
 - Adult age demographic

- 5: MADSEN** tot lot, undersized full basketball court, single tennis, hockey rink, lawn, parking lot
- Can also service #6
 - Low-medium density
 - Medium income
 - Low-medium minority
 - Family age demographic

- 6: NO PARK** has private tot lot and full basketball court with lawn
- Relies on Madsen Park (lacking trail connection) and Woodcrest School
 - High density
 - Low income
 - Med-high minority
 - Young family age demographic

- 7: NO PARK**
- Relies on Flanery but has barriers
 - High density
 - Low income
 - High minority
 - Young family age demographic

- 8: FLANERY** tot lot, double tennis, half basketball, two ballfields, hockey rink, park building/shelter
- Can also service #7 & #9
 - Medium density
 - Medium minority
 - Higher income
 - Family to adult age demographic

- 9: NO PARK**
- Relies on Flanery but has barriers
 - Connection to Regional Trail
 - High density
 - Low income
 - High minority
 - Young family demographic

- 10: LOGAN PARK** single tennis, half basketball, tot lot, picnic shelter, ballfield
- Lower density
 - High income
 - Low minority
 - Adult age demographic

- 11: NO PARK**
- MRRT along E River Road
 - Medium density
 - Medium income
 - Lower minority
 - Family age demographic

- 12: NO CITY PARK**
- Direct access to Manomin Park & Regional Trail
 - Potential future opportunities at Camp Lockeslea site
 - Lower density
 - High income
 - Low minority
 - Adult age demographic

- 13a: COMMUNITY** Community park athletic complex, tot lot, parking
13b: PLAZA tot lot, half basketball
- Connection to two Regional Trails
 - Low density
 - Low income
 - Med-high minority
 - Family age demographic

- 14: CIVIC CAMPUS / LOCKE PARK**
- Relies on Fridley Civic Campus and Locke County Park (nature areas; trails, new playground, shelters, dog park)
 - Med-high density
 - High income
 - Low minority
 - Family to adult age demographic

- 15: CREEKVIEW** large tot lot, full basketball that feels private
- Informal connection to Regional Trail
 - Med-high density
 - Low income
 - High minority
 - Young family demographic

- 16a: LOCKE LAKE** trails to lake and connects Mississippi River Reg Trail and Rice Creek West Reg Trail
16b: EDGEWATER GARDENS single tennis, full basketball, tot lot, open lawn
- Connection to 2 Regional Trails
 - Medium density
 - Medium income
 - Lower minority
 - Family age demographic

- 17: JAY** tot lot, half basketball, lawn
- Connection to Regional Trail
 - Low density
 - Low income
 - Med-high minority
 - Family age demographic

- 23: NO PARK**
- Direct access to Regional Trail which provides access to #16 parks
 - Med-High density
 - Low income
 - Med-high minority
 - Young family age demographic

- 24: SYLVAN HILLS** tot lot, basketball, ballfield, single tennis, parking lot
- Mix of low density to Med-High density on north
 - Medium income
 - Lower minority
 - Family age to adult demographic

- 25: NO PARK**
- Trail access to Moore Lake
 - Low density
 - Medium income
 - Lower minority
 - Family to adult age demographic

- 30: BRIARDALE** tot lot, open lawn, park bldg, single tennis, full basketball
- Also served by Moore Lake and Innsbruck Nature Center
 - Low-medium density
 - Med-high income
 - Lower minority
 - Family to adult age demographic

- 31: SKYLINE** tot lot & full bball court
- High density
 - Lowest income
 - High minority
 - Young family age demographic

- 32: HACKMANN CIRCLE** tot lot, open lawn, full basketball
33: NO PARK Elementary School
- Also served by Moore Lake & Innsbruck Nature Center
 - Low-medium density
 - Med-high income
 - Lower minority
 - Family to adult age demographic

- 34a: INNSBRUCK NATURE CENTER**
34b: FARR LAKE
- Both natural conservation areas
 - Also served by Totino Grace
 - Higher density
 - Med-high income
 - Low minority
 - Adult age demographic

- 35: ALTURA** tot lot & bball court
- Med-High density
 - Lower income
 - Med-high minority
 - Family age demographic

- 36: JUBILEE** tot lot mid block
37: OAK HILL tot lot nice oaks
- Med-high density
 - Lower income
 - Med-high minority
 - Family age demographic

- 38: NO PARK**
- Rely on Kordiak & Ramsdell (Columbia Hts)
 - Medium density
 - Medium minority
 - Med-High income
 - Adult age demographic

- 39: SUMMIT SQUARE** 2 separate lots, tot lot, bball, single tennis, open lawn, underground storage
- Med-High density
 - Lower income
 - Med-high minority
 - Family age demographic

- 40: PLYMOUTH SQUARE** tot lot, basketball, open lawn
- Medium density
 - Medium income
 - Medium minority
 - Adult demographic

- A: NO PARK**
- Beyond 1/2 mile to #4 parks
 - Access Regional Trail & #10 Logan Park
 - Low density
 - High income
 - Low minority
 - Adult age demographic

- B1: WEST MOORE LAKE** Natural conservation area with foot paths
B2: RAY THOMPSON LL FIELDS special use athletic fields
- Also served by Commons Park and 2 school sites
 - Med-high density
 - Low-medium income
 - Med-high minority
 - Family age demographic

- C: NO PARK**
- Isolated neighborhood
 - Low-medium density
 - Medium income
 - Lower minority
 - Family age demographic

- D: NO PARK** private fitness, tot lot, pools, dog park
- High density
 - Range of incomes & demographics

- E: MOORE LAKE PARK** community park/beach, picnic areas & amenities
- Along primary vehicular corridor
 - Also serves neighborhoods lacking access to developed recreation (varying demographics)
 - Poor condition

MAP OVERVIEW

Park Service Levels are a general indication of outdoor recreation within each neighborhood area based on barriers and determined by the following factors:

- Adequate: Neighborhood has access to a park within a half-mile distance; park is of fair or good condition; park development meets needs of populations served
- Minimal: Neighborhood has access to a park or other recreation within a half-mile distance; park is of fair condition; park development meets minimal needs for populations served
- Poor: Neighborhoods currently lacking access to a park within a half-mile distance; park is in poor condition; park development does not meet needs of populations served

- 18: TERRACE** tot lot, single tennis, half basketball, ballfield
- Access to Locke Park trails
 - Also has Hayes Elementary
 - Medium density
 - Medium income
 - Low minority
 - Family to adult age demographic

- 19: MEADOWLANDS** tot lot, shelter, open lawn, loop trail around pond
- Access to Locke Park trails
 - Medium density
 - Medium income
 - Low minority
 - Family age demographic

- 20: NO PARK**
- Access to Regional Trail
 - Trail access to Moore Lake
 - Low to high density
 - Low to medium income
 - Low to medium minority
 - Young family to adult demographic

- 21: CREEKRIDGE** tot lot, shelter, ballfield/open lawn, single tennis, full basketball
- Medium density
 - Medium income
 - Lower minority
 - Family age demographic

- 22a: ED WILMES** tot lot
22b: RIVER EDGE WAY (undeveloped)
- Supplemented by School
 - On-street access to Regional Trail & Manomin Park
 - Med-High density
 - Low income
 - Med-high minority
 - Family age demographic

- 26: HARRIS LAKE** tot lot, shelter, lawn by lake
- Medium density
 - Medium income
 - Lower minority
 - Family to adult age demographic

- 27: NO PARK** private housing amenities, pools
- Relies on Elementary School
 - Access to Islands of Peace Park (natural)
 - Direct access to MRRT & Riverfront Park
 - High density
 - Low income
 - Med-high minority
 - Young family to older adult age demographics

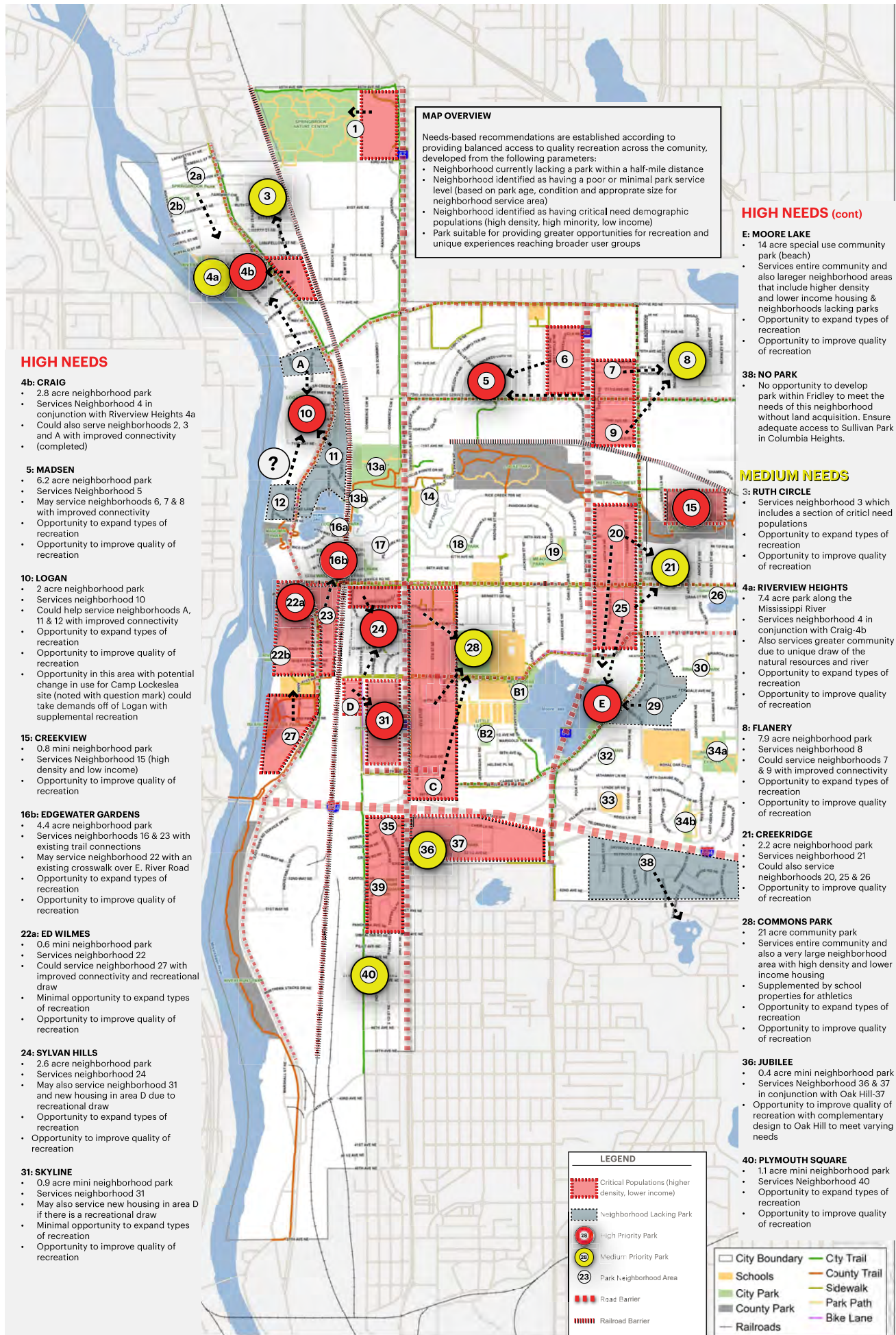
- 28: COMMONS** community park, ballfields, soccer, tennis, volleyball, tot lot, open lawn bldg
- Also served by Middle & High School amenities
 - Low-to-high density
 - Low-to-medium income
 - Medium minority
 - Family age demographic

- 29: NO PARK**
- Served by Moore Lake & Innsbruck Nature Center
 - Low-medium density
 - Med-high income
 - Lower minority
 - Family to adult age demographic

LEGEND

- Adequate Service Level
- Minimal Service Level
- Poor Service Level
- Road Barrier
- Railroad Barrier
- Park Neighborhood Area

Park Service Area Analysis



Park Priorities - Underserved Neighborhoods



Fridley Park Concepts - Commons Park

Fridley, Minnesota
 December 9, 2021 WSB Project number: 016927-000



1/12/2023 10:58 AM C:\Users\jmcroft\Documents\016927-000\Fridley Commons Park\016927-000.dwg



Fridley Park Concepts - Community Park

Fridley, Minnesota
 December 9, 2021 | WSB Project number: 016927-000



1/10/2022 10:58 AM C:\Users\jmc\OneDrive\Documents\Fridley\016927-000\Fridley Park Concepts - Community Park.dwg



Fridley Park Concepts - Moore Lake Park

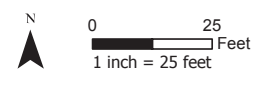
Fridley, Minnesota
 December 9, 2021 | WSB Project number: 016927-000



©2021 WSB Group, Inc. All rights reserved. WSB Group, Inc. is a registered trademark of WSB Group, Inc.



Altura Park
Park Implementation Project
Fridley, MN



Fridley Park System | Concept

Fridley, Minnesota
January, 2021 | WSB Project number: 016927-000

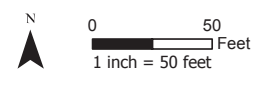


K:\016927-000\Graphics\016927 Park Concepts_Prefered

W:\2021\016927-000\GIS\MapInfo\Project\Fridley\Park\Concepts\016927 Park Concepts_Prefered.mxd



Briardale Park
Park Implementation Project
Fridley, MN



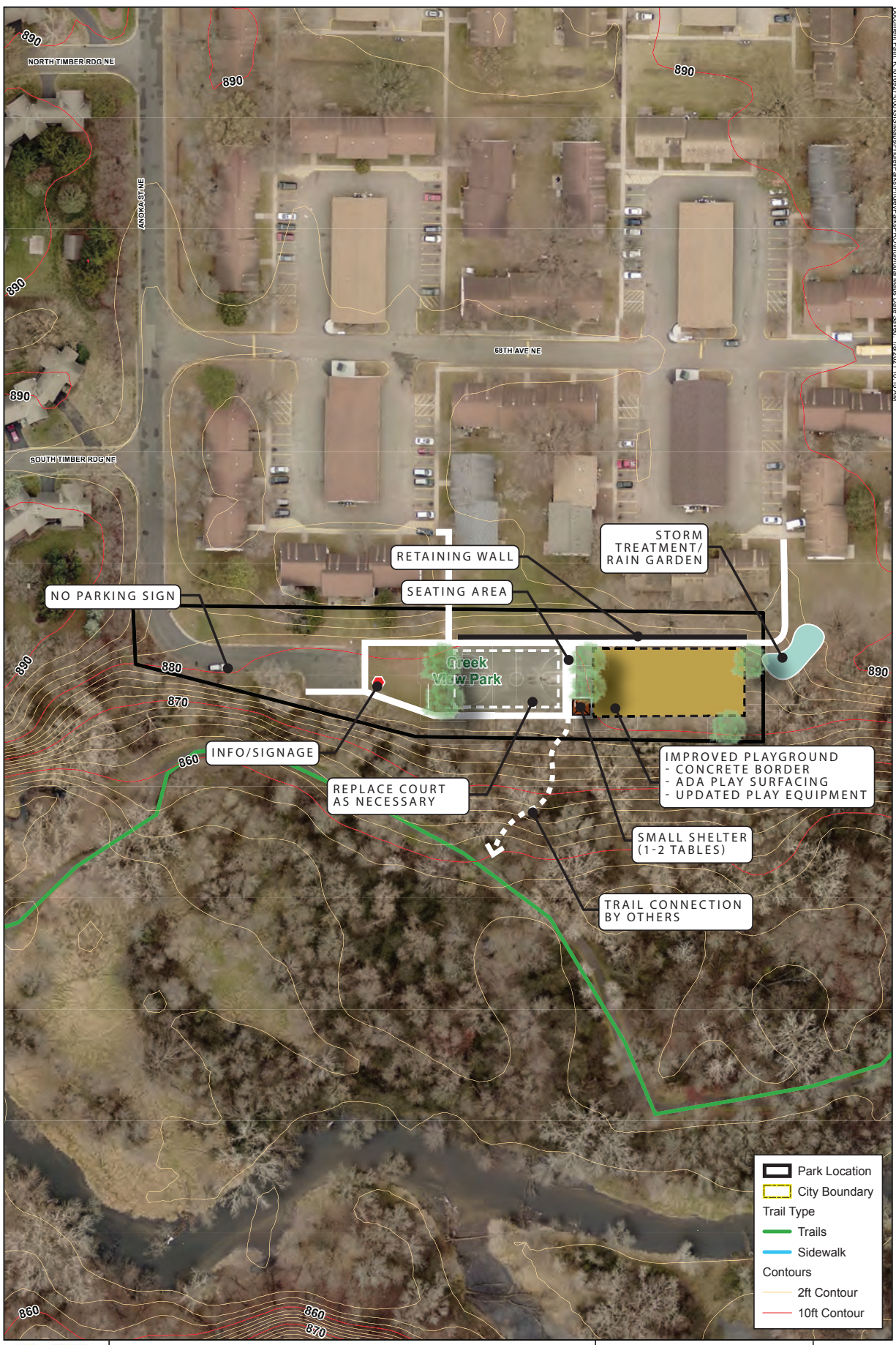
Fridley Park System | Concept

Fridley, Minnesota
January, 2021 | WSB Project number: 016927-000



K:\016927-000\Graphics\016927 Park Concepts_Prefered

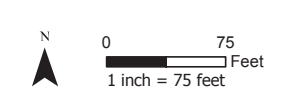
W:\216927-000\016927 Park Concepts_Prefered\016927 Park Concepts_Prefered.dwg 1/22/21 1:20:26 PM



K:\016927\000\Graphics\016927 Park Concepts_Prefered



Creek View Park
Park Implementation Project
Fridley, MN



Fridley Park System | Concept

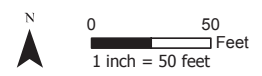
Fridley, Minnesota
January, 2021 | WSB Project number: 016927-000



K:\016927\000\Graphics\016927 Park Concepts_Prefered.dwg 2/2/2021 10:15:15 AM



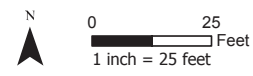
Creekridge Park
Park Implementation Project
Fridley, MN





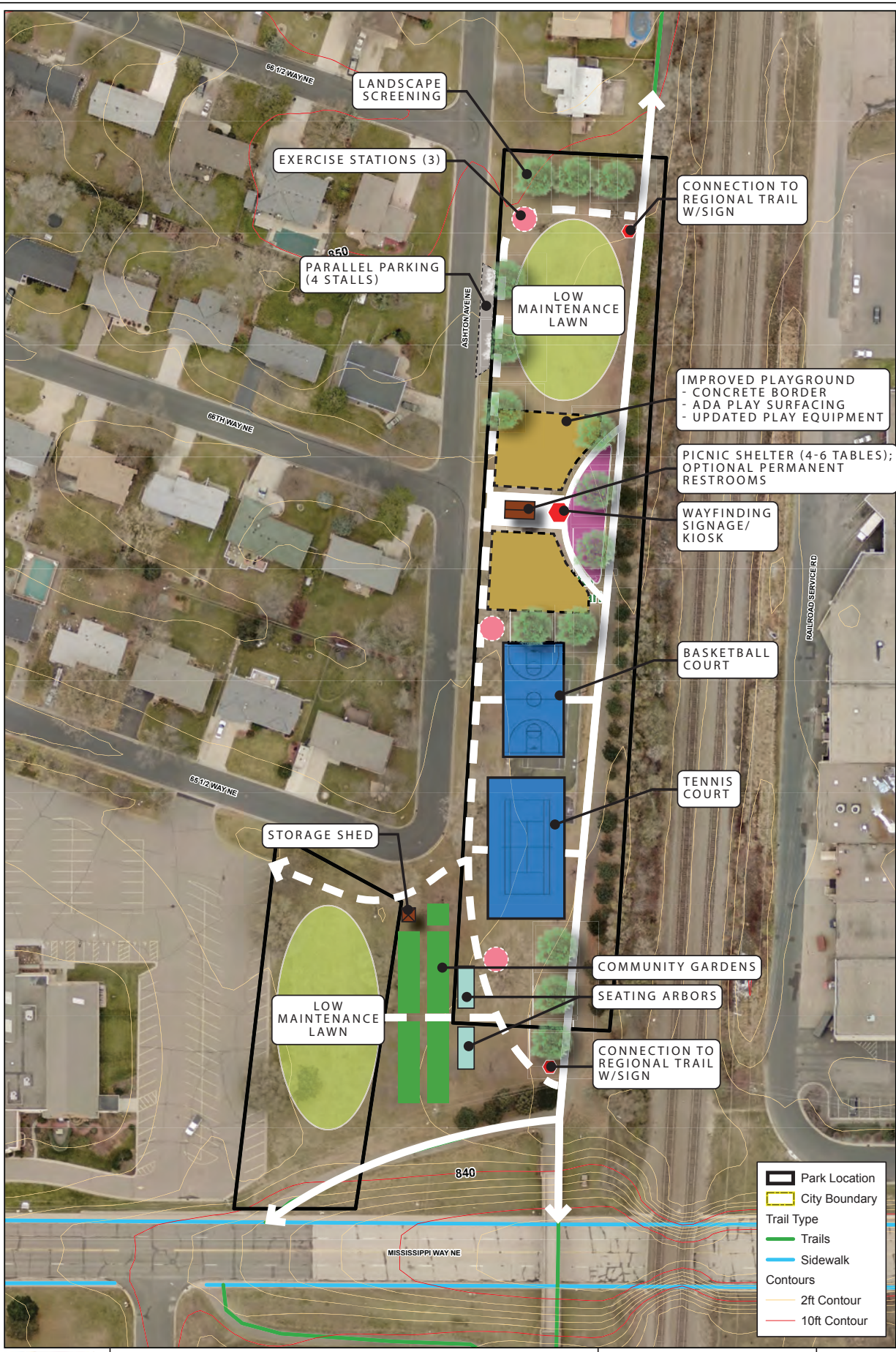
Ed Wilmes Park

Park Implementation Project
Fridley, MN

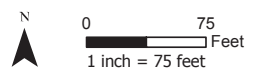


Fridley Park System | Concept





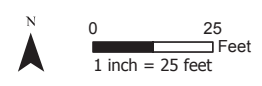
Edgewater Gardens Park
Park Implementation Project
Fridley, MN



K:\016927-000\Graphics\016927 Park Concepts_Prefered



Locke Lake Park
 Park Implementation Project
 Fridley, MN



Fridley Park System | Concept

Fridley, Minnesota
 January, 2021 | WSB Project number: 016927-000



K:\016927-000\Graphics\016927 Park Concepts_Prefered

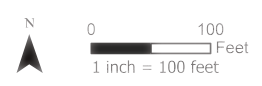
D:\016927-000\Graphics\016927 Park Concepts_Prefered



Document Path: K:\016927-000\GIS\MapSeries\Fridley_Park_System_Concept_Map_Series_102021_10x15_A4.mxd



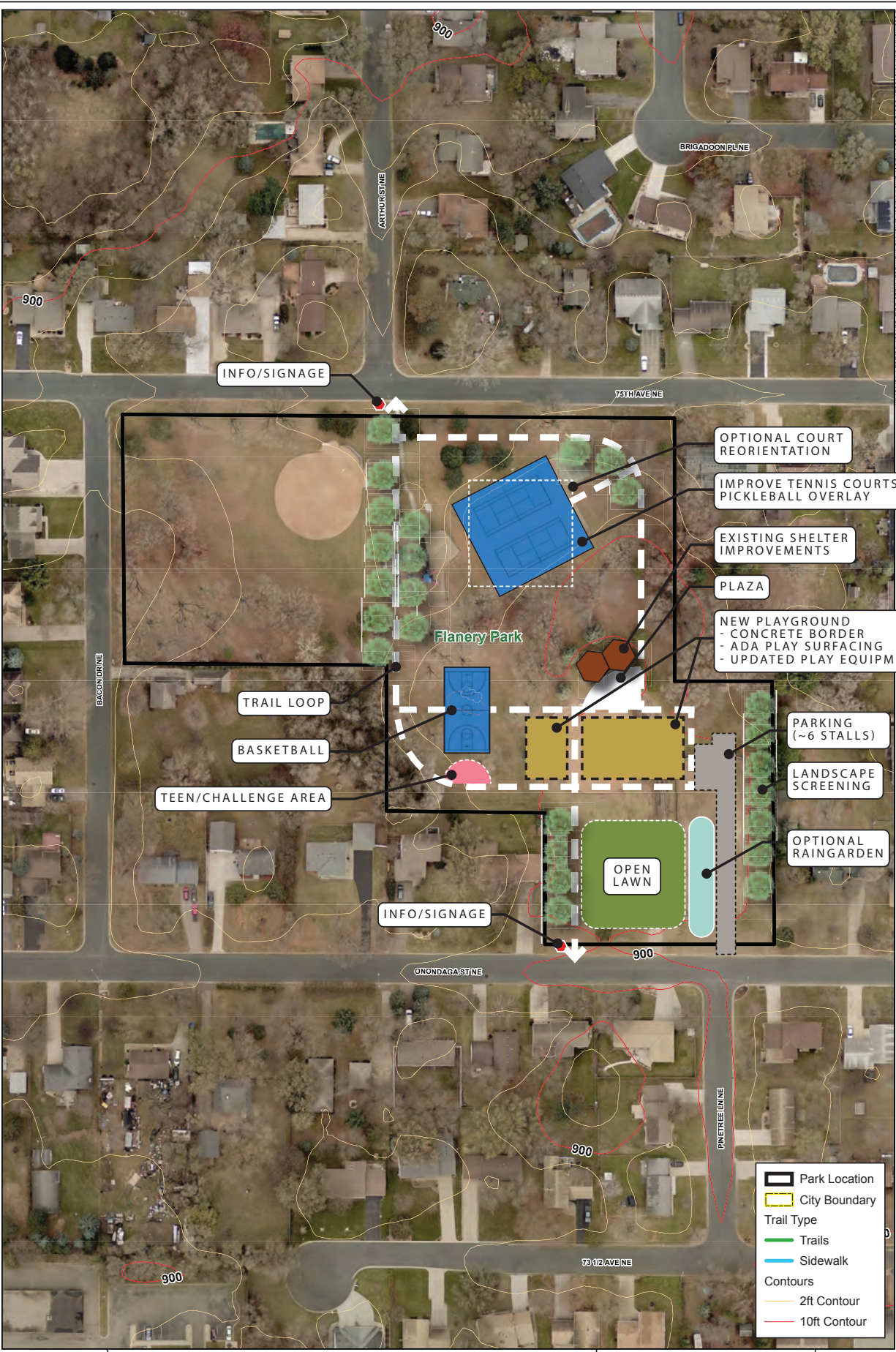
Farr Lake Park
Park Implementation Project
Fridley, MN



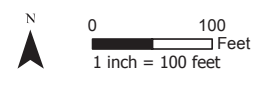
Fridley Park System | Concept

Fridley, Minnesota
January, 2021 | WSB Project number: 016927-000





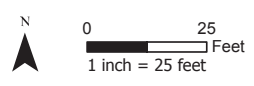
Flanery Park
Park Implementation Project
Fridley, MN



K:\016927-000\Graphics\016927 Park Concepts_Prefered



Springbrook Park
Park Implementation Project
Fridley, MN



Fridley Park System | Concept



Document Path: K:\016927-000\GIS\MapServer\Project\Fridley\Park\Concept\Aerial\Map_Series_Series_182921_10_15.AM



SMALL SHELTER
(1-2 TABLES)

BASKETBALL
COURT

LOW
MAINTENANCE
LAWN

OPTIONAL
RAIN GARDEN

LANDSCAPE SCREENING

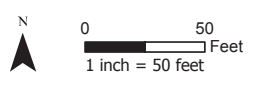
IMPROVED PLAYGROUND
- CONCRETE BORDER
- ADA PLAY SURFACING
- UPDATED PLAY EQUIPMENT

Legend

- Park Location
- City Boundary
- Trail Type**
- Trails
- Sidewalk
- Contours**
- 2ft Contour
- 10ft Contour



Hackmann Circle Park
Park Implementation Project
Fridley, MN

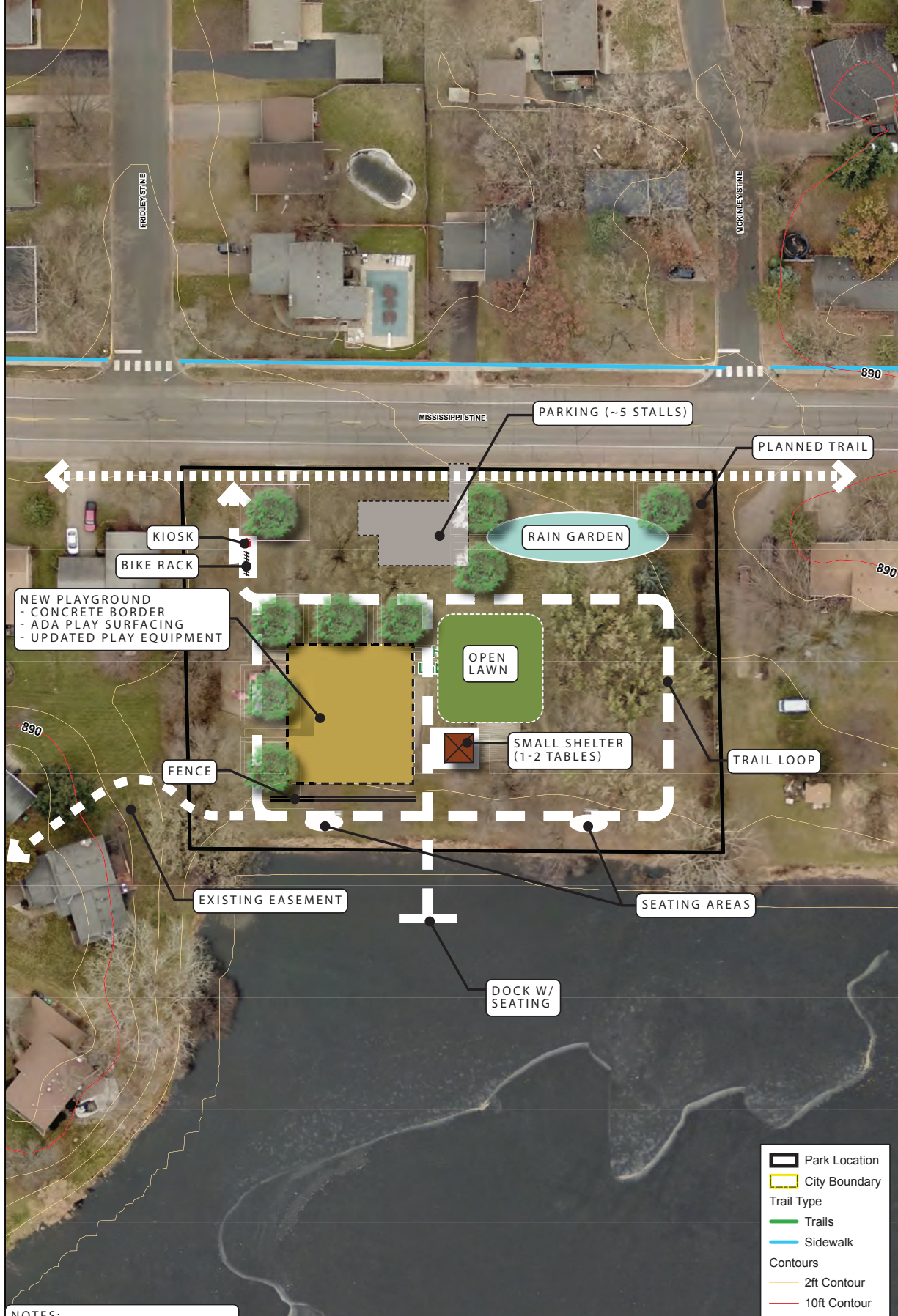


Fridley Park System | Concept

Fridley, Minnesota
January, 2021 | WSB Project number: 016927-000



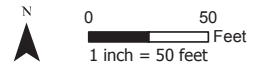
K:\016927-000\GIS\MapServer\Project\Fridley\Park\Concept\Aerial\Map_Series_Series_182921_10_15.AM



NOTES:
NATURALIZE SHORELINE



Harris Lake Park
Park Implementation Project
Fridley, MN



K:\016927-000\Graphics\016927 Park Concepts_Prefered

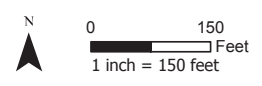
Fridley Park System | Concept

Fridley, Minnesota
January, 2021 | WSB Project number: 016927-000





Innsbruck Nature Center
Park Implementation Project
Fridley, MN



Fridley Park System | Concept

Fridley, Minnesota
January, 2021 | WSB Project number: 016927-000

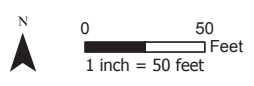


K:\016927-000\Graphics\016927 Park Concepts_Prefered

K:\016927-000\Graphics\016927 Park Concepts Preferred



Jay Park
Park Implementation Project
Fridley, MN

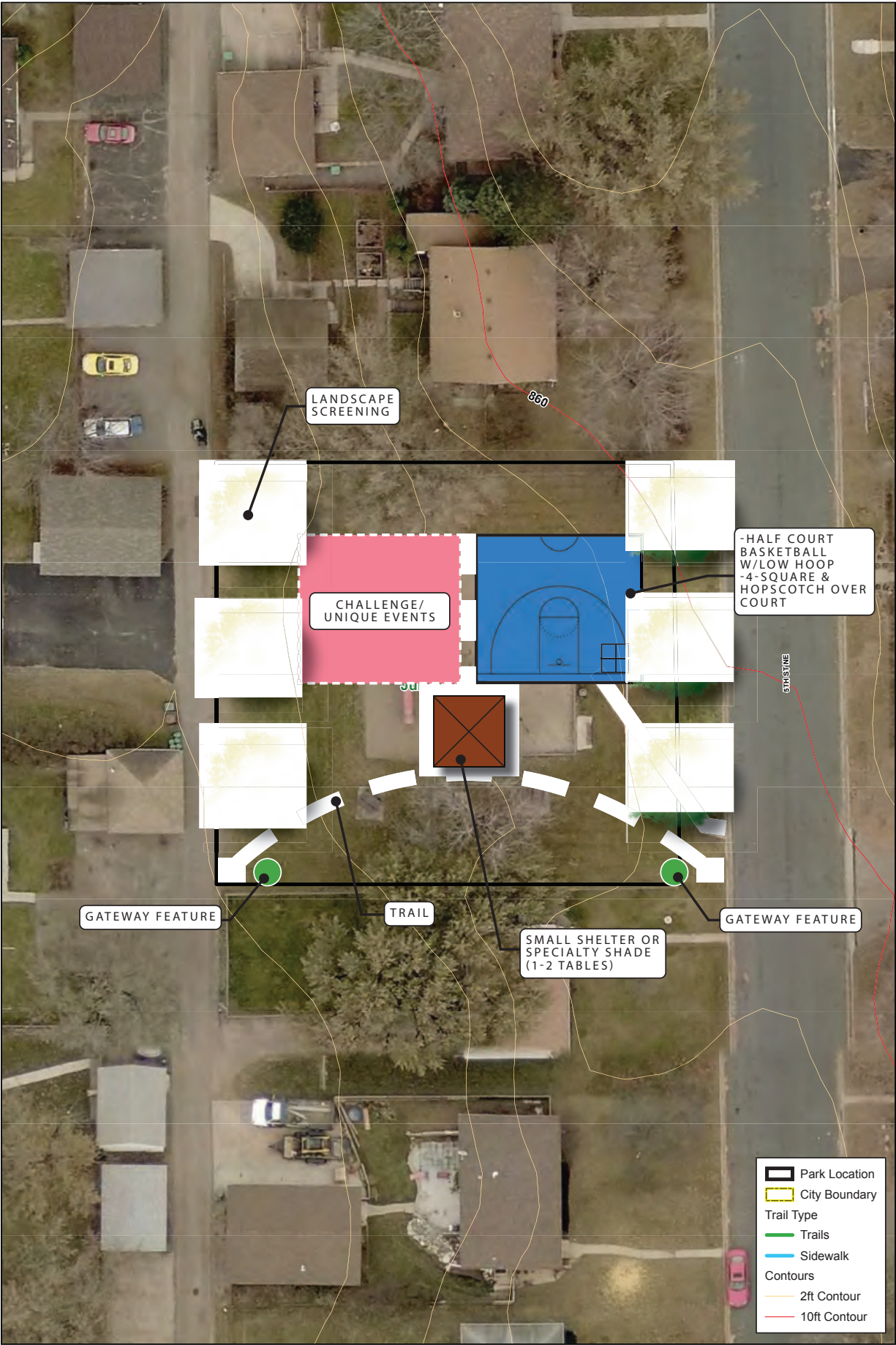


Fridley Park System | Concept

Fridley, Minnesota
January, 2021 | WSB Project number: 016927-000



Document Path: K:\016927-000\GIS\MapServer\Project\Fridley\Park\Concept\Jubilee Park_SitePlan_1/20/21 10:15 AM



GATEWAY FEATURE

LANDSCAPE SCREENING

CHALLENGE/ UNIQUE EVENTS

- HALF COURT BASKETBALL W/LOW HOOP - 4-SQUARE & HOPSCOTCH OVER COURT

TRAIL

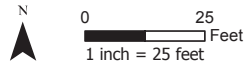
SMALL SHELTER OR SPECIALTY SHADE (1-2 TABLES)

GATEWAY FEATURE

- Park Location
- City Boundary
- Trail Type
- Trails
- Sidewalk
- Contours
- 2ft Contour
- 10ft Contour



Jubilee Park
Park Implementation Project
Fridley, MN



Fridley Park System | Concept

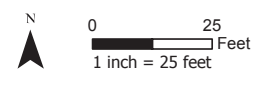
Fridley, Minnesota
January, 2021 | WSB Project number: 016927-000



K:\016927-000\Graphics\016927 Park Concept_Prefered



Oak Hill Park
 Park Implementation Project
 Fridley, MN



Fridley Park System | Concept

Fridley, Minnesota
 January, 2021 | WSB Project number: 016927-000

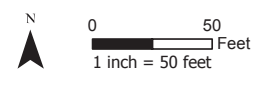


K:\016927-000\Graphics\016927 Park Concepts_Prefered

K:\016927-000\Graphics\016927 Park Concepts_Prefered\016927 Park Concepts_Prefered.dwg, 1/11/21, 1:05:27 PM



Little League Fields
Park Implementation Project
Fridley, MN



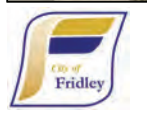
Fridley Park System | Concept

Fridley, Minnesota
January, 2021 | WSB Project number: 016927-000

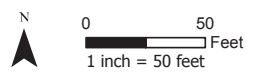


K:\016927-000\Graphics\016927 Park Concepts Preferred

W:\216927-000\016927 Park Concepts Preferred\Graphics\016927 Park Concepts Preferred



Logan Park
Park Implementation Project
Fridley, MN

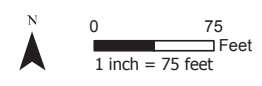


K:\016927-000\Graphics\016927 Park Concepts Preferred

Document Path: K:\016927-000\SAS\Map\Drawings\Fridley_Park\Conceptual\Map\Map_Sheet_016927_00_15A.MXD



Madsen Park
Park Implementation Project
Fridley, MN



Fridley Park System | Concept

Fridley, Minnesota
January, 2021 | WSB Project number: 016927-000



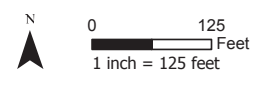
K:\016927-000\Graphics\016927 Park Concepts_Prefered



NOTES:
 MAINTAIN CROSS COUNTRY SKI TRAILS
 IMPROVE EXISTING TRAILS



Meadowlands Park
 Park Implementation Project
 Fridley, MN

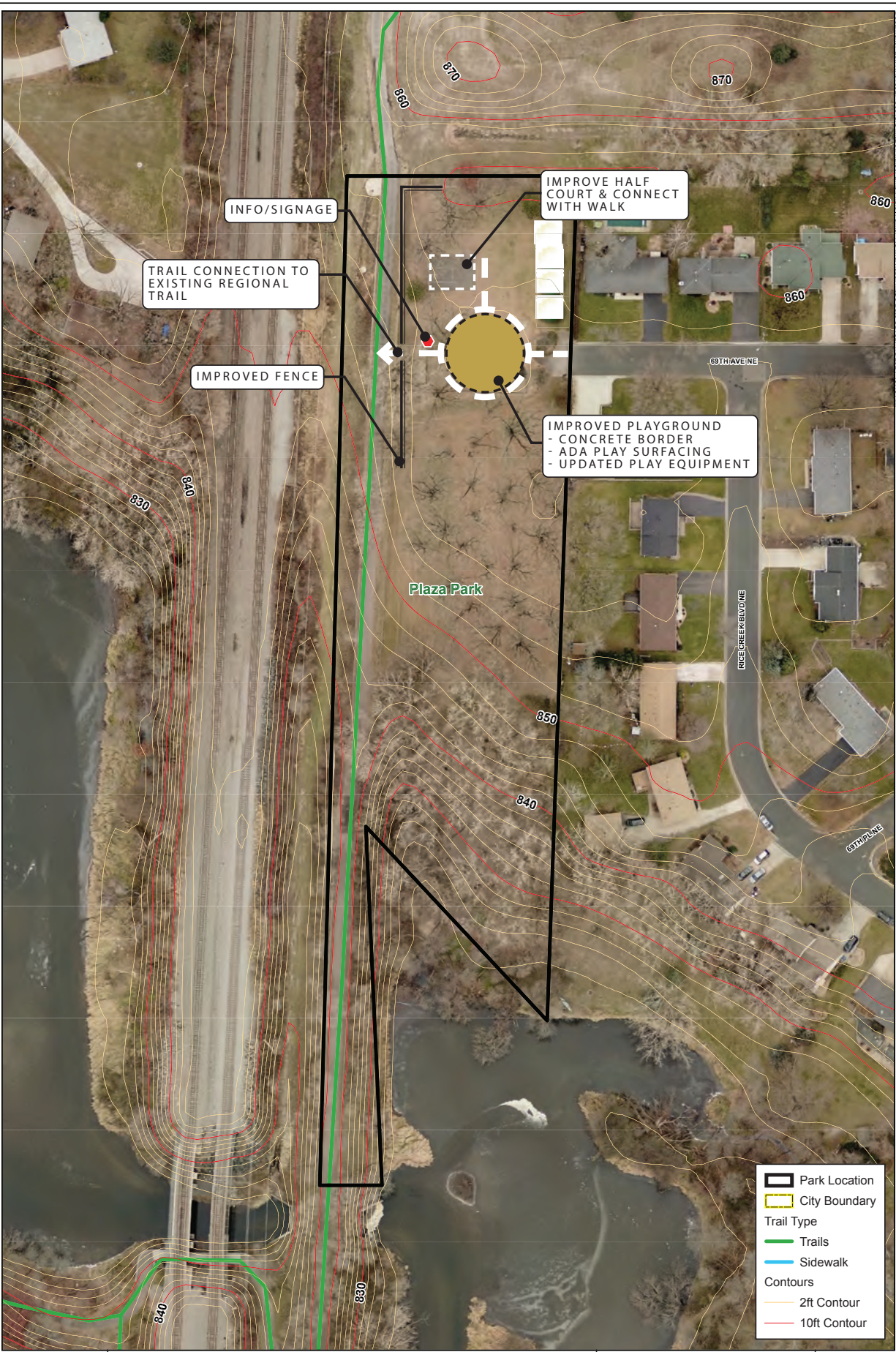


Fridley Park System | Concept

Fridley, Minnesota
 January, 2021 | WSB Project number: 016927-000



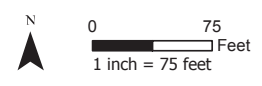
K:\016927-000\Graphics\016927 Park Concepts_Prefereed



	Park Location
	City Boundary
Trail Type	
	Trails
	Sidewalk
Contours	
	2ft Contour
	10ft Contour

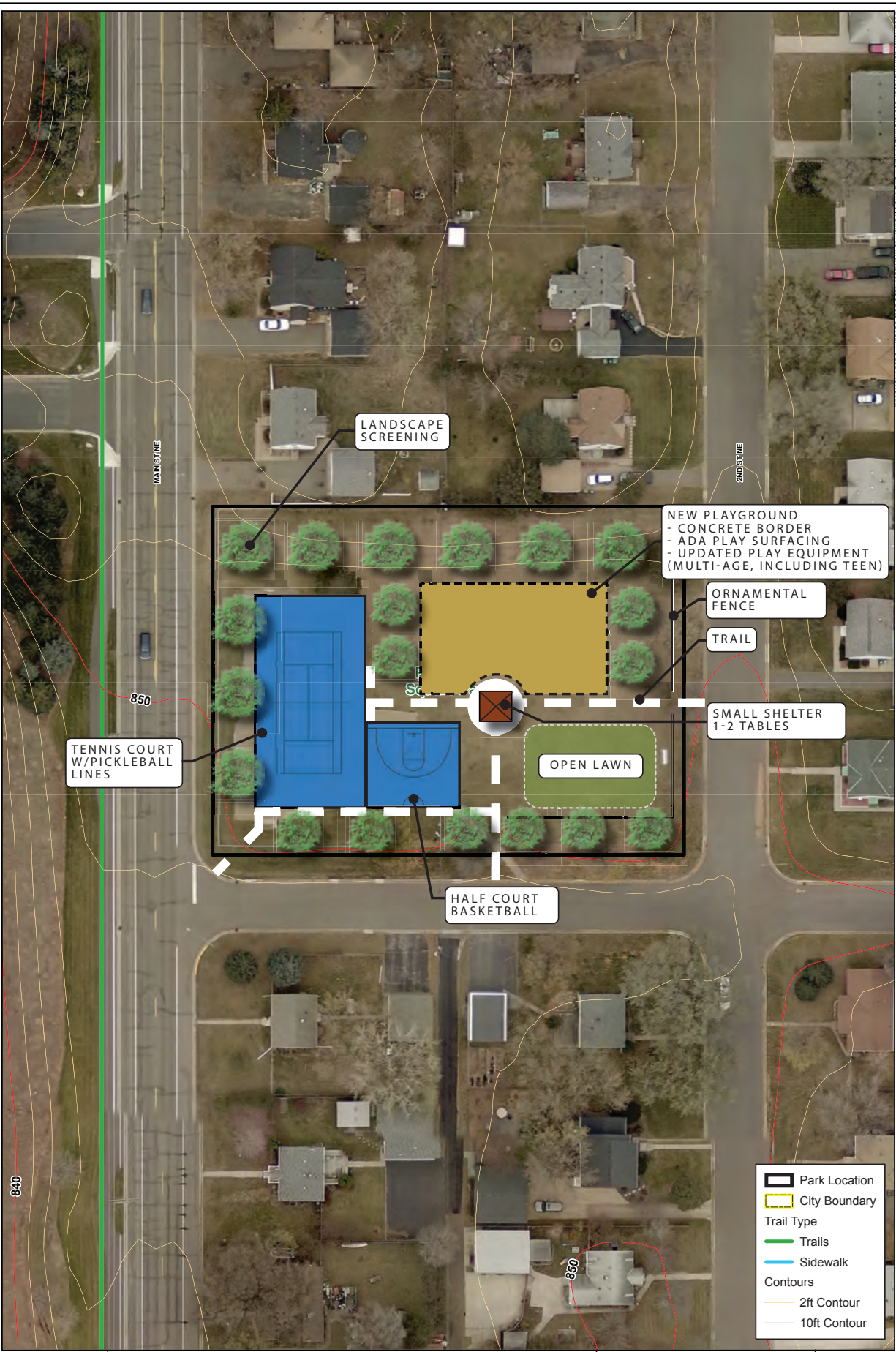


Plaza Park
Park Implementation Project
Fridley, MN

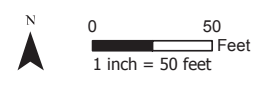


K:\016927-000\Graphics\016927 Park Concepts_Prefered

Downloaded from: K:\016927-000\Graphics\016927 Park Concepts_Prefered\016927 Plaza Park System_180221_10:15:24 AM



Plymouth Square Park
 Park Implementation Project
 Fridley, MN



Fridley Park System | Concept







Fridley, Minnesota
 January, 2021 | WSB Project number: 016927-000



K:\016927-000\Graphics\016927 Park Concepts_Prefered

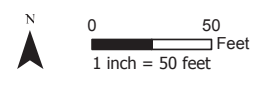
K:\016927-000\Graphics\016927 Park Concepts_Prefered



	Park Location
	City Boundary
Trail Type	
	Trails
	Sidewalk
Contours	
	2ft Contour
	10ft Contour



River Edge Way Park
 Park Implementation Project
 Fridley, MN



Fridley Park System | Concept

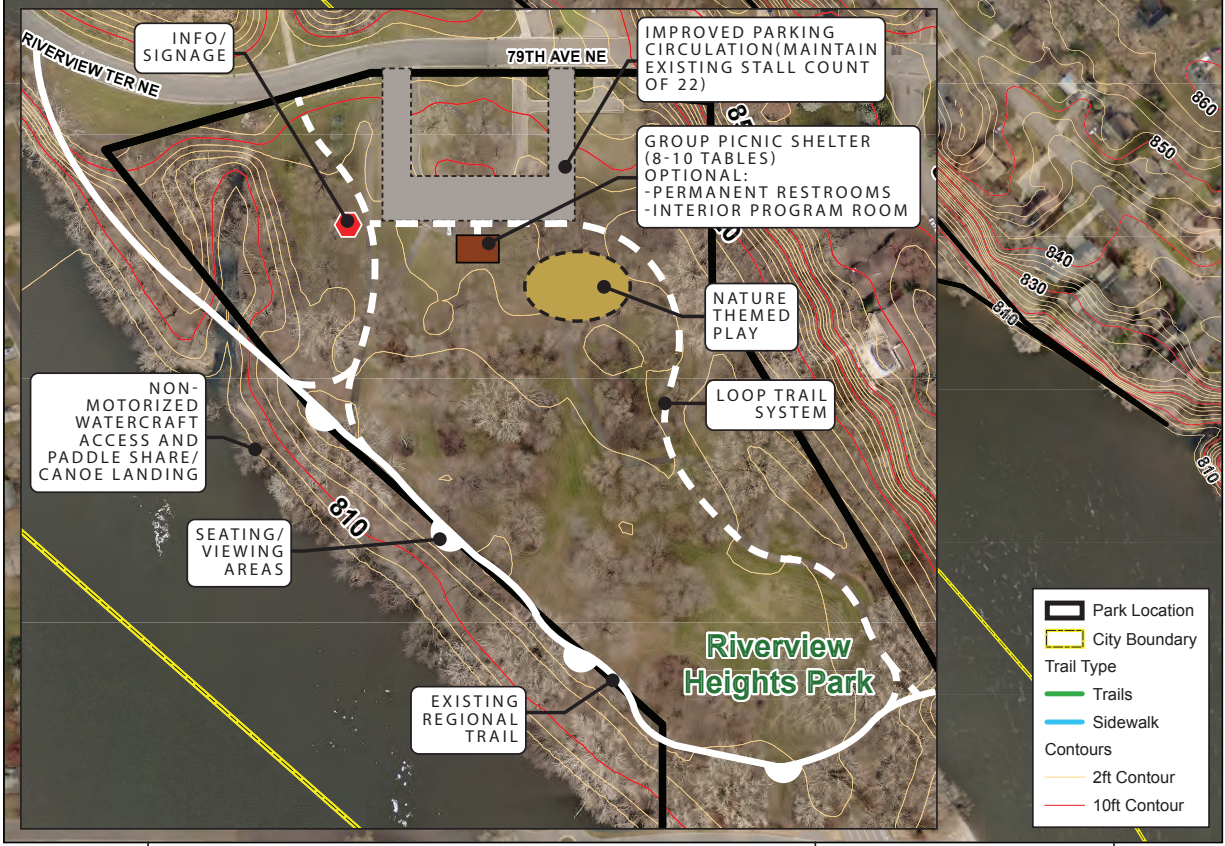
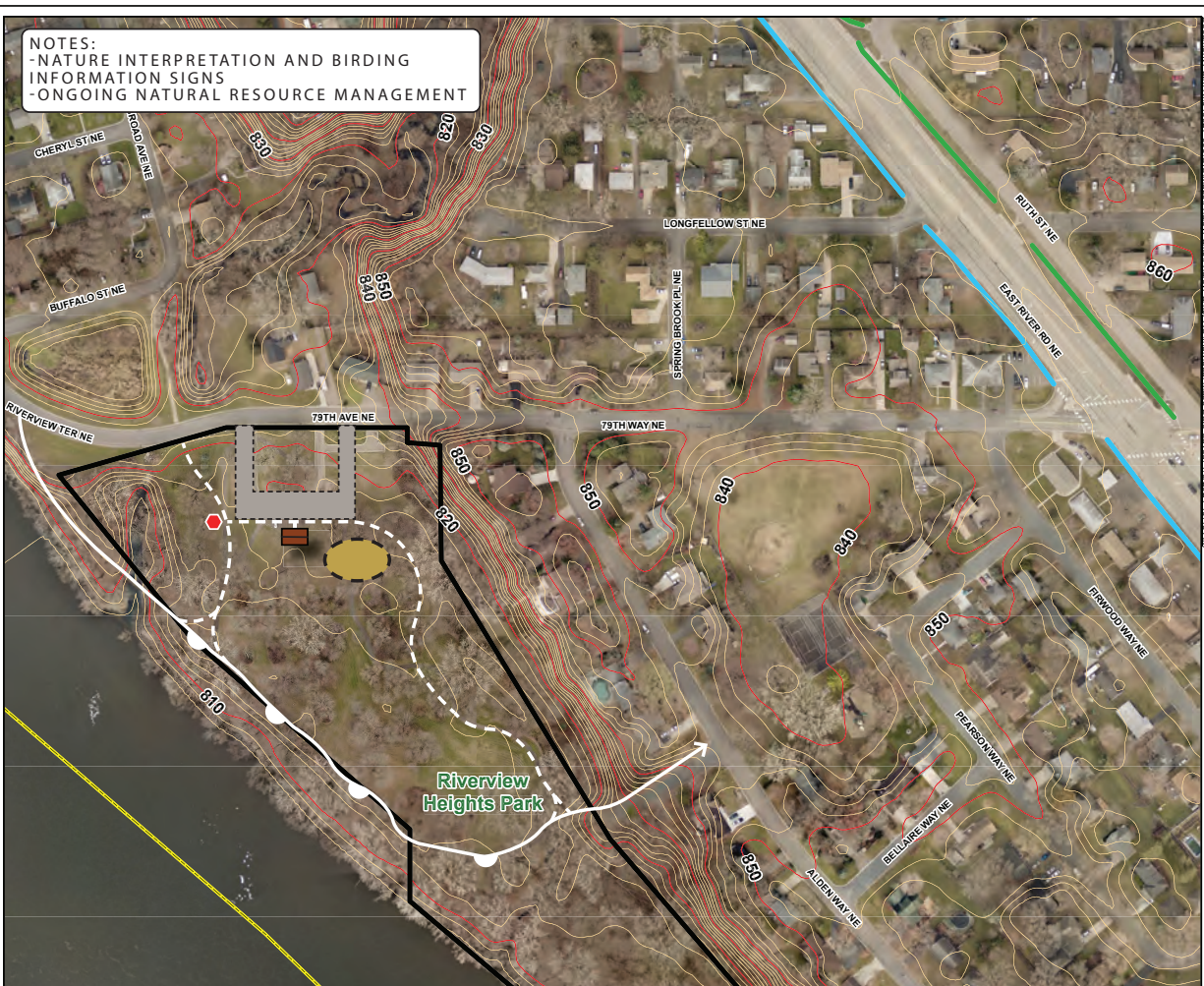
Fridley, Minnesota
 January, 2021 | WSB Project number: 016927-000



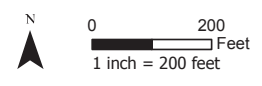
K:\016927-000\Graphics\016927 Park Concepts_Prefered

WSB Project Number: 016927-000, Project Name: River Edge Way Park, Date: 1/15/21, 10:15 AM

NOTES:
 - NATURE INTERPRETATION AND BIRDING INFORMATION SIGNS
 - ONGOING NATURAL RESOURCE MANAGEMENT



Riverview Heights Park
 Park Implementation Project
 Fridley, MN



Fridley Park System | Concept

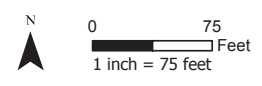
Fridley, Minnesota
 January, 2021 | WSB Project number: 016927-000



K:\016927-000\Graphics\016927 Park Concepts Preferred



Ruth Circle Park
Park Implementation Project
Fridley, MN

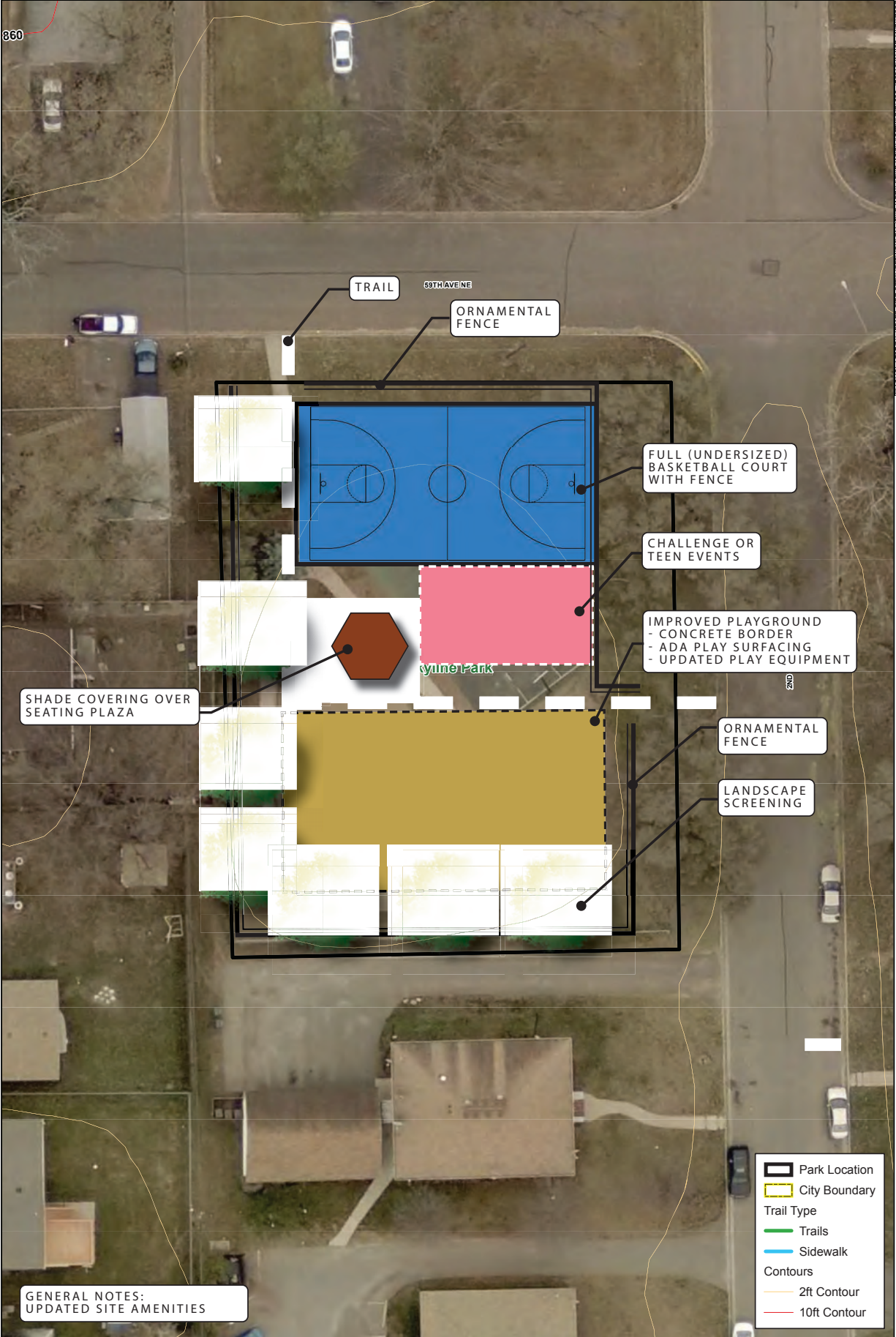


- Park Location
- City Boundary
- Trail Type**
- Trails
- Sidewalk
- Contours**
- 2ft Contour
- 10ft Contour

K:\016927-000\Graphics\016927 Park Concepts_Prefered

Downloaded from: K:\016927-000\Graphics\016927 Park Concepts_Prefered\016927 Park Concepts_Prefered\016927-000\016927-000.dwg, 1/20/21, 10:15:24 AM

860



SHADE COVERING OVER SEATING PLAZA

TRAIL

59TH AVENUE

ORNAMENTAL FENCE

FULL (UNDERSIZED) BASKETBALL COURT WITH FENCE

CHALLENGE OR TEEN EVENTS

IMPROVED PLAYGROUND
- CONCRETE BORDER
- ADA PLAY SURFACING
- UPDATED PLAY EQUIPMENT

2ND

ORNAMENTAL FENCE

LANDSCAPE SCREENING

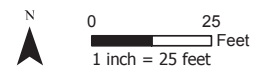
GENERAL NOTES:
UPDATED SITE AMENITIES

Legend

- Park Location
- City Boundary
- Trail Type**
- Trails
- Sidewalk
- Contours**
- 2ft Contour
- 10ft Contour



Skyline Park
Park Implementation Project
Fridley, MN



Fridley Park System | Concept

Fridley, Minnesota
January, 2021 | WSB Project number: 016927-000



K:\016927-000\Graphics\016927 Park Concept_Prefered

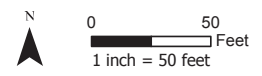
Document Path: K:\016927-000\Graphics\016927 Park Concept_Prefered\016927-000\016927-000.dwg

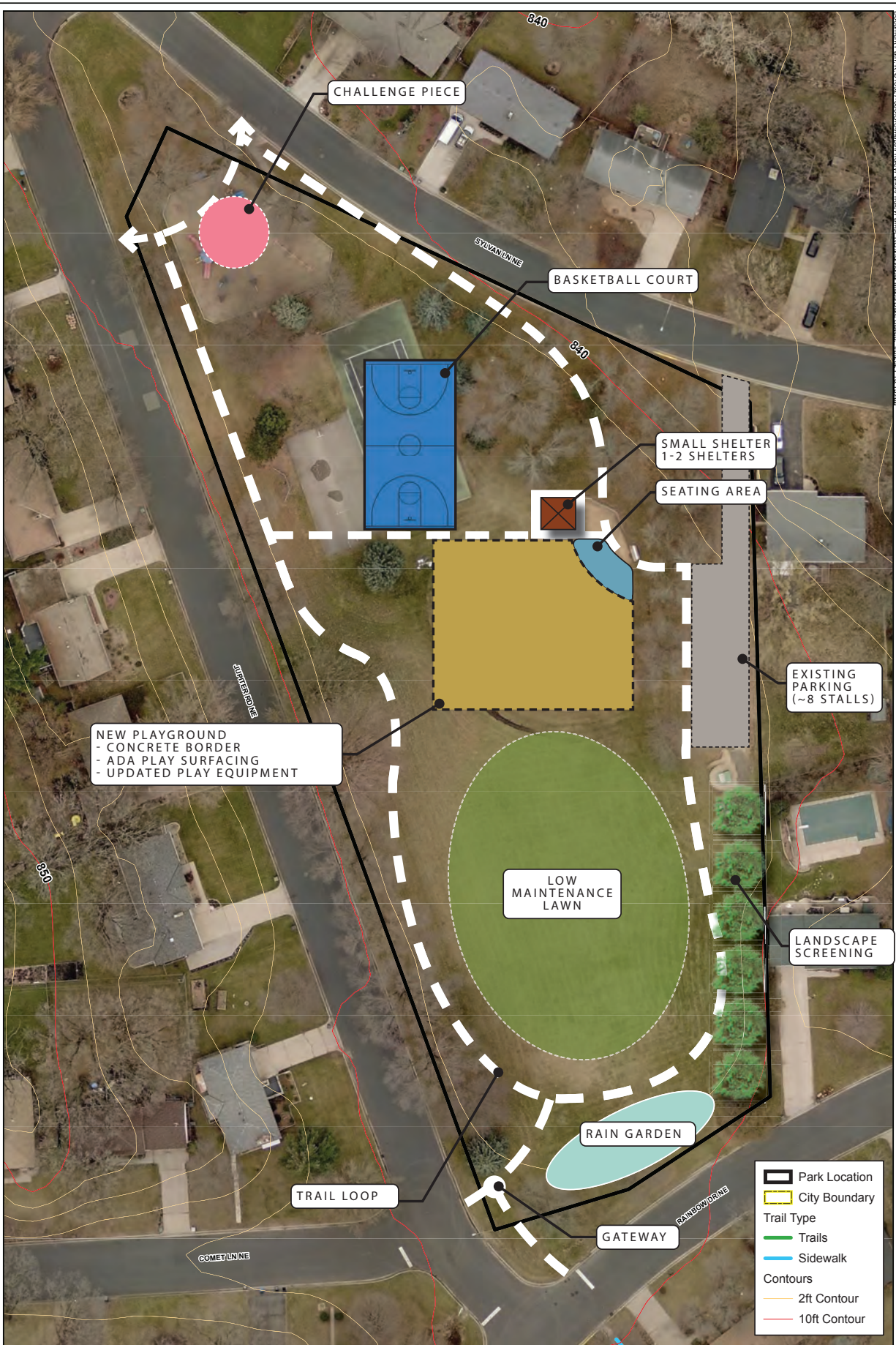


K:\016927-000\Graphics\016927 Park Concepts_Prefered

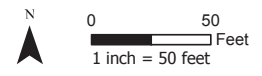


Summit Square Park
Park Implementation Project
Fridley, MN





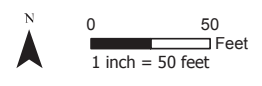
Sylvan Hills Park
 Park Implementation Project
 Fridley, MN



K:\016927-000\Graphics\016927 Park Concepts_Prefered



Terrace Park
Park Implementation Project
Fridley, MN



K:\016927-000\Graphics\016927 Park Concepts Preferred

Fridley Park System | Concept

Fridley, Minnesota
January, 2021 | WSB Project number: 016927-000

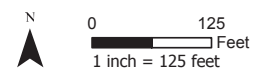




K:\016927-000\Graphics\016927 Park Concepts_Prefered
 01/27/2021 10:15 AM



West Moore Park
 Park Implementation Project
 Fridley, MN



Fridley Park System | Concept

Fridley, Minnesota
 January, 2021 | WSB Project number: 016927-000



K:\016927-000\Graphics\016927 Park Concepts_Prefered
 01/27/2021 10:15 AM

Draft Implementation Strategy - Approach #1

The following park improvement costs are categorized based on the needs analysis of the community for recommended improvements focused on balanced access to quality recreation. This provides a strategic guideline to address the highest needs of the community, as determined by priority, but does not identify actual phasing for implementation. Actual implementation and phasing will be established based on potential funding opportunities, available budgets and community needs at time of implementation.

Draft park priorities to meet community needs were made according to the following:

- Aging, poor or unsafe condition of park that needs to be addressed
- Park serves high number of residents or underserved populations
- Park is able to provide unique or destination experience
- Park is able to meet community-wide needs
- Park improvements would help balance recreation across the community

Park Service Area Priority

L = Low; general neighborhood; needs adequately met; good condition

M = Medium; serves one or more neighborhoods; needs basically met; fair condition

H = High; serves multiple neighborhoods; needs not met; poor condition

Park Priority	Park Name	Neighborhood #	Base Estimate	Alt / Future Estimate	High Priority 1-5 yrs	Medium Priority 5-10 yrs	Deferred Priority / Alt 10+ yrs	Comments
	Community Parks							
	Civic Center / Locke Play	14						Civic gathering space and new playground. On maintenance and replacement schedule w/ongoing investments.
M	Commons	28	\$11,171,930.00	\$3,539,830.00		\$11,171,930.00	\$3,539,830.00	Currently in fair to poor condition. Park provides a range of community wide athletics as well as general recreation needs to neighborhoods currently lacking a park within a half-mile, including multiple high density populations. Improvements would meet community-identified priorities with destination experiences.
M	Community	13a	\$4,916,310.00	\$896,000.00			\$5,812,310.00	Aging infrastructure; provides community-wide athletic needs mainly focused on baseball/softball. Improvements would balance athletic needs with added turf fields and improved access and circulation. Added types of recreation as neighborhood park for broader range of experiences.
H	Moore Lake	E	\$2,965,900.00	\$6,713,000.00	\$2,965,900.00		\$6,713,000.00	Currently in poor condition, is highly visible and provides a special use recreation draw with beach/water activities. Park also provides recreation to multiple neighborhoods currently lacking a park within a half-mile, including underserved populations. Improvements would meet community-identified priorities with destination experiences. Building unknown, deferred.
	Springbrook NC	1						Provides community wide recreation with focus on natural resources and program opportunities. Also serves adjacent high density development. Currently on a maintenance and replacement schedule w/yearly ongoing investments.
	Neighborhood / Special Use Parks							
L	Altura	35	\$127,870.60			\$127,870.60		Aging infrastructure; serves small neighborhood area. Improvements related to condition, accessibility and sustainability
M	Briardale	30	\$435,695.00	\$628,586.00		\$435,695.00	\$628,586.00	Aging infrastructure. Improvements related to condition, accessibility and sustainability
	Craig	4b	\$0.00					Aging infrastructure; water/drainage issues affects usability of site. This park serves a larger neighborhood area due to the size and types of recreation available.
M	Creekridge	21	\$318,142.50			\$318,142.50		Aging infrastructure. Improvement options from replacement of amenities or new layout for expanded recreation and improved function.
H	Creekview	15	\$388,765.00		\$388,765.00			Aging infrastructure; services immediate underserved populations and receives a high amount of use. Improvements to condition, accessibility and sustainability.
H	Ed Wilmes	22a	\$280,962.50		\$280,962.50			Aging infrastructure; serves large isolated neighborhoods including underserved populations in conjunction with school, private recreation amenities and natural resource based park along river. Improvements add recreation but is limited due to small park size.
H	Edgewater Gardens	16b	\$758,380.00	\$647,500.00	\$758,380.00		\$647,500.00	Aging infrastructure; serves multiple neighborhoods including underserved populations. Its location along a regional trail could increase its significance in terms of funding. Improvement options range from some layout modifications to completely new layout with enhanced recreation opportunities, including community gardens, improved condition, accessibility and sustainability.
L	Farr Lake	34b	\$119,718.75				\$119,718.75	Natural park around a pond located in a neighborhood lacking developed park amenities other than school sites. Improvements to provide added recreation however, trail easements are required and there are issues with making the site accessible due to steep slopes.

Park Priority	Park Name	Neighborhood #	Base Estimate	Alt / Future Estimate	High Priority 1-5 yrs	Medium Priority 5-10 yrs	Deferred Priority / Alt 10+ yrs	Comments
M	Flanery	8	\$1,042,790.00		\$1,042,790.00		\$0.00	Aging infrastructure; serves multiple & underserved neighborhoods. Options for redevelopment to improve condition, accessibility and recreation, option for community gardens.
M	Glencoe	2b	\$103,125.00			\$103,125.00		Mini park with aging infrastructure. New use focused on youth with a complementary design to proposed Springbrook (Glenbrook) improvements.
M	Hackmann Circle	32	\$332,500.00			\$332,500.00		Aging infrastructure. New layout for consideration that improves condition, accessibility, sustainability, and recreation.
L	Harris Lake	26	\$417,352.50			\$417,352.50		Aging infrastructure. New layout for consideration that improves condition, accessibility and highlights lake views.
M	Innsbruck NC	34a	\$407,820.00	\$282,100.00		\$407,820.00	\$282,100.00	Natural resource based park with trails. Improvements focused on condition, accessibility and sustainability. Potential acquisition option that would expand park function and programming capabilities.
M	Jay	17	\$179,630.00			\$179,630.00		Aging infrastructure. General improvements to condition, accessibility and sustainability.
M	Jubilee	36	\$252,093.75		\$252,093.75			New proposed use focused on meeting the needs of older youth replaces a duplicated playground in order to be complementary to nearby Oak Hill.
L	Locke Lake	16a	\$323,302.00				\$323,302.00	Consideration of alternative trail alignment in attempt to make the trail more accessible with improvements to enhance access to lake. May have significant site impacts. Due to regional trail significance, this project may be suitable for funding opportunities.
H	Logan	10	\$513,366.00	\$90,020.00	\$513,366.00		\$90,020.00	Aging infrastructure; serves neighborhoods with potential to serve adjacent neighborhoods currently lacking parks. Options for some layout revisions to full layout revision to improve condition, accessibility and sustainability with expanded recreation.
H	Madsen	5	\$4,095,350.00		\$4,095,350.00			Aging infrastructure; water/drainage issues affect usability of portions of site. Highly visible park that serves multiple neighborhoods including underserved populations. Improvements to function, condition, accessibility, sustainability, and includes expanded recreation with community-identified priorities.
L	Meadowlands	19	\$885,360.00			\$885,360.00		Aging infrastructure. New layout for consideration to improve condition, accessibility and sustainability.
M	Oak Hill	37	\$160,562.50			\$160,562.50		Aging infrastructure. Improvements to condition and accessibility with complementary design to proposed Jubilee improvements.
L	Plaza	13b	\$177,156.25				\$177,156.25	Aging infrastructure. Improvements to condition and accessibility.
M	Plymouth Square	40	\$438,100.00		\$438,100.00			Aging infrastructure, poor condition. Park located in far southern neighborhood. New layout to improve function, condition, and accessibility with added recreation.
L	Ray Thompson LL	B2	\$98,970.00			\$98,970.00		Addition of small playground. Desire for general ballfield improvements not included at this time due to greater accessibility issues at the site that need further review, which will likely affect the ballfields.
	Rivers Edge Way	22b						Undeveloped open space parcel along the Mississippi River; not accessible.
M	Riverview Heights	4a	\$804,090.00	\$1,138,901.40	\$804,090.00		\$1,138,901.40	Special use site with greater community appeal due to access to Mississippi River. Improvements focused on enhancing river access to meet community-identified priorities, site programming opportunities, and accessibility. Special uses, natural resources and location along the regional trail likely to contribute to funding opportunities. Develop more definitive master plan with community.
M	Ruth Circle	3	\$2,281,020.00	\$385,000.00	\$2,281,020.00		\$385,000.00	Aging infrastructure; serves isolated neighborhood and an additional high density neighborhood. Could potentially be considered a higher priority. New layout for consideration to improve function, condition, accessibility and sustainability.
H	Skyline	31	\$592,562.50		\$592,562.50			Mini park with aging infrastructure. Located in highest underserved neighborhood in city and may also be impacted by newer high density housing development. Improvements to function, condition, accessibility and expanded user groups with added recreation.
L	Springbrook/Glenbrook	2a	\$256,312.50			\$256,312.50		New use focused on adult recreation replaces existing playground for complementary design to proposed Glencoe improvements.

Park Priority	Park Name	Neighborhood #	Base Estimate	Alt / Future Estimate	High Priority 1-5 yrs	Medium Priority 5-10 yrs	Deferred Priority / Alt 10+ yrs	Comments
M	Summit Square	39	\$350,375.00			\$350,375.00		Aging infrastructure. Improvements to condition, accessibility and sustainability with enhanced connectivity of separated parcels.
H	Sylvan Hills	24	\$521,430.00		\$521,430.00			Aging infrastructure; water/drainage issues that affect some usability of site. Serves a large neighborhood including a high density area and may also serve additional underserved neighborhoods with improved awareness and connectivity. New layout with improvements to function, condition, accessibility and expanded recreation.
L	Terrace	18	\$404,500.00			\$404,500.00		Aging infrastructure. Improvements to condition, accessibility and accessibility.
L	W Moore Lake Sand Dunes	B1	\$1,027,670.00				\$1,027,670.00	Special use site with greater community appeal. Improvements focused on protection of natural resources with opportunities for educational programming and natural resource management and improved accessibility. Undertake community driven master plan process.
SubTotals:			\$37,149,112.35	\$14,320,937.40	\$14,934,809.75	\$15,650,145.60	\$20,885,094.40	

10-Year Priorities: \$30,584,955.35
 Deferred / Future Options: \$20,885,094.40
 * Grand Total: \$51,470,049.75

NOTE: Estimates are based on a high-level planning process and assume all work would be completed by a contractor through a public bid process. Estimates do not account for actual site conditions and other factors such as final design and programming, poor soil conditions, methods of construction, locations of utility connections, etc. but are intended to provide a budgetary figure for development that can be updated yearly. Estimates do not account for inflation, anticipated to range from 2-3% yearly.

Draft Implementation Strategy - Approach #2

The following park improvement costs are categorized based on the needs analysis of the community for recommended improvements focused on balanced access to quality recreation. This provides a strategic guideline to address the highest needs of the community, as determined by priority, but does not identify actual phasing for implementation. Actual implementation and phasing will be established based on potential funding opportunities, available budgets and community needs at time of implementation.

Draft park priorities to meet community needs were made according to the following:

- Aging, poor or unsafe condition of park that needs to be addressed
- Park serves high number of residents or underserved populations
- Park is able to provide unique or destination experience
- Park is able to meet community-wide needs
- Park improvements would help balance recreation across the community

Level of Development (Proposed Modifications):

L = Low; general neighborhood; needs adequately met; good condition

M = Medium; serves one or more neighborhoods; needs basically met; fair condition

H = High; serves multiple neighborhoods; needs not met; poor condition

Level of Development	Park Name	Neighborhood #	Base Estimate	Alt / Future Estimate	High Priority 1-5 yrs	Medium Priority 5-10 yrs	Deferred Priority / Alt 10+ yrs	Comments
Community Parks								
	Civic Center / Locke Play	14						Civic gathering space and new playground. On maintenance and replacement schedule w/ongoing investments
M	Commons	28	\$11,171,930.00	\$3,539,830.00	\$14,711,760.00			Currently in fair to poor condition. Park provides a range of community wide athletics as well as general recreation needs to neighborhoods currently lacking a park within a half-mile, including multiple high density populations. Improvements would meet community-identified priorities with destination experiences.
M	Community	13a	\$4,916,310.00	\$896,000.00		\$5,812,310.00		Aging infrastructure; provides community-wide athletic needs mainly focused on baseball/softball. Improvements would balance athletic needs with added turf fields and improved access and circulation. Added types of recreation as neighborhood park for broader range of experiences.
H	Moore Lake	E	\$2,965,900.00	\$6,713,000.00		\$1,482,950.00	\$8,195,950.00	Currently in poor condition, is highly visible and provides a special use recreation draw with beach/water activities. Park also provides recreation to multiple neighborhoods currently lacking a park within a half-mile, including underserved populations. Improvements would meet community-identified priorities with destination experiences. Minimal phased-in approach.
	Springbrook NC	1						Provides community wide recreation with focus on natural resources and program opportunities. Also serves adjacent high density development. Currently on a maintenance and replacement schedule w/regularly ongoing investments.
Neighborhood / Special Use Parks								
L	Altura	35	\$127,870.60				\$127,870.60	Aging infrastructure; serves small neighborhood area. Improvements related to condition, accessibility and sustainability.
M	Briardale	30	\$435,695.00	\$628,586.00			\$1,064,281.00	Aging infrastructure. Improvements related to condition, accessibility and sustainability.
	Craig	4b	\$0.00					Aging infrastructure; water/drainage issues affects usability of site. This park serves a larger neighborhood area due to the size and types of recreation available.
M	Creekridge	21	\$318,142.50				\$318,142.50	Aging infrastructure. Improvement options from replacement of amenities or new layout for expanded recreation and improved function.
H	Creekview	15	\$388,765.00			\$388,765.00		Aging infrastructure; services immediate underserved populations and receives a high amount of use. Improvements to condition, accessibility and sustainability.
H	Ed Wilmes	22a	\$280,962.50			\$280,962.50		Aging infrastructure; serves large isolated neighborhoods including underserved populations in conjunction with school, private recreation amenities and natural resource based park along river. Improvements add recreation but is limited due to small park size.
H	Edgewater Gardens	16b	\$758,380.00	\$647,500.00	\$758,380.00		\$647,500.00	Aging infrastructure; serves multiple neighborhoods including underserved populations. Its location along a regional trail could increase its significance in terms of funding. Improvement options range from some layout modifications to completely new layout with enhanced recreation opportunities, including community gardens, improved condition, accessibility and sustainability.
L	Farr Lake	34b	\$119,718.75				\$119,718.75	Natural park around a pond located in a neighborhood lacking developed park amenities other than school sites. Improvements to provide added recreation however, trail easements are required and there are issues with making the site accessible due to steep slopes.
M	Flanery	8	\$1,042,790.00			\$1,042,790.00	\$0.00	Aging infrastructure; serves multiple & underserved neighborhoods. Options for redevelopment to improve condition, accessibility and recreation, option for community gardens.
M	Glencoe	2b	\$103,125.00				\$103,125.00	Mini park with aging infrastructure. New use focused on youth with a complementary design to proposed Springbrook (Glenbrook) improvements.
M	Hackmann Circle	32	\$332,500.00				\$332,500.00	Aging infrastructure. New layout for consideration that improves condition, accessibility, sustainability, and recreation.

Level of Development	Park Name	Neighborhood #	Base Estimate	Alt / Future Estimate	High Priority 1-5 yrs	Medium Priority 5-10 yrs	Deferred Priority / Alt 10+ yrs	Comments
L	Harris Lake	26	\$417,352.50				\$417,352.50	Aging infrastructure. New layout for consideration that improves condition, accessibility and highlights lake views.
M	Innsbruck NC	34a	\$407,820.00	\$282,100.00			\$689,920.00	Natural resource based park with trails. Improvements focused on condition, accessibility and sustainability. Potential acquisition option that would expand park function and programming capabilities.
M	Jay	17	\$179,630.00				\$179,630.00	Aging infrastructure. General improvements to condition, accessibility and sustainability.
M	Jubilee	36	\$252,093.75			\$252,093.75		New proposed use focused on meeting the needs of older youth replaces a duplicated playground in order to be complementary to nearby Oak Hill.
L	Locke Lake	16a	\$323,302.00				\$323,302.00	Consideration of alternative trail alignment in attempt to make the trail more accessible with improvements to enhance access to lake. May have significant site impacts. Due to regional trail significance, this project may be suitable for funding opportunities.
H	Logan	10	\$513,366.00	\$90,020.00	\$513,366.00		\$90,020.00	Aging infrastructure; serves neighborhoods with potential to serve adjacent neighborhoods currently lacking parks. Options for some layout revisions to full layout revision to improve condition, accessibility and sustainability with expanded recreation.
H	Madsen	5	\$4,095,350.00			\$4,095,350.00		Aging infrastructure; water/drainage issues affect usability of portions of site. Highly visible park that serves multiple neighborhoods including underserved populations. Improvements to function, condition, accessibility, sustainability, and includes expanded recreation with community-identified priorities.
L	Meadowlands	19	\$885,360.00				\$885,360.00	Aging infrastructure. New layout for consideration to improve condition, accessibility and sustainability.
M	Oak Hill	37	\$160,562.50				\$160,562.50	Aging infrastructure. Improvements to condition and accessibility with complementary design to proposed Jubilee improvements.
L	Plaza	13b	\$177,156.25				\$177,156.25	Aging infrastructure. Improvements to condition and accessibility.
M	Plymouth Square	40	\$438,100.00		\$438,100.00			Aging infrastructure, poor condition. Park located in far southern neighborhood. New layout to improve function, condition, and accessibility with added recreation.
L	Ray Thompson LL	B2	\$98,970.00				\$98,970.00	Addition of small playground. Desire for general ballfield improvements not included at this time due to greater accessibility issues at the site that need further review, which will likely affect the ballfields.
	River Edge Way	22b						Undeveloped open space parcel along the Mississippi River; not accessible.
M	Riverview Heights	4a	\$804,090.00	\$1,138,901.40			\$1,942,991.40	Special use site with greater community appeal due to access to Mississippi River. Improvements focused on enhancing river access to meet community-identified priorities, site programming opportunities, and accessibility. Special uses, natural resources and location along the regional trail likely to contribute to funding opportunities. Develop more definitive master plan with community.
M	Ruth Circle	3	\$2,281,020.00	\$385,000.00		\$2,281,020.00	\$385,000.00	Aging infrastructure; serves isolated neighborhood and an additional high density neighborhood. Could potentially be considered a higher priority. New layout for consideration to improve function, condition, accessibility and sustainability.
H	Skyline	31	\$592,562.50		\$592,562.50			Mini park with aging infrastructure. Located in highest underserved neighborhood in city and may also be impacted by newer high density housing development. Improvements to function, condition, accessibility and expanded user groups with added recreation.
L	Springbrook/Glennbrook	2a	\$256,312.50				\$256,312.50	New use focused on adult recreation replaces existing playground for complementary design to proposed Glencoe improvements.
M	Summit Square	39	\$350,375.00				\$350,375.00	Aging infrastructure. Improvements to condition, accessibility and sustainability with enhanced connectivity of separated parcels.
H	Sylvan Hills	24	\$521,430.00		\$521,430.00			Aging infrastructure; water/drainage issues that affect some usability of site. Serves a large neighborhood including a high density area and may also serve additional underserved neighborhoods with improved awareness and connectivity. New layout with improvements to function, condition, accessibility and expanded recreation.
L	Terrace	18	\$404,500.00				\$404,500.00	Aging infrastructure. Improvements to condition, accessibility and accessibility.
L	W Moore Lake Sand Dunes	B1	\$1,027,670.00				\$1,027,670.00	Special use site with greater community appeal. Improvements focused on protection of natural resources with opportunities for educational programming and natural resource management and improved accessibility. Undertake community driven master plan process.
SubTotals:			\$37,149,112.35	\$14,320,937.40	\$17,535,598.50	\$15,636,241.25	\$18,298,210.00	

10-Year Priorities: \$33,171,839.75
Deferred / Future Options: \$18,298,210.00

Level of Development	Park Name	Neighborhood #	Base Estimate	Alt / Future Estimate	High Priority 1-5 yrs	Medium Priority 5-10 yrs	Deferred Priority / Alt 10+ yrs	Comments
----------------------	-----------	----------------	---------------	-----------------------	--------------------------	-----------------------------	------------------------------------	----------

* Grand Total: \$51,470,049.75

NOTE: Estimates are based on a high-level planning process and assume all work would be completed by a contractor through a public bid process. Estimates do not account for actual site conditions and other factors such as final design and programming, poor soil conditions, methods of construction, locations of utility connections, etc. but are intended to provide a budgetary figure for development that can be updated yearly. Estimates do not account for inflation, anticipated to range from 2-3% yearly.



PARK SYSTEM IMPROVEMENT PLAN REFINEMENT ADVISORY COMMITTEE

August 12, 2021

7:00 PM

Fridley City Hall, 7071 University Avenue N.E.

MINUTES

Members Present: Mike Heintz, Peter Borman, Dan Gourde, Don Whalen, Kim Farraro, Ken Schulz, Malcolm Mitchell, Liz Novotny, Jordan Hurst, Jim Stangler, Maija Sedzielarz

Members Absent: E.B. Graham, Traci Wuchter, Jeremy Powers

Others Present: Mike Maher, Community Services Director, Candace Amberg, WSB Landscape Architect, and Jeff Jensen, Operations Manager for Streets, Parks and Facilities

Mike Maher, Community Services Director, called the meeting to order at 7:03 p.m.

1. Welcome and Introductions

Mr. Maher welcomed those who were present.

2. Icebreaker Activity

Mr. Maher led the group in an introduction and icebreaker. He concluded the exercise by summarizing that this meeting will be to set the table for the group's future work. The group will discuss how to set expectations of how the group wants the decision-making process to be. He informed the members that these meetings are open to the public.

3. Review and Discuss Refinement Task Force Charter and City Council Resolution No. 2021-51, Directing Continued Efforts Pertaining to the Park System Improvement Plan

Mr. Maher reviewed feedback from the 2021 Town Hall Meeting where preliminary concepts were shared with the public. Responses from residents were considered and caused the City Council to adopt Resolution No. 2021-51, which was the Council's direction for staff to refine the Park System Improvement Plan (Plan). Resolution No. 2021-55 formally appointed members to two separate task forces. The Finance Advisory Committee will examine funding options for the Plan, and the Refinement Committee will examine concept plans to pare down the cost of the Plan to approximately \$30 million.

Mr. Maher reviewed the committee charter, which outlines the framework of the group's work, the format of the committee's meetings and the role of the committee in the overall Plan. He reiterated that this is an advisory committee tasked with making a recommendation, that will ultimately be decided upon by the City Council.

4. Park System Improvement Plan Background

Mr. Maher provided a brief history of the Fridley park system, reviewed current park conditions and introduced park improvement plan benefits. Mr. Maher recapped 2019 community workshops that identified the community's priorities of safe and connected parks for all, nature access, and quality facilities.

Committee members noted additional considerations should be including age groups included in plans, better wayfinding and signage, and flexibility in accommodating sporting trends.

Candace Amberg, WSB Landscape Architect, reviewed her firm's process in analyzing what the current park usages were and incorporated those sports into the Plan. Peter Borman commented that Community Park was built for softball and now is sitting vacant. Mr. Borman recommend consulting with sports associations to find out why they play where they do. Mr. Maher said the next meeting would be to review community parks. Ms. Amberg reported that she will consult with local sports associations to integrate their feedback, community survey results, and feedback from this meeting's discussions to refine concept plans.

Mr. Maher reconfirmed the group will get into discussions on specific parks and uses for each at later meetings.

Jim Stangler noted it would be nice to know what each park is currently being used for. Ms. Amberg replied that analysis will be integrated into future presentations to the group as concept plans change.

Mr. Maher asked the group to spend time reviewing each park concept. The group will discuss the three community parks: Commons, Community and Moore Lake, and approximately six of the neighborhood/special use parks to recommend changes. In subsequent meetings the group will decide what six parks they will work on. This process will help refine the priorities, which will impact the price.

Mike Heintz noted the Park and Recreation Commission's strong recommendation that there be no consideration of selling any park land within the City. Mr. Maher noted the consideration of selling park land is not being considered in the Plan.

Malcolm Mitchell asked if there were any criteria for review that the group should look at? Ms. Amberg replied that yes, the priority to understand system as a whole to identify particular populations and how the parks serve them, examine the barriers to park usage, age of the park, safety concerns, condition and accessibility of each park. Ms. Amberg discussed barriers to recreation in high-density, low-income and minority neighborhoods is a major component of analyzing the Plan. Those are the parks she really would encourage the group to focus on to make sure the most meaningful impact to the community is felt. The change needs to be noticeable so taxpayers understand what their tax dollars pay for. Ms. Amberg stressed the need to make a good and big impact for residents so they realize the good work being done and are supportive of additional improvements.

Kim Farraro asked how long it would take to pay for the Plan. Mr. Maher said it depends on the recommendation of the Finance Committee who is working on exploring different financing strategies. Mr. Mitchell thought working on financing strategies first does not make sense until the Plan is fully

established with a clear price tag. Mr. Maher informed the committee that most likely the primary source of funding will be bonding, but other avenues are being explored. This group is tasked with paring down to the current proposal from \$50 million to \$30 million at direction of the City Council.

Mr. Heintz added the City has a good track record with how it financed the Springbrook Nature Center building through bonding. Mr. Maher added that if the group would like to learn more about the financing options, he would request the City's Finance Director come to speak with the committee.

Ms. Amberg noted this is an exercise to prioritize top parks to work on. There will be projects that will move down the priority list and that will decrease the cost. She asked the committee to look at broad picture to make sure the whole community is served.

Mr. Mitchell asked if the \$50 million price was based on high-estimate price for each concept plan in the binder. Ms. Amberg affirmed. Ms. Farraro asked if there a price list for each item at each park? Ms. Amberg affirmed and noted that as the group works through feedback, they can decide what items to remove, which will decrease the overall cost.

Ms. Amberg reviewed the park service area analysis in the committee's binders.

Mr. Mitchell asked what features are most desired by diverse groups. Ms. Amberg recommended the committee consider age. Typically, City parks accommodate younger children, and teens are often not considered when new equipment is installed. Also, how can we get parents involved to enjoy the park alongside their children or grandchildren.

Mr. Heintz added shelter buildings are appealing for diverse groups who use those facilities for family/community gatherings. It is a good way to serve those who may not have their own yard space. Mr. Maher noted these discussions will be a big part of this group's work.

Jeff Jensen, Operations Manager for Streets, Parks and Facilities stressed the important work of this group to analyze and determine where are high-need areas are. There will be some conflict. The group must weigh all aspects and prioritize the work to be done, and not every group will be satisfied. The committee's task is to discuss and debate so the City may attempt to best serve all groups. He added that the City needs to create a Plan that will provoke a response from residents to the Plan, and this committee is tasked with finding a way to wisely pare down the initial proposal.

Mr. Borman asked if the committee should take into consideration the added burden to the City of staff hours and maintenance. Mr. Jensen answered, not at this phase. The operational cost has already been considered. Those costs will be absorbed by the City and is a past practice of the Council.

Mr. Maher informed the committee that first thing they will be asked to consider are the three community parks. He asked the group to visit each one and envision the space with the proposed changes to visualize the concepts. This will allow each member to best be prepared to analyze each proposal, and to recommend changes.

5. Task Force Meeting Agreements

Mr. Maher led the group through a discussion to understand and agree on how the group will interact with each other.

Mr. Borman asked how long the meetings go on, and what was the ultimate goal. Mr. Maher replied that he has scheduled meetings until the end of 2021. He is open to what the group thinks for how long they would want to meet. Don Whalen added that the first two meetings will tell the group a lot once they begin getting into details. Ms. Amberg added the next meeting will be to discuss high-level items first, and subsequent meetings will do a deeper examination into particular parks. Mr. Maher reminded the group that their suggestions will go to Ms. Amberg who will then bring back a revised Plan for the group to review.

Mr. Mithcell suggested the meetings be set for 90 minutes with the flexibility to go longer, but not more than two hours. The group collectively agreed.

Mr. Mitchell noted its ok to have a disagreement. Maija Sedzielarz added the committee members should assume positive intent and be willing to listen to other people's perspective.

Mr. Maher confirmed that all members will have an equal voice in the process and committee meetings. The committee's meetings will be public meetings and members of the public are encouraged to attend.

Mr. Maher reminded the group that this is a refinement process where the three community parks will be examined first, followed up by six neighborhood parks. The committee will work toward an end recommendation that the City Council will consider.

Mr. Jensen added that this could be a ten-year plan. Part of the process with any park plan is community input to begin designing a concept. This group will work to take those park concepts, consider feedback from the community and planning experts to come to a more defined and clearer concept. Then ultimately, present the refined Plan to the community for their buy-in.

Ms. Amberg offered to provide guidance through her expertise, but will not make any decisions for the group.

Mr. Stangler asked why the City is not asking for the full \$50 million concept. Ms. Amberg answered that based on community feedback in the resident survey, there was a set dollar amount residents were willing to pay for a Plan. Mr. Maher confirmed that the City Council decided on the \$30 million price based on the resident survey.

Ms. Farraro asked if the group was aware of increasing taxes from the school districts and the County. Mr. Maher explained that the City typically uses eight other cities as comparisons for percentage of property taxes. Fridley is usually in the middle of that list. He noted that adding a \$30 million bond would increase property taxes but not significantly compared to other cities. Ms. Farraro added that a tax increase would compete with another increase from the school district, and may not be supported. Mr. Maher acknowledged it will be hard to separate the finance conversation from the work of this committee, but that is the work of the finance committee.

6. Review and Confirm Future Meeting Schedule

Mr. Maher presented proposed meeting dates for the remainder of 2021: September 9, October 14, November 10, and December 9. For each meeting an agenda along with the previous meeting's minutes will be sent.

Jordan Hurst asked for confirmation of what the committee should do for the next meeting. Mr. Heintz answered to take the binder to the community parks and visualize the Plan and come to the meeting to discuss.

Mr. Maher thanked the committee for attending this evening's meeting.

The meeting adjourned at 9:00 p.m.

Respectfully submitted,
Melissa Moore, Administrative Services Coordinator/Deputy City Clerk



PARK SYSTEM IMPROVEMENT PLAN REFINEMENT ADVISORY COMMITTEE

September 09, 2021

7:00 PM

Fridley City Hall, 7071 University Avenue N.E.

AGENDA

Present: Mike Heintz, Traci Wuchter, Dan Gourde, Don Whalen, Kim Ferraro, Malcolm Mitchell, Jordan Hurst, Jeremy Powers, Pete Borman, Jim Stangler

Absent: E.B. Graham, Liz Novotny, Ken Schultz, Maija Sedzielarz

Others Present: Alyssa Kruzel, Community Engagement Specialist, Jeff Jensen, Operations Manager for Streets, Parks and Facilities, Candace Amberg, WSB Landscape Architect, Mike Maher, Community Services Director, David Ostwald, City Councilmember, Melissa Moore, City Clerk, Anna Disco, Nick Skochinsky

Mike Maher, Community Services Director, called the meeting to order at 7:01 p.m.

REVIEW OF MINUTES

1. Meeting Minutes of August 12, 2021 Refinement Advisory Committee Meeting

Mr. Mitchell informed the group that the bonding for Springbrook did not from the City, but from the State. Ms. Moore agreed to revise the minutes to reflect the correction.

ITEMS FOR DISCUSSION

2. Community Park Plans Review and Discussion

Mr. Maher reviewed the Committee's agreements for meeting decorum established at the August 12, 2021 meeting and reminded the group they were to go out and review the plans for the three community parks.

Ms. Amberg directed the group to page 17 of the agenda regarding the concept plan for Moore Lake Park. The plan the group will review today was developed from WSB's research and direction from the City gained from the resident survey. Moore Lake is a highly visible park and referred to as a "community gem" from the resident survey. Residents ranked the community parks as what was most important. Moore Lake ranked first.

Ms. Amberg stated the current proposed plan improves parking areas, adding a dog park area, creating a flexible open lawn space, improve existing volleyball space, adding a new group picnic shelter and picnic lawn, larger playground spaces, new beach pavilion and lakeside plaza. This plan does shrink down the

beach area, to accommodate other water activities than swimming, such as canoes and paddleboards, a lakeside boardwalk, improvements to existing docks and improvements to the lake's water quality. The plan does remove the tennis and basketball courts. If residents wanted to play tennis, there are nearby courts at Totino Grace and Briardale Park. And anyone wishing to play basketball could visit Briardale Park and Hackman Circle.

Mr. Heintz noted Moore lake is closed to swimming due to water quality. Mr. Mitchell asked for an update on the water quality. Mr. Jensen answered the City received a grant from the Rice Creek Watershed District to install an enhanced sand iron filter system, and is treating the water for phosphorous levels. There are issues with e-coli, due to geese, which is heavily dependent on the water levels. Mr. Jensen informed the group that to fix the water will be a 50+ year project. The water is relatively clean, but has floating debris in it, so its mainly an appearance issue. The City continues regular testing and is researching different filtration solutions.

Mr. Powers asked if plant filters could be placed to assist. Mr. Jensen answered that plant buffer zones are great to help with water quality, and is a part of the plan for Moore Lake.

Mr. Stangler asked if there was a cost breakdown by amenity. He asked if the City considered Moore Lake as a location for the splashpad. Ms. Amberg noted there is some amenity cost breakdown in the committee's information.

Mr. Mitchell asked if it would be possible to connect both sides of the lake under Highway 65. Mr. Jensen said that would be up to the State and would be extremely expensive.

Ms. Disco commented that if there was something there to draw people to the lake, such as a splashpad, since the water quality keeps people away.

Mr. Heintz would like to see an emphasis on park shelter spaces. The group agreed the park currently gets a lot of use for gatherings. Ms. Amberg asked the group for feedback on the shelter areas. Ms. Wuchter added these would be needed especially if there's a splashpad. The group agreed.

Mr. Gourde commented he felt the dog park area was not necessary because of a larger County-owned dog park nearby. The group agreed.

Ms. Amberg asked the group if they approved of about the baseball fields being repurposed. The group agreed.

Ms. Amberg asked the group for feedback on removal of the tennis courts. The group agreed on the plan to remove them for more green space. Mr. Gourde noted Commons Park has tennis space.

Mr. Mitchell suggested a basketball half court be added. The group agreed.

Ms. Amberg asked the group for feedback on the play spaces. The group expressed approval of the proposed area.

Ms. Amberg asked the group for feedback on the boardwalk or trails. Mr. Mitchell said there should be a loop. Mr. Jensen said the trail through the swamp to the north would need to be a boardwalk.

Mr. Heintz asked about stationary exercise equipment and bike repair stations. Ms. Amberg replied those amenities are in the Commons Park plan.

Mr. Mitchell asked if alternative energy solutions were considered. Ms. Amberg said those are considerations for discussions at a later stage. Mr. Jensen noted the City is testing solar lights at the park to the east of City Hall.

Mr. Hurst noted his desire to include food stations for guests to the park. The group agreed that would be an option for future consideration.

Ms. Amberg opened a discussion on Community Park. This park was ranked third in the resident survey. The plan includes new walking trails, creating new flexible spaces and improving existing athletic fields. The proposed plan includes new turf fields, a new parking area, new playground, interactive sport court, edible orchard, demonstration gardens, and resizing one of the fields to youth ball sports.

Mr. Heintz expressed concern that this proposed plan does not accommodate baseball. The group discussed various layout options. Mr. Stangler suggested turf fields.

Mr. Miller noted this park should be more coordinated with the Civic Campus. Mr. Jensen noted the City's leadership eventually wants to see a connection with the Civic Campus with Community Park, via an overpass.

Ms. Amberg opened a discussion on Commons Park. This park was ranked second in the resident survey. Two ball fields are proposed to be removed for flexible space. Ms. Ferraro noted the ball fields are used heavily by kids who walk directly from the Middle School. Mr. Stangler and Mr. Heintz expressed concern that baseball players age 12-16 do not currently have ballfields that accommodate the size fields they require. Mr. Powers asked if a needs assessment was done for ball fields. Mr. Jensen asked if different ages could play on the same fields but have some sort of movable mound. Mr. Stangler said field one at Community is the only field that meets the 75-foot baseline requirement for baseball. Mr. Powers recommended feedback is needed from the local associations to assess the needs. Ms. Farraro said if a baseball field was removed from Community, the 12–16-year-old kids would not have a field to play on. Ms. Amberg will consult with the City and baseball associations to alter her proposals for baseball fields among the community parks.

Ms. Amberg noted the plan's winter recreation activity area. The group supported the idea and expressed a strong desire to not decrease the size of the sledding hill.

Mr. Stangler asked why the hockey rink needs to move. Mr. Jensen said the biggest feedback from the survey was for warming houses and restrooms for public use.

Mr. Jensen added the City is extremely short on soccer fields. Mr. Mitchell asked if there are projections on needs for soccer, and other sports. Ms. Amberg said it depends on each community.

Ms. Amberg asked the group for their desire to keep the splashpad and pavilion. The group agreed.

3. Review Next Steps and Future Meeting Dates

Mr. Maher asked Ms. Amberg if she could have alternative plans for the next meeting. She said she would have a line drawing concept plan generated from this evening's discussion for the October 14 meeting.

Mr. Mitchell asked if there was information on changing demographics of neighborhoods. Ms. Amberg answered they do have demographic assessments and needs assessments. She plans to review as many neighborhood parks as the group can work through.

Mr. Maher reminded the group the next meeting dates are October 14 and November 10. The best preparation committee members can do is to review the proposed park plans in the neighborhood plans, and review the public's comments.

The meeting adjourned at 9:09 p.m.

Respectfully submitted,
Melissa Moore, City Clerk



PARK SYSTEM IMPROVEMENT PLAN REFINEMENT ADVISORY COMMITTEE

October 14, 2021

7:00 PM

Fridley City Hall, 7071 University Avenue N.E.

AGENDA

Present: Kim Ferraro, Mike Heintz, Dan Gourde, Traci Wuchter, Maija Sedzielarz, Ken Schultz, Don Whalen, E.B. Graham, Malcolm Mitchell, Jordan Hurst, Liz Novotny

Absent: Jim Stangler, Jeremy Powers, Peter Borman

Others Present: Jeff Jensen, Operations Manager for Streets, Parks and Facilities, Candace Amberg, WSB Landscape Architect, Mike Maher, Community Services Director, Melissa Moore, City Clerk

Mike Maher, Community Services Director, called the meeting to order at 7:03 p.m.

REVIEW OF MINUTES

1. Meeting Minutes of September 9, 2021 Refinement Advisory Committee Meeting

There were no revisions to the minutes.

ITEMS FOR DISCUSSION

2. Neighborhood Park Concept Plan Review and Discussion

Ms. Amberg reviewed the feedback and process the committee engaged in at the September 9 meeting. She worked to take the Committee's feedback to alter certain park plan proposals. There was no recalculation of prices based on the group's last meeting. Itemized cost lists will be provided after priorities are established. At this time the Committee is working to refine concept plans for the City - a vision of where the City will go. At a later date the City would check back in with residents through targeted outreach events on particular park plans.

Mr. Maher reminded the Committee they have been asked to come up with a plan that can be implemented over a 10-year period. As the years go on and the City is ready to work on certain parks, the City will check in with surrounding neighborhoods by doing targeted outreach. At that time specific plans for parks will occur, such as what kind of play equipment would be put in a park or changing a tennis court to a pickleball court.

Ms. Amberg led the group through altered proposed plans for each park. The changes included are:

- Altura Park: improved ADA accessibility, concrete surround of the playground;

- Briardale Park: picnic shelter is large enough for 4-6 tables, and could add a permanent bathroom at a later date, moved the pollinator garden;
- Creek View Park: expanded parking was removed;
- Creekridge Park: ballfield area was kept, modified the plan to expand the playground, removed parking space, bring existing trail out to Mississippi Street;
- Ed Wilmes Park: pollinator garden changed to an ornamental garden; readjusted border of the playground to accommodate half-court basketball space;
- Edgewater Gardens Park: two open lawns at ends of the park, expanded playground, picnic shelter with permanent restroom, added tennis court and moved community garden, fewer parallel parking spaces;
- Locke Lake Park: the committee recommended the removal of the kayak/canoe storage;
- Farr Lake Park: the committee recommended the removal of the dock due to continuous low water levels and playground was removed;
- Flannery Park: smaller parking lot, new playground to connect with existing shelter, added teen challenge area, moved the basketball court;
- Glencoe Park: improved full-size basketball court; added teen challenge area;
- Hackman Circle: put basketball court back into the plan, moved playground, removed trail loop and small picnic shelter;
- Harris Lake Park: downsize parking lot, added bike rack and kiosk;
- Innsbruck Nature Center: no changes;
- Jay Park: stretch out half-court basketball court;
- Jubilee Park: basketball court will have shortened-height hoop;
- Little League: added playground;
- Logan Park: ballfield improvements; expanded playground, reconstructed tennis court, optional trail loop with fitness challenge zones;
- Madsen Park: trail crossing changed, moved parking lot;
- Meadowlands Park: reduced parking, more wayfinding;
- Oak Hill Park: no changes;
- Plaza Park: removed parking stalls;
- Plymouth Square Park: no changes;
- River Edge Way Park: no changes;
- Riverview Heights: modifying one loop trail, widen configuration of parking lot, group picnic shelter with permanent restrooms, possible fishing area;
- Ruth Circle Park: no changes;
- Skyline Park: reconfigured layout;
- Springbrook Park: added improved existing playground and a small shelter;
- Summit Square Park: low maintenance lawn instead of pollinator garden;
- Sylvan Hills Park: remove tennis court and put in full size basketball court;
- Terrace Park: no changes; and
- West Moore Lake Park; no changes.

3. Community Park Concept Plan Review and Discussion

Ms. Amberg described the two concept plans for Community Park. Concept 1 includes three ball fields that were kept, but reoriented, championship field would be multi-purpose, parking lot was removed to accommodate multi-use attractions, improved concessions plaza. Concept 2 changes include expanded playground, multi-purpose athletic field, expanded parking lot.

Ms. Amberg described the two concept plans for Commons Park. Concept 1 expands parking, keeps primary shelter and splashpad, keeps baseball field, removes the softball field, moves the ice rink to the east, removes tennis courts. Concept 2 moves the softball field, ice rink stays where it is, expanded parking and volleyball court, removing tennis court. Concept 3 keeps the baseball field, removes the softball field, moves the ice rink, removes the tennis courts and changes to the volleyball court.

Ms. Amberg described the two concept plans for Moore Lake Park. Concept 1 removes the dog park and boardwalk, and adds a multi-use court space. Concept 2 moves the paddle sport rental space, enlarges beach space, and adds natural playground on the north end.

4. Review Next Steps and Future Meeting Dates

Mr. Maher reminded the Committee of the next meeting dates of November 10 and December 9, 2021.

ADJOURN 9:05 p.m.



PARK SYSTEM IMPROVEMENT PLAN REFINEMENT ADVISORY COMMITTEE

November 10, 2021

7:00 PM

Fridley City Hall, 7071 University Avenue N.E.

MINUTES

Present: Kim Ferraro, Dan Gourde, Traci Wuchter, Maija Sedzielarz, Ken Schultz, Don Whalen, E.B. Graham, Malcolm Mitchell, Jim Stangler, Jeremy Powers, Liz Novotny, Mike Heintz

Absent: Peter Borman, Jordan Hurst

Others Present: Candace Amberg, WSB Landscape Architect
Mike Maher, Community Services Director
Melissa Moore, City Clerk
Stephen Keeler, Fridley Public Schools
Maurice Roberge, Resident

Mike Maher, Community Services Director, called the meeting to order at 7:05 p.m.

REVIEW OF MINUTES

1. Meeting Minutes of October 14, 2021 Refinement Advisory Committee Meeting

There were no revisions to the minutes.

ITEMS FOR DISCUSSION

Mr. Maher recognized guests in attendance. Mr. Roberge addressed the Committee on his request for dedicated pickle ball courts versus adapting tennis courts.

Mr. Powers asked staff for an index of space offerings City-wide at the next meeting. A list that would spell out each activity, and where they have dedicated space throughout the City.

Mr. Keeler addressed the Committee regarding a possible City/School District collaboration to enhance the project overall. The group discussed the property surrounding Fridley High School and Fridley Middle School. Mr. Keeler will liaison with the City.

2. Community Park Concept Plan Review and Discussion

Ms. Amberg reviewed the Committee's previous discussion on Community Park from the October meeting. Site Concept 1 includes the following changes: combines all parking into one lot, removed one ball field, creates neighborhood park amenities in previous parking space, removed fencing from west ball fields to allow for multi-use fields and soccer field, improved and relocated shelter, and future plans for pedestrian bridge to connect the Civic Campus.

The Committee expressed concern with removing fencing on the west ball fields. Ms. Amberg will put the fences back in and decrease the size of soccer fields.

Ms. Novotny shared her desire to see public art from Fridley artists in the community parks.

Site Concept 2 includes the following changes: existing north parking remains, expands south parking, northwest softball field is changed to a multi-purpose athletic field, added playground and picnic and mixed amenities area around a central shelter.

Ms. Farraro noted only having two fields, and smaller soccer fields, will not draw tournaments. Therefore, a concession stand would not be needed.

Ms. Amberg confirmed consensus for the parking set up of Site Concept 2.

Ms. Amberg opened the discussion of Commons Park Site Concept Plan 1. Changes include improved baseball fields, removed softball field, added parking lots, splashpad and playground, removed tennis courts for multi-game court, new concessions and restrooms, relocated hockey rink. The group agreed the location of the warming house, away from the hockey rink, does not make sense. The group agreed the multi-game court should be a dedicated pickleball court.

Ms. Amberg opened the discussion of Commons Park Site Concept Plan 2. Changes include creating new parking lot, moved softball field, expanded volleyball courts, multi-use facility at the base of the sledding hill, readjusted south parking lot. The group agreed the softball field is not needed and should be removed for open athletic space for soccer.

Ms. Amberg opened the discussion of Commons Park Site Concept Plan 3. Changes include moving the hockey rink, tennis courts removed for parking, softball field removed for open athletic space, adding volleyball courts.

The Committee consulted with Mr. Keeler on the School District's use of tennis courts.

Ms. Amberg confirmed the group's preference for Concept Plan 3 with a dedicated pickleball court.

Ms. Amberg opened the discussion of Moore Lake Park Site Concept Plan 1. She noted the Rice Creek Watershed District redrew flood maps, which will have significant impacts on the park's concept plans. The new plan will need to ensure any structures are waterproof and above the required flood elevation. She updated the group that changes are in progress to refine the roundabout, which would impact access to the park. Changes to the concept include improved parking space, multi-use game court, natural playground and picnic space, removed the splashpad.

Moore Lake Park Site Concept Plan 2 includes removing smaller shelters and constructing one large shelter, one large playground, larger beach area and removed boardwalk. The group discussed potential for paddleboard rental options.

Ms. Amberg asked the group if they'd like to keep tennis and/or pickleball courts at this park or rely on other parks for those activities. The group agreed the park should include at least a half-court basketball court

3. Review Next Steps and Future Meeting Dates

Ms. Amberg informed the group that she will come to the next meeting with an updated priorities spreadsheet, updated cost spreadsheets, and further revised concept plans. Mr. Maher updated the group that the Financing Committee is close to finalizing their recommendation to the City Council on the financing vehicles for a ten-year implementation period. This group's meeting in December will be to further refine the community park recommendation. Each community park and each neighborhood park will have a proposed final concept for the group to consider. With feedback from that meeting, staff will finalize a formal recommendation for the group to approve at a January meeting.

The meeting adjourned at 9:00 p.m.



PARK SYSTEM IMPROVEMENT PLAN REFINEMENT ADVISORY COMMITTEE

December 09, 2021

7:00 PM

Fridley City Hall, 7071 University Avenue N.E.

MINUTES

Present: Peter Borman, Mike Heintz, Dan Gourde, Maija Sedzielarz, Malcolm Mitchell, Jeremy Powers, Jordan Hurst, Traci Wuchter, Jim Stangler, E.B. Graham, Ken Schultz,

Absent: Don Whalen, Liz Novotny, Kim Ferraro

Others Present: Candace Amberg, WSB Landscape Architect
Mike Maher, Community Services Director
Jeff Jensen, Operations Manager for Streets, Parks and Facilities
Melissa Moore, City Clerk

Mike Maher, Community Services Director, called the meeting to order at 7:02 p.m.

REVIEW OF MINUTES

1. Meeting Minutes of November 10, 2021 Refinement Advisory Committee Meeting

There were no revisions to the minutes.

ITEMS FOR DISCUSSION

2. Preferred Community Park Concept Plan Review and Discussion

Ms. Amberg noted the exhibits in the agenda are concepts. She will review them with the group and solicit their feedback for further revisions.

Ms. Amberg described the updated proposal to Commons Park. The committee expressed support for the proposed plan, and shared hopes the Fridley School District (District) would be supportive of an agreement to implement the proposed plan. Mr. Maher met with Stephen Keeler from the District who expressed generalized support for the City's initiative to improve the area, and would be open to discussing plan details.

Ms. Amberg described the updated proposal to Community Park. Mr. Mitchell asked for more data on what trends are in recreation. Ms. Amberg said it varies community to community, and changes over time. This plan creates flexibility and allows for future changes if needed.

Ms. Amberg described the updated proposal to Moore Lake Park. Mr. Maher notified the group that the City was recently notified that the entire area was newly designated as a flood zone by the Minnesota Department of Natural Resources (DNR), so the original plan for the park must be significantly pulled back. The new flood plain means the City is greatly restricted in what can be done with the land immediately surrounding the lake. Mr. Jensen added that he is working with the City Engineer to determine if the existing shelter structure could be renovated to meet the new needs of the park, but improving the structure will be tough with the requirements established by the DNR. Mr. Jensen informed the group that work by Anoka County will begin in 2022 on the planned roundabout.

Mr. Heintz asked if more shelters could be added to the park, since that is a popular use for the park. Mr. Maher said that yes, more shelters could be added.

Ms. Amberg reviewed Draft Implementation Strategy - Approach #1. The spreadsheet prioritizes work to be done throughout the City. The base estimate column includes all work originally proposed by WSB for a total of \$37 million, with approximately \$14 million in alternate or deferred amenities. This approach prioritizes Moore Lake Park, Commons Park was secondary, and Community Park would wait for future work. The remainder neighborhood parks would also be prioritized except for a few that can wait for future work. Mr. Heintz shared feedback given to the Parks and Recreation Commission for a significant desire to have work done quickly on Moore Lake Park.

Ms. Amberg reviewed Draft Implementation Strategy - Approach #2. This approach prioritizes work to be complete on the three community parks sooner, along with a few neighborhood parks in underserved areas.

Mr. Schultz confirmed that in the first five years there are no committed plans to construct pickleball courts. Ms. Amberg confirmed that Pickleball Courts are included planning for Commons Park but that these improvement may not be completed in the first five years of the implementation plan.

Mr. Mitchell asked for guidelines, or policy, to be established to help the City shape a plan for what activities it will provide. Ms. Amberg replied these are still high-level discussions, and her firm's plans do not get into details. Mr. Mitchell asked for a City policy to guide how the City will choose what activities to implement.

Ms. Amberg reminded the committee of the survey feedback from Finding Your Fun in Fridley and subsequent community surveys. That feedback has inspired the plans and proposals to this point.

Mr. Shultz expressed support for Approach #1 to enhance neighborhood parks for the biggest impact on residents. The committee expressed general agreement. Mr. Heintz added that waiting on renovating Community Park would provide the City more time to gather data on recreation trends if plans should change for that particular.

Mr. Borman asked if Moore Lake can not receive newly constructed buildings, how the City would provide any restroom options. Mr. Jensen replied that he and the City Engineer are exploring options for improving the existing building, or possibly creating a vaulted restroom. Ms. Sedzielarz asked for timeline for when staff would know more information. Mr. Jensen said hopefully in the next few months. The DNR

and the City are still working on restrictions and possibilities to figure out the potential engineering solutions for the park.

Mr. Maher reminded the committee this is a long process and the City will still be working on the plan in ten years. What the committee is tasked with, right now, is a preliminary planning process. The committee is charting a basic roadmap for the City. He asked if the committee with the amount of information given on Approach #1, if they are comfortable with staff drafting a proposal, from tonight's discussions and feedback, for the committee to consider at its next meeting.

Mr. Heintz said yes, and acknowledged the City will need to address future changes as the plan is implemented.

Mr. Schultz added Approach #1 shows most immediate impact for residents.

Mr. Stangler Approach #2 because he does not feel Approach #1 serves certain youth activities, such as baseball, but understands the value in Approach #1.

Mr. Maher restated his perception of a consensus of the committee to endorse Approach #1 as a general guiding plan, knowing there will be changes and modifications based on cost and environmental conditions the City finds as work begins.

Mr. Heintz motioned that the Financing Committee formally endorse Approach #1, which should be recommended to the Fridley City Council. Seconded by Mr. Mitchell. All committee members voting aye.

3. Review Next Steps and Proposed Future Meeting Dates

Mr. Maher thanked the committee for their time, effort and dedication.

ADJOURN 8:40