



PARK SYSTEM IMPROVEMENT PLAN

CITY OF FRIDLEY TOWN HALL

June 5, 2021



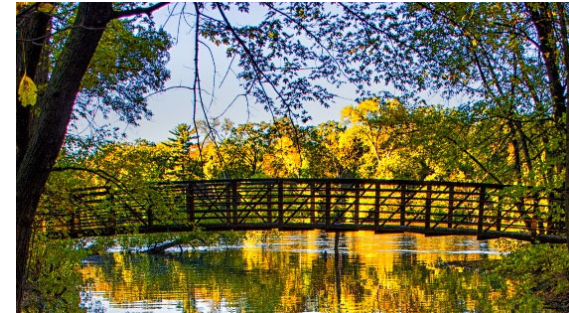
PARKS: OUR COMMON GROUND

“National parks are the best idea we ever had. Absolutely American, absolutely democratic, they reflect us at our best rather than our worst.” – Wallace Stegner



FRIDLEY'S PARK ASSETS

- Park system was established more than 50 years ago with federal funding
- 38 City Parks and 5 County Parks
- Rice Creek and Mississippi River waterways
- 7 School properties with recreation amenities
- 35 miles of paths, trails and sidewalks
- 10.4 miles of County trails



FRIDLEY IS TRANSFORMING

- Business and retail establishments
- Housing additions and redevelopment
- Northstar Rail site and surrounding development
- Younger population moving into the City
- Springbrook Nature Center
- Civic Campus



CURRENT PARK CONDITIONS

- No systematic or long-term maintenance plan
- Minimal ADA accessibility
- Playgrounds are up to 30 years old
- Equipment may need to be removed for safety
- Condition assessment: 59% graded C or less



RESIDENT DRIVEN PLAN

City Council heard from many residents that we need to do something about our parks.

City Staff had to determine if a lot more people felt that way or just a few.

The residents have been influencing this plan from day one and will continue to provide input as things move forward.



FINDING YOUR FUN IN FRIDLEY!



PARK IMPROVEMENT PLAN BENEFITS

1. Allows us to learn what park improvements residents want
2. Provides a deliberate process to hear from diverse voices
3. Establish a long-range vision
4. Find park service gaps and reduce redundancy
5. Opportunity to align park improvements with current recreation trends
6. Comprehensive view of park connectivity and ADA compliance
7. Establish community priorities for limited funding
8. Environmental stewardship
9. Evaluate park service areas and equity of park improvements



RESIDENT ENGAGEMENT: 2019 COMMUNITY WORKSHOPS

Initial Feedback

- Consulted leadership (Council and Park & Rec Commission)
- Held 4 public workshops with help of LISC Consulting
- Asked participants and youth what they wanted (surveys)

Gathered Data

- Social Pinpoint Maps collected feedback from park users
- Demographics researched
- Pulled data from Surveys and Comprehensive Plans

Inventory and Assessments

- Conducted inventory and assessments on parks and their amenities
- Develop concept designs and estimates for large community parks (Moore Lake, Commons and Community)
- Ballpark estimates for neighborhood park improvements



WHAT WE LEARNED

SAFE & CONNECTED



- ADA Compliant
- Lighting
- Restrooms



NATURE ACCESS



- Expand Trails
- Year-round Use
- Sustainable
- Environmentally Friendly



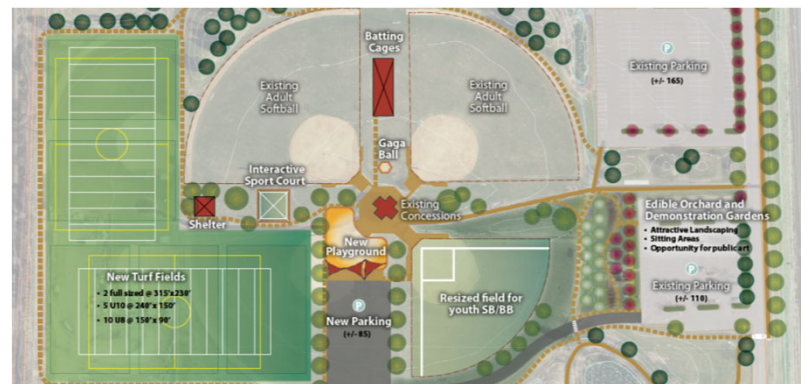
QUALITY FACILITIES



- Gathering Spaces
- Unique Experiences
- Flexible to meet changing needs



RESIDENT VISION – RAISING THE BAR



CONNECTING WITH PARK PLANNING EXPERTS



Guide Future Investments for Development
and Improvements

Identified Strategic Methodology
for Prioritization

Line Up Efforts with
2040 Comprehensive Plan



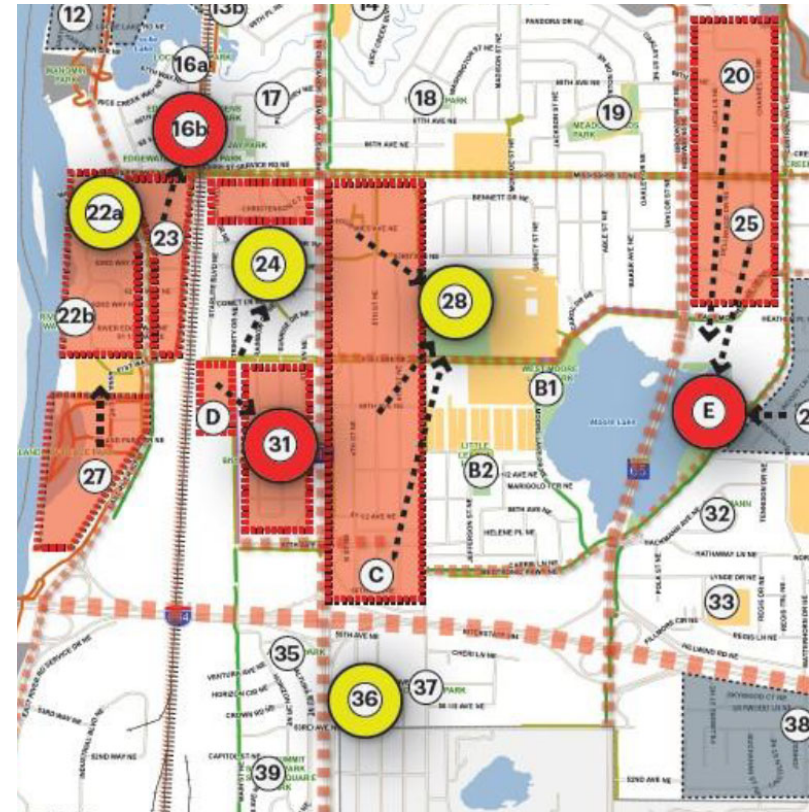
PLANNING PROCESS

- Performed in-depth analysis of area needs and parks
- Looked at access and barriers as well as underserved populations
- Initiated engagement with key groups and partners
- Concept plans designs
- Drafted an implementation strategy
- Prepared costs estimates
- Created story map website
- Continually collecting feedback



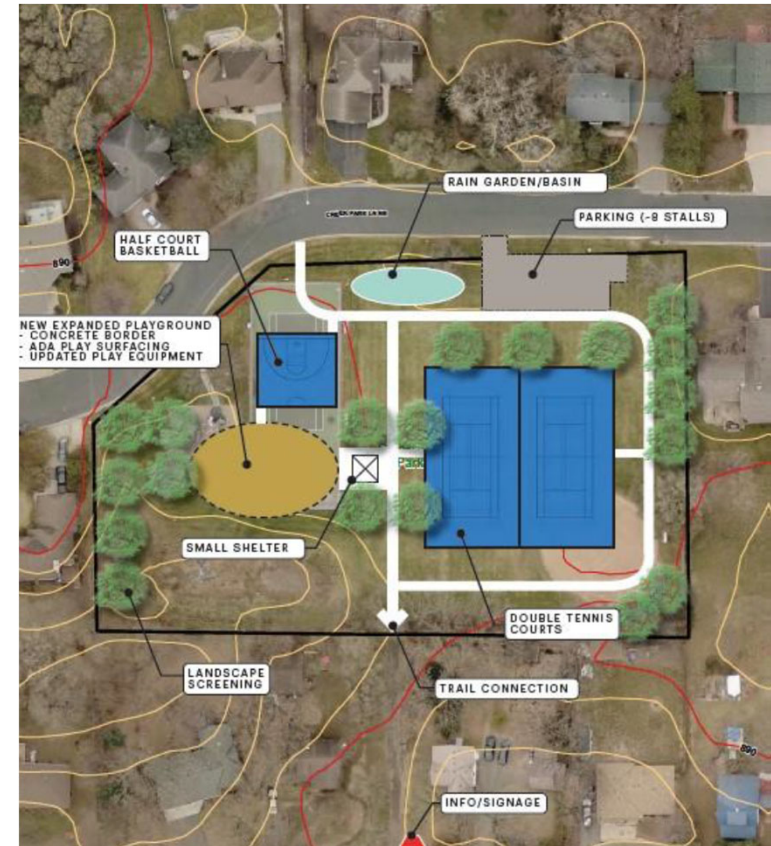
DRAFT IMPLEMENTATION STRATEGY

- Balance recreation across the community
- Meet the needs of diverse community demographics
- Improve access to recreation for underserved populations
- Account for changes in recreation trends and demands
- Build champions and support future projects
- Prioritize parks

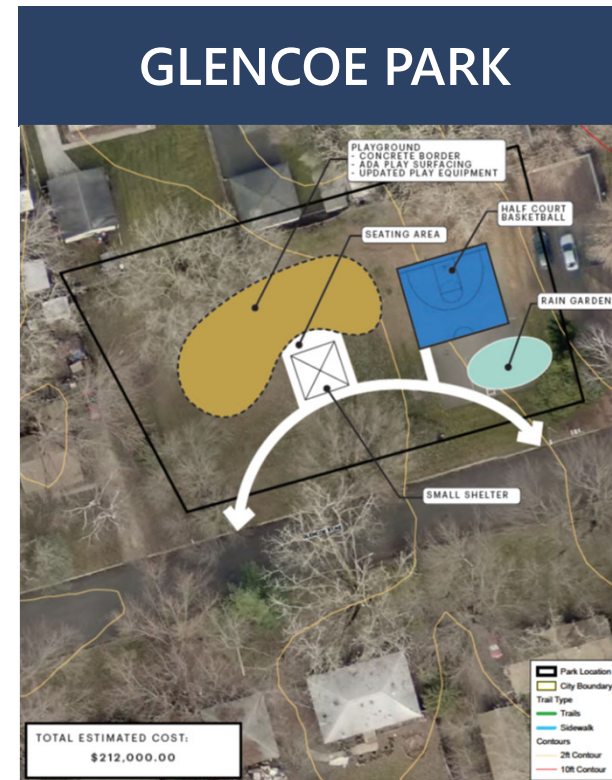


GOALS AND CONCEPT PLANS

- Enhance the unique identity of community parks
- Improve/update parks to meet the current needs of the community and current trends in recreation
- Increase connectivity throughout the park system
- Environmental stewardship initiatives

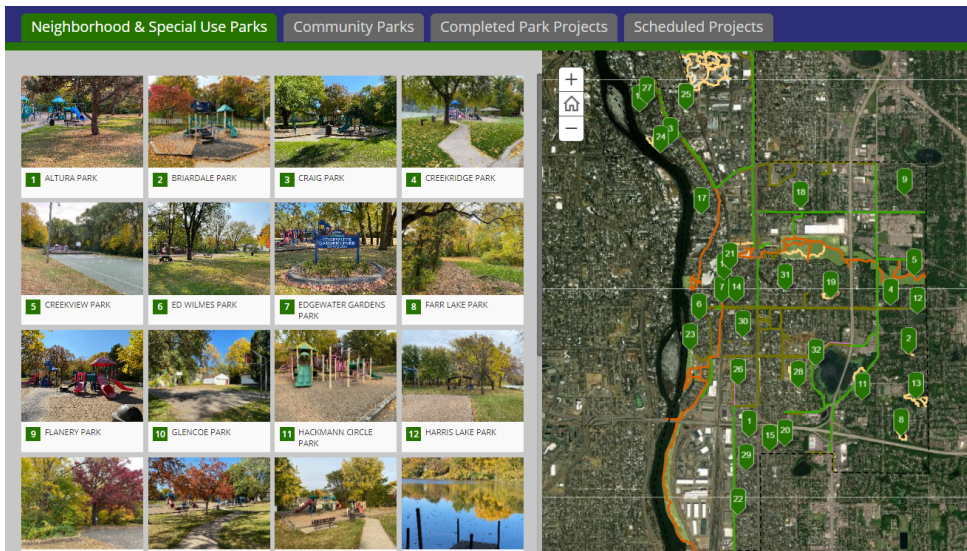


NEIGHBORHOOD PARKS CONCEPTS



RESIDENT FEEDBACK ON DESIGN CONCEPTS

Parks concept design online interactive map and questionnaires



- 721 - Neighborhood Surveys
- 163 - Moore Lake
- 53 - Community Park
- 98 - Commons Park

Over 1,000 surveys submitted!

Six neighborhood park meetings that served 13 park service areas



145+ residents attended



CONNECTING WITH OUR COMMUNITY

Meeting with
community
partners and key
stakeholders

Resident phone
calls, emails, and
Social Media
messaging

Presentations to
City Commissions
and City Advisory
Groups

Fridley Resident
Survey



RESIDENT DRIVEN: RESIDENT SURVEY FINDINGS

1. Fridley is getting younger
2. Many individuals and families are moving to Fridley to call it home. They want a vibrant park system...
3. Residents believe parks are important to quality of life
4. Residents believe appearance of parks is important to value of homes in Fridley
5. Most residents support making an investment in Fridley parks



**Results from the 2021 Resident Survey conducted by the Morris Leatherman Company*

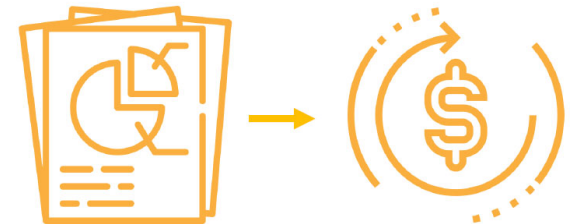


WHAT WE ARE DOING WITH YOUR FEEDBACK

Using it to refine the draft design concepts and cost estimates.

Guide us in determining park improvement priorities.

Help identify potential funding mechanisms.



BENEFITS OF INVESTING IN OUR PARKS

- Builds upon Focus on Fridley goals of vibrancy, safety, and environmentally friendly
- Expand access with a “parks for all” concept
- More programs and recreating options for fun in Fridley
- Increased home and business values
- Attract new residents, visitors and businesses
- Prepare for the next generation



IF WE DON'T TAKE ACTION

- Current pace will take 137 years to complete
- Continued deterioration of our assets
- Health and safety hazards (potential claims)
- Poor image and loss of city pride
- Loss of home and business value
- Decreased public support and trust
- Cost of revitalization continues to increase



CITY FINANCIALS

Fridley is a financially stable City, and we intend to continue on this path in the future.

- Stable financial rating
- Live and operate within our means
 - Fiscally responsible with policies and practices to assure it
- Use debt only when necessary
 - Capital systems like water, streets, sewers and buildings



The City has never used debt for building or maintaining parks.

Residents have voiced a desire to improve parks.



CURRENT CAPITAL INVESTMENT IN PARKS

- System-wide park improvements will cost millions
- Park improvements have been secondary to critical infrastructure such as utilities and public safety in the City budget
- A funding source for a comprehensive park improvement plan has not been identified



BALANCE

The Park System Improvement Plan needs to **BALANCED**.

- Cost
- Willingness to pay

Cost estimate = \$50 million



RESIDENTS WILLINGNESS TO PAY

From the 2021 Resident Survey:

- Residents are willing to pay \$10 per month more for park improvements
- The City could invest about \$25 million into the park system

The form, size, and timing of the financing will depend upon improvements identified by the Plan, as well as other factors like interest rates.

While the Plan would provide a guide for the City, the City Council would decide annually, when they adopt the budget or borrow money, what individual projects will actually come forward.



NEXT STEPS

We received your input on what you want to see happen to our parks system.

We now need your input to balance the Parks System Improvement Plan.

Will you help us?



OPEN FORUM



2021 RESIDENT SURVEY



FridleyMN.gov/ResidentSurvey



THANK YOU FOR ATTENDING!

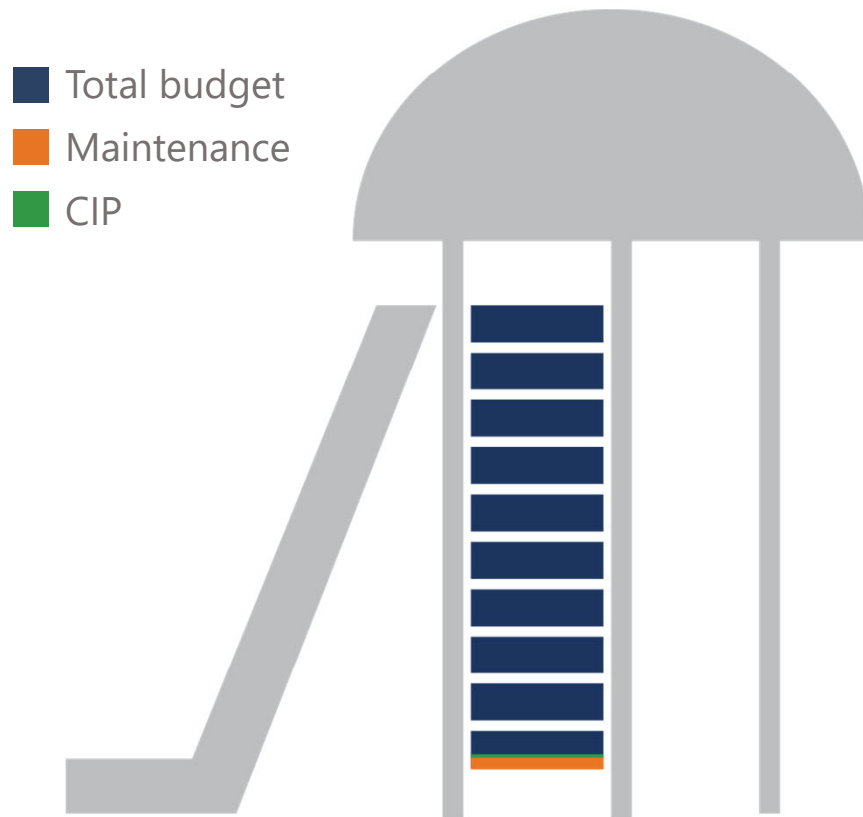


FUNDING OPTIONS

- Current capital improvement projects
- Donations and grants
- Round up (water bill)
- Dedicate additional Fridley Liquor revenue
- Events and fundraising
- Park dedications fees
- Bonding (referendum or others)
- Joint projects or sponsorship (schools and businesses)



CURRENT CAPITAL INVESTMENT IN PARKS



- Parks valued at \$43 million in assets
- Receive average of \$215,715/year for funding projects (LGA, park dedications fees, grants)
- Spend \$233,658 on average per year (CIP only) 2012-18
- Estimated beginning fund balance of parks capital for 2021 is \$968,309
- The City must maintain a balance of 35% of fund, per policy

