

Flanery Park

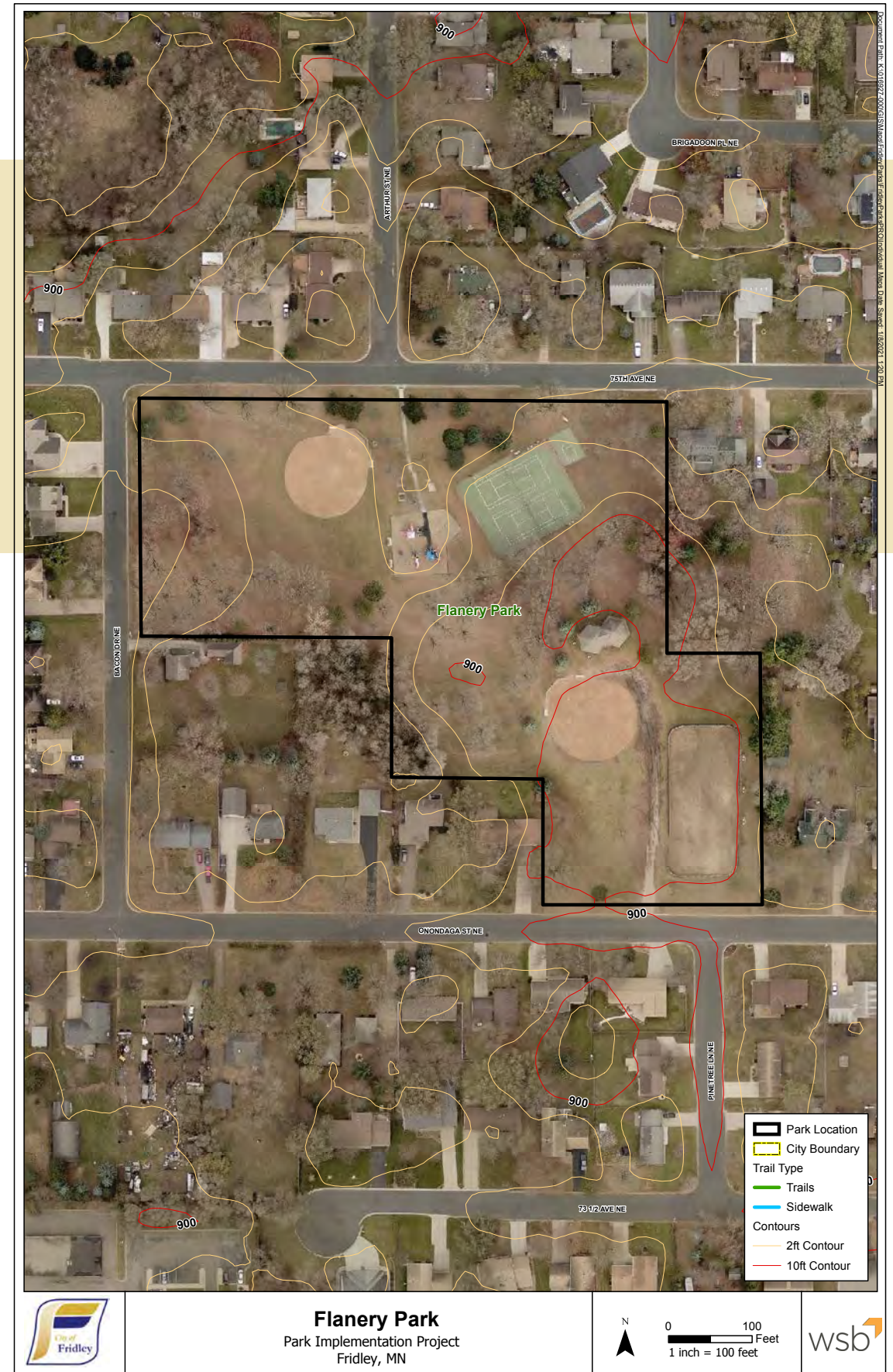
1505 ONONDAGA STREET NE

PARK TYPE: NEIGHBORHOOD PARK
SIZE: 7.9-ACRES
RESIDENTS SERVED: 1777
SPECIAL USES: HOCKEY RINK

DESCRIPTION:
 Neighborhood park with nice character, mature trees and a broad range of recreation amenities. Services neighborhood #8 with additional service areas of #7 and #9 with improved connections. Currently it has on-street parking, double tennis courts (poor orientation), half basketball court, two ballfields, park building with restrooms, hockey rink and pleasure skating area. Open access to skating area invites improper vehicular use of this space.



EXISTING PARK FEATURES:



RECOMMENDATIONS & ESTIMATE OF PROBABLE COSTS:

General recommendations include confirming an updated site layout with the neighborhood for an improved experience meeting a broad range of user groups.

Recommendations include:

- Removal of hockey rink (rink to remain at Madsen to service community)
- Off-street parking lot with curb and gutter for improved safety and accessibility due to larger service area (this will also help deter existing vehicular uses)
- Landscape enhancements
- Open lawn with low-grow and/or bee-friendly turf mixture
- New expanded playground meeting broader range of challenge levels and age groups with ADA compliant playground surfacing (engineered wood fiber) and rubber surfacing or tiles at primary access points and high-wear areas
- Concrete playground border
- Optional: Realign double tennis courts for N-S orientation
- Full size basketball court
- Park building improvements
- Site furnishings with common characteristic (benches, tables, receptacles, bike racks, drinking fountain, etc.)
- Expanded walks / trails for improved accessibility and internal loop route
- Challenge or fitness area
- Wayfinding signs
- Security light

The estimate of probable costs for completing the recommendations shown range from approximately \$765,000 to \$1.1 million.

Specific assumptions and exclusions:

- Does not account for unknown site factors (poor soils, drainage concerns, etc.)
- Assumes general budget for building improvements

PRIORITY LEVEL:



This neighborhood park offers a broad range of recreational amenities for multiple neighborhood service areas, and is ranked medium (Madsen is to be higher priority).

