

Creekridge Park

1380 CREEK PARK LANE

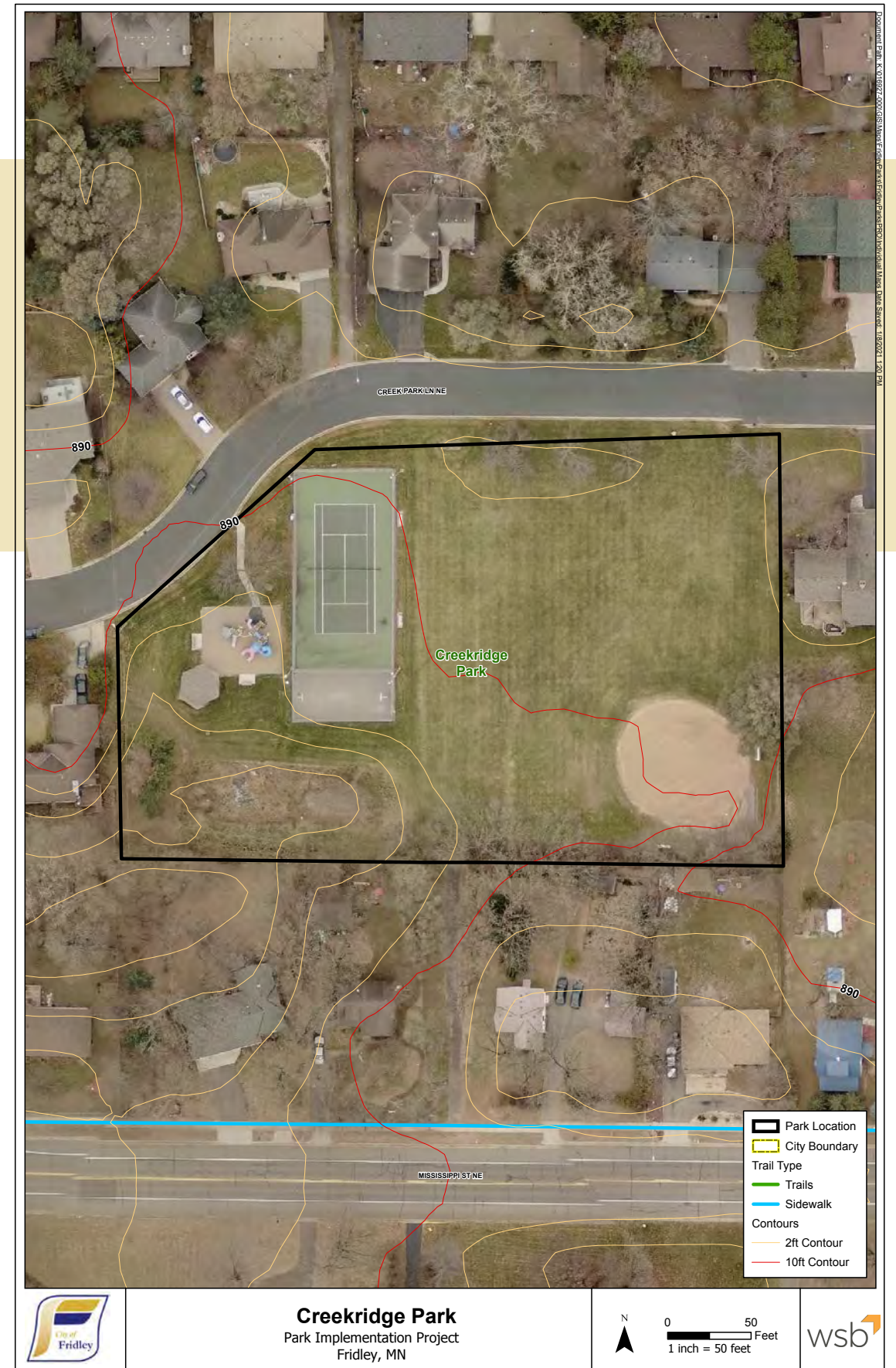
PARK TYPE: NEIGHBORHOOD PARK
SIZE: 2.2-ACRES
RESIDENTS SERVED: 963
SPECIAL USES: NONE

DESCRIPTION:

Neighborhood park with a functional design and nice character. The park directly services neighborhood #21 but can also help serve underserved neighborhoods #20 and #25. It has a single tennis court with undersized basketball tucked behind it, a formal ballfield, playground, small shelter and rain garden. There is a trail within an easement to the north of the park and a dead-end trail south that connect to the Mississippi Street sidewalk through a 15-foot easement.



EXISTING PARK FEATURES:



RECOMMENDATIONS & ESTIMATE OF PROBABLE COSTS:

General recommendations include maintaining, repairing and replacing items as needs dictate with improvements to overall accessibility and sustainability with a consistent character.

Recommendations include:

- Add plantings along playground for shade and screening for utility boxes
- Convert turf to low-grow turf mixture
- Natural resource management of rain garden
- Replace playground equipment with potential to expand playground area
- ADA compliant playground surfacing (engineered wood fiber)
- Concrete playground border
- Added walks and trail connections,
- ensure ADA compliant
- Replace basketball and tennis courts as necessary
- New picnic shelter with 2 tables and outlet
- Site furnishings with common characteristic (benches, tables, receptacles, bike racks, etc.)
- Replace backstop and players benches
- Wayfinding signs
- Security light and adjust timing for tennis court light

The estimate of probable costs for completing the recommendations shown range from approximately \$250,000 to \$325,000.

Specific assumptions and exclusions:

- Does not account for unknown site factors (poor soils, drainage concerns, etc.)
- Does not include utilities

PRIORITY LEVEL:



This neighborhood park offers a broad range of recreational amenities that are currently sufficient, though it services multiple neighborhoods, including underserved populations, and is ranked medium.

