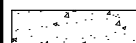
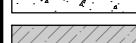





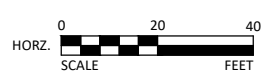
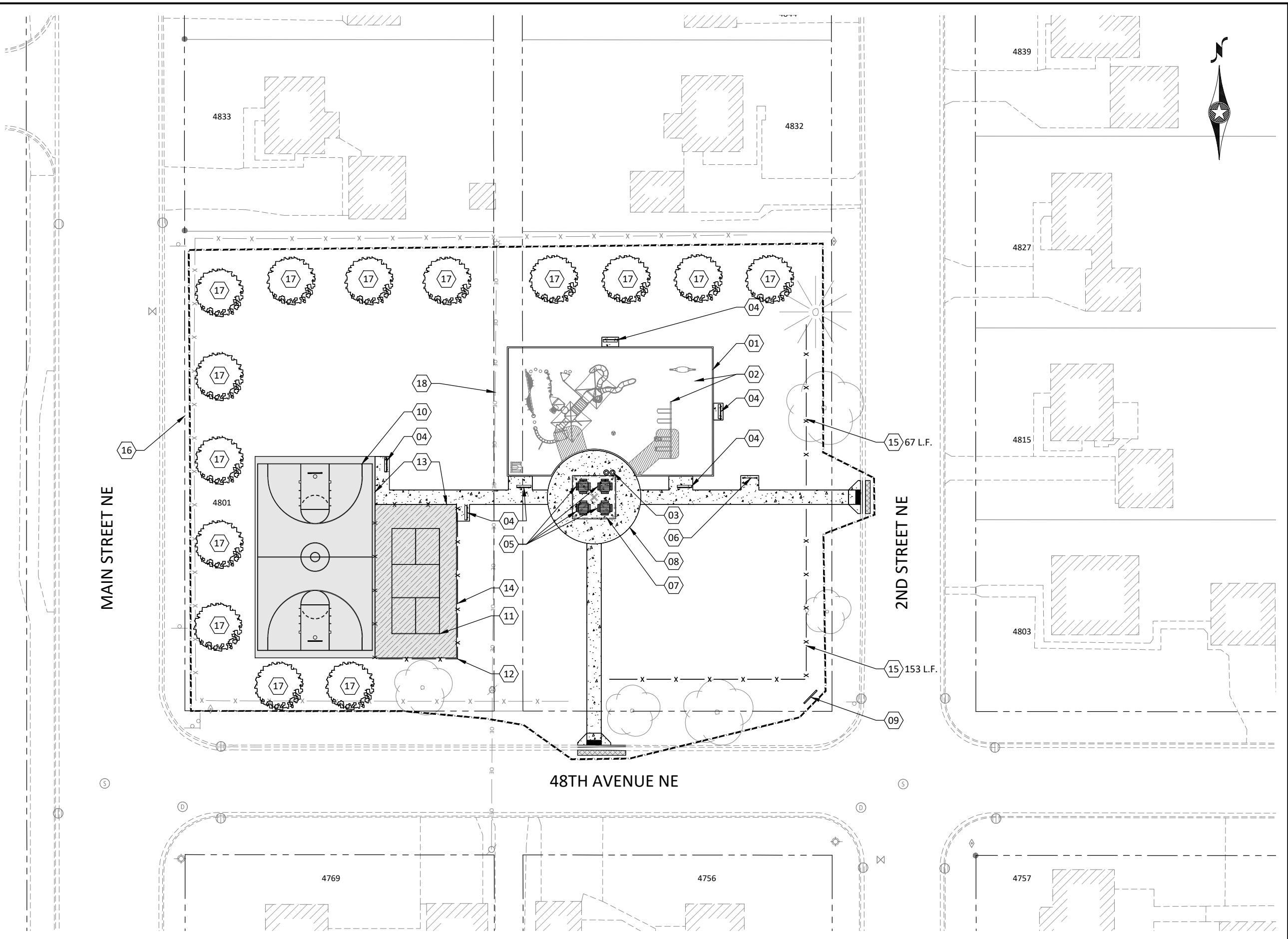


KEYNOTES

- 01 CONCRETE CONTAINER CURB - SEE SHEET 22
- 02 PLAY SURFACES AND EQUIPMENT (BY OTHERS)
- 03 TRASH/RECYCLING
- 04 INSTALL OWNER FURNISHED BENCH
- 05 INSTALL OWNER FURNISHED PICNIC TABLE
- 06 INSTALL OWNER FURNISHED BIKE RACK
- 07 INSTALL OWNER FURNISHED 18' X 18' SHELTER
- 08 CONCRETE PAD WITH FOOTINGS AS REQUIRED FOR SHELTER INSTALLATION - SEE SHEET 22
- 09 INSTALL OWNER FURNISHED SIGNAGE WITH POSTS (7'-6" WIDE W/ 6" POSTS) DIRECT BURY 3'-0" DEEP
- 10 BASKETBALL COURT - SEE SHEET 17
- 11 PICKLEBALL COURT - SEE SHEET 18
- 12 198 L.F. OF 8' H. FENCING AT PERIMETER OF PICKLEBALL COURT (BLACK VINYL CLAD FINISH) - SEE SHEET 21 - COORDINATE FENCE INSTALLATION WITH ADJACENT SURFACES.
- 13 4'-5" WIDE GATE AT COURT ENTRANCE
- 14 10'-0" WIDE GATE
- 15 ORNAMENTAL FENCING (LENGTH AS NOTED)
- 16 REPAIR EXISTING FENCE TO REMAIN TO 'LIKE NEW CONDITION
- 17 NEW TREE (BY OTHERS)
- 18 EXISTING OVERHEAD POWER LINES

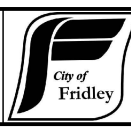
LEGEND

-  CONCRETE SIDEWALK/PAD
-  TENNIS / PICKLEBALL COURT
-  BASKETBALL COURT SEE SHEET 17
-  PIP RUBBER (BY OTHERS)
-  BITUMINOUS PATCH - MATCH ADJACENT BASE AND PAVEMENT COURSING
-  CONCRETE CURB & GUTTER
-  CONSTRUCTION LIMITS



I HEREBY CERTIFY THAT THIS PLAN, SPECIFICATION, OR REPORT WAS PREPARED BY ME OR UNDER MY DIRECT SUPERVISION AND THAT I AM A DULY LICENSED PROFESSIONAL ENGINEER UNDER THE LAWS OF THE STATE OF MINNESOTA.

Brandon Brodhag
 BRANDON J. BRODHAG
 LIC. NO. 59297 DATE 03/28/2024



7071 University Avenue NE
 Fridley, MN 55432

DESIGNED	NO.	ISSUE FOR	DATE
NRS	2	REV	06/10/2024
DRAWN			
CHECKED			
CLIENT PROJ. NO.			

NEIGHBORHOOD PARKS IMPROVEMENTS: PLYMOUTH SQUARE
 PROJECT NO. 24-70457
 SITE PLAN

SHEET 11 OF 22

I:\Engineer\Projects\2024\2024 Park System Improvement Plan\24-705 - Plymouth Square\Design\Drawings\Sheets\24-705_C601.dwg 6/17/2024 9:16:55 AM