



Fridley

COMMUNITY CONNECTION

Parks and Recreation Brochure Enclosed

JANUARY/FEBRUARY 2025
NO. 251

WE BELIEVE FRIDLEY WILL BE A SAFE, VIBRANT, FRIENDLY AND STABLE HOME FOR FAMILIES AND BUSINESSES.

7071 University Avenue NE
Fridley, MN 55432
phone: (763) 571-3450
FridleyMN.gov

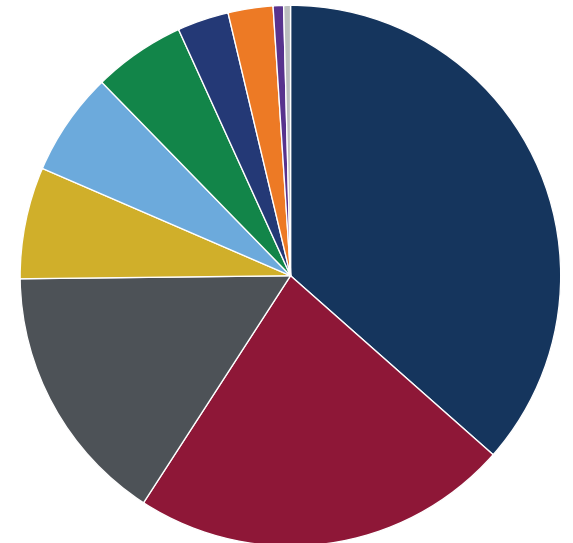
email: info@FridleyMN.gov

Mayor – David Ostwald
Councilmember-at-Large – Patrick Vescio
Councilmember 1st Ward – Tom Tillberry
Councilmember 2nd Ward – Ryan Evanson
Councilmember 3rd Ward – Ann Bolkcom
City Manager – Wally Wysopal

2025 Budget Summary

The Daily Value of Your City Tax Dollars at Work

| | |
|---|--------|
| Public Safety | \$1.22 |
| Capital Investments (Civic Campus, Parks) | \$0.76 |
| Public Works | \$0.53 |
| City Manager's Office | \$0.22 |
| Finance | \$0.21 |
| Community Development | \$0.18 |
| Parks & Recreation | \$0.10 |
| Springbrook Nature Center | \$0.09 |
| City Council | \$0.02 |
| IT Capital | \$0.01 |



\$3.35 per day to help fund essential City services for an increase of \$24 annually for 2025

WHAT'S INSIDE

- Curbside Recycling2
- New Zoning Permit Requirement for Homeowners2
- Drop Offs3
- New Art Programs3
- Lantern Light Hike3
- Utility Billing Changes4
- The Importance of Trees5
- Is it a Code Violation or Public Safety Violation?5
- Pet Waste is a Year-Round Business5
- Keeping Area Children Warm This Winter6
- Public Safety Department Enhances Community Care6
- Winter Parking Reminder7
- Fridley Community Calendar7
- Park System Improvement Plan Update8
- Winterfest8

What Does the 2025 Budget and Levy Include?

The City of Fridley's (City) 2025 Budget represents a spending plan based on the City's Vision Statement: We believe Fridley will be a safe, vibrant, friendly and stable home for families and businesses. Through months of planning by City staff and many hours of discussion and review by the City Council, the City's 2025 Budget was approved on December 9. In 2025, the City continues its commitment to improving the quality of life through investments in parks, infrastructure, equipment and people.

With the intention of delivering high value for taxes paid, some of the City's priorities for 2025 include:

1. Major investment in Commons Park
2. Updates to Sylvan Hills, Jubilee and Oak Hill Parks
3. Updates to the City's street, water, sewer and stormwater system to assure reliable infrastructure

4. Continued investment in personnel development focusing on retention and training

Costs associated with personnel (wages, benefits, taxes, training) continue to make up the single largest expense within the 2025 Budget. For the General Fund, which is primarily funded through property taxes, personnel costs will increase by 8.5% in 2025. The biggest impact on this increase is the renegotiation of labor contracts for the City's four Public Safety labor agreements and the addition of one full-time firefighter. Attracting and retaining top talent is vital to an organization's success and retaining quality employees is cost effective. Doing so also keeps our community safe by helping to ensure we have a fully staffed Public Safety Department.

Where Can I View the Full Budget? The complete City budget may be found online at FridleyMN.gov/CityFinancials.

City Budget, continued on page 7

Stay Connected!

Like Us on Facebook: search City of Fridley

Follow Us on X: @CityofFridley

Watch City Programming: Search Fridley Municipal TV

Sign up for email notifications on FridleyMN.gov

PRESORTED STD
U.S. Postage
PAID
Twin Cities, MN
Permit NO. 92886

New FridleyMN.gov launched in November 2024

The City of Fridley launched a new website in late November to streamline access to city services and resources. It was built in partnership with Granicus, a citizen experience website platform.

The new site was built by utilizing feedback from our residents to learn more about the information they were searching for and where they would look for it on the website. This data, along with best practices, helped create a resident-first approach to the website.



You can check out the website at FridleyMN.gov to learn more about services the City offers, events and programs, grant opportunities and more.



Curbside Recycling

Fridley residents do a great job recycling! Refresh your memory on what can go in your recycling cart to help keep our recycling free of contamination. Please remember to always place your recycling in the cart loose or in paper bags, never in plastic bags.

Request a recycling calendar

Did you know? Most Fridley residents in single family homes and apartments with 12 units or less have every other week recycling provided by Republic Services through a contract with the City. You should have received a recycling schedule in the mail at the end of December with your recycle days. If you have not received your calendar, or would like an extra, please email your address to Recycling@FridleyMN.gov or call 763-572-3594.

Upgrade your recycling cart

If your household is consistently filling your recycling cart, you can swap to a larger cart or add a second cart for no additional charge. Fill out the cart exchange form at FridleyMN.gov/Recycling to complete your request.

Please Do Not Bag Your Recyclables!

We Recycle!



Please make sure your recyclables are **empty, clean and dry** before placing them in your recycling cart.



PLASTICS BOTTLES & JUGS
Water, soda and juice bottles, dish soap bottles, shampoo bottles, soap and lotion bottles, and detergent jugs (empty and clean/rinse, and dry; caps on)



PLASTICS CUPS & CONTAINERS
Yogurt cups, pudding and fruit cups, clear disposable cups (no straws), margarine/whipped cream tubs, cottage cheese and similar containers, clear produce, deli and take-out containers (empty and rinse; lids on)



BOXES (FLATTENED)
Cardboard, cereal, cracker, pasta and tissue boxes, shoe, gift and electronic boxes, toothpaste and other toiletry boxes



CARTONS
Milk cartons, juice cartons, juice boxes, soup, broth and wine cartons (empty and clean/rinse, and dry; caps on)



PAPER
Mail, office and school papers, magazines and catalogs, newspapers and inserts, phone books (clean; staples OK)



METAL
Food cans and beverage cans (empty; labels OK)



GLASS
Brown, green and clear bottles and jars (empty and rinse; no lids)

Not Acceptable Curbside Since They...

Damage or Entangle Equipment

- Plastic bags
- Ropes, hoses and chains
- Scrap metal
- Bulky items
- Shredded paper

Harm Workers

- Medical sharps
- Diapers
- Batteries
- Hazardous products
- Propane tanks (all sizes)

Are Not Recyclable

- Foil pouches, bags, wrappers
- Dishes, vases, mirrors
- Plastic straws and utensils
- Glitter or wrapping paper
- Polystyrene foam

New Zoning Permit Requirement for Homeowners

Important Notice

The City of Fridley is developing a new zoning permit requirement for certain improvement projects. This change is designed to ensure that all construction and installations meet local zoning codes and regulations.

What residential projects require a permit?

Beginning this spring, residents will need to obtain a zoning permit for the following types of projects:

- **Fences:** Any permanent fence or retaining wall.
- **Sheds:** Accessory structures, including storage sheds, which are permanently installed and over five feet tall.
- **Other outdoor structures:** Pergolas, decks, patios, etc., that do not otherwise require building permits.

How to obtain a permit:

1. **Submit an application:** Access the online zoning permit application from the City's website (FridleyMN.gov/ZoningPermits).
2. **Provide necessary documents:** This may include site plans, construction drawings and other relevant documents. In most cases, construction drawings do not need to be created by an architect or professional engineer, as long as they have complete and accurate dimensions. For projects near the property line, you may need to provide a property survey or expose the property pins for the inspector, to ensure the project is in the proper location.
3. **Pay the required fees:** Fees are generally not charged for zoning permits, unless multiple on-site inspections are required.
4. **Review and approval:** City staff will review your application to ensure compliance with

the zoning chapters of the City Code. Once approved, you will receive a permit electronically.

Why is this change necessary?

This new requirement helps to:

- **Maintain property values:** Ensures that all structures are built to code and enhance the neighborhood's aesthetic appeal.
- **Protect public safety:** Verifies that structures are safe and stable.
- **Limit code enforcement violations:** Helps the City proactively manage improvements instead of issuing code enforcement violations.

For more information, please contact the City's Planning and Zoning Department website (FridleyMN.gov/ZoningPermits), call Community Development at 763-524-3592 or visit City Hall.

Drop-offs

The City's 2025 Recycling Drop-Off and Paper Shredding events kick-off in March at Recycle Technologies, Inc (1525 99th Ln NE, Blaine). Bring your bulky and electronic items to be recycled for free or low-cost. A \$50 discount will be applied to help cover the cost of items with a fee. Learn more at FridleyMN.gov/Dropoff.

2025 Drop-off days

- **March 8**, 8 a.m. - noon
- **May 10**, 8 a.m. - noon
- **July 12**, 8 a.m. - noon
- **September 13**, 8 a.m. - noon
- **November 8**, 8 a.m. - noon

Organics Recycling

If you are already recycling, consider making the jump to start organics recycling as well. Through the curbside organics recycling program, Republic Services will pick up all of your food scraps, paper towels, delivery pizza boxes, and more to be recycled into compost at an industrial compost facility. Over 250 families participate in the program in Fridley and divert thousands of pounds of food waste from their garbage each month. Find current pricing and learn more at FridleyMN.gov/Organics. Three free months are included on your second billing cycle for all sign-ups in March.

Recycling Ambassador Class

If you are looking to learn even more about how we manage solid waste, consider signing up for the Anoka County Recycling Ambassador Class. This free program, led by local industry experts, covers waste reduction, recycling and composting. Registration is now open for the summer session which is held virtually on Tuesday nights from June 11 through July 23. Sign up at AnokaCountyMN.gov/2104/Recycling-Ambassadors.

| Items Accepted for Free | |
|--|------------------|
| Item | Limit per Event? |
| Handheld-held Electronics (cell phones, laptops*, cables, cords, servers, tablets*) | No |
| Small Electronics (DVD/VCR players, consoles, computer towers, blenders, toaster ovens, landline phones, etc.) | No |
| Secure Paper Shredding | Yes, 4 boxes |
| Fluorescent Lights** | Yes, 10 |
| Small Engines / Scrap Metal*** (lawn mower, snowblower, generator, metal fencing, charcoal grill, posts, gutters) | No |
| Batteries**** | No |
| Bicycles | No |

| Items Accepted for a Fee | | | |
|--|---------|--|----------|
| <i>Discount: Take \$50 Off Your Total On Items Below</i> | | | |
| Item | Fee | Item | Fee |
| Appliances | \$12-23 | Printers | \$10-95 |
| Refrigerators/freezers, ovens, vacuums, washing machines/driers, dishwashers | \$12 | Residential inkjet, fax machine, scanner | \$10 |
| Humidifier and microwaves | \$15 | All-In-One, Residential Laser Jet | \$35 |
| Dehumidifier | \$23 | Commercial | \$95 |
| Water Heaters/Softeners | \$15-25 | Exercise Equipment | \$25-40 |
| Empty of water/salt | \$15 | Non-Electric | \$25 |
| Not empty of water/salt | \$25 | Electric | \$40 |
| AC Units | \$20-30 | Tires | \$2.25-9 |
| Window units | \$20 | Car | \$7 |
| Ground units | \$30 | SUV/Truck | \$9 |
| Mattresses/Boxsprings | \$20-25 | Rims | \$2.25 |
| Standard | \$20 | 18-wheeler | TBD |
| King/Pillowtop/Extra Thick | \$25 | Fire/Grilling Accessories** | \$6-35 |
| TV/Monitor | \$20-85 | Fire extinguisher | \$30 |
| Up to 17" | \$20 | Smoke/Carbon Monoxide detector***** | \$25 |
| 18" to 31" | \$30 | Propane tank – 1 lb (must be empty) | \$6 |
| 32" and greater | \$55 | Propane tank – 20 lb (must be empty) | \$20 |
| Console TV | \$85 | Propane BBQ grill (no tank) | \$15 |
| Rear projection | \$85 | Propane BBQ grill (tank) | \$35 |
| Broken Screen | +\$20 | | |

New Art Programs!

WOVEN TAPESTRY

Join fiber artist Becka Rahn to create your own small woven masterpiece using a laser cut bamboo loom. Learn how to combine and weave with yarns, wool roving, beads and textured threads to create a landscape or abstract design.

Ages 12+ Th Jan 30 6 - 8 p.m. \$25
Moore Lake Community Building

ZENTANGLE/PAL-ENTINE'S DAY

The Zentangle Method a meditative art that involves creating intricate designs using repetitive patterns or tangles. Tangles are combinations of dots, lines, simple curves, S-curves and orbs.



This class is taught by certified Zentangle instructor, Michelle Aalbers and all supplies are provided. No experience necessary.

Ages 12+ Sa Feb 15 10 a.m. - 12 p.m. \$50
Springbrook Nature Center

GATHERED BEAD EDGE BASKET

Using a gathering stitch with wooden beads, you will learn to create a wool felt basket with a reverse appliqué design. This fun technique makes a double layered felt



bowl shaped vessel which is sturdy enough to hold jewelry or odds and ends on your desk or dresser or make an abstract sculptural art object.

Ages 12+ Th Feb 27 6 - 8 p.m. \$25
Moore Lake Community Building

EMBROIDERED LEDGER BOOK

Make a pair of small notebooks with embroidered paper covers. The notebooks are 3x5 inches each and stitched at the top to make a ledger style book. You will learn an embroidery stitch called the sorbello stitch to embellish the covers.

Ages 12+ Th Mar 27 6 - 8 p.m. \$25
Moore Lake Community Building



Lantern Light Hikes

Bundle up and get ready to hike at Springbrook using the light of glowing lanterns to guide you. Listen for owls hooting, keep your eyes peeled for elusive nocturnal animals, warm up by the fire with a warm beverage. Registration is required, \$5 per person. Children five and under are free. Register online, or by calling the Nature Center at 763-572-3588.

Please check in at Springbrook's front desk for the event. If snowpack allows, snowshoes will be available to rent for \$5/pair, while supplies last.

February 7 and March 7 | 6:30 - 8:30 p.m.

Utility Billing Changes – What Residents Need to Know

As a resident of the City of Fridley (City), you receive a quarterly utility bill that combines four key services: water, sanitary sewer, storm water and recycling.

The changes in your bill from one quarter to the next can be a bit confusing. Some changes are due to the time of year, as seasonal consumptions can vary significantly. For example, during the warmer months you may have extra water usage to maintain your lawn. In addition, charges like sanitary sewer for residential and small multi-family are calculated once a year and carried forward for the next three quarters. While the City continuously tries to keep our rates low, there are factors beyond our control such as the rising cost of infrastructure and the Metropolitan Council Environmental Services charge for sewage collection and treatment. This accounts for approximately 80% of the expenses in the Sanitary Sewer Utility fund. The charges from MCES have increased an average of 7% over the past three years.

Utility Rate Changes

Utility Funds: Based on the current revenue and expenditures projections, and to maintain an adequate balance of cash in each fund, there will be a 5% increase in the Water Utility Fund, a 5% increase in the Sanitary Sewer Utility Fund and a 10% increase in the Storm Water Utility Fund.

Recycling Fund: The City's Recycling fund is used to cover the cost of the City's residential recycling program. The City has a contract with Republic Services Inc. to provide City-wide curbside recycling. The calendar year contract with Republic increased 8% over last year. The increase will be \$0.90 per dwelling unit per quarter for residential units of 12 users or less.

What does this mean to your utility bill?

The total impact of these proposed changes will result in an increase of approximately \$12.53 per quarter (5.5%) to a residential customer using 18,000 gallons of water a quarter. See Figure 2 for the cost comparison for the increase from 2024 to 2025 for an average residential quarterly utility bill.

How does Fridley compare with other cities? As you can see in Figure 1, for Cities in the metro area, the City of Fridley falls right in the middle.

The City has been able to keep our rate increases lower due to the City Council's decision to use American Rescue Plan Act funds from the Federal Government to help pay for costly utility infrastructure projects. 2024 is last year to use these funds. This decision helped our entire community threefold; first by keeping Utility rates stable for all our customers, second by reducing the need for external debt issuances in the Utility funds and third by keeping the City's aging utilities safe and well maintained.

Typical Household Water Use and Ways to Reduce Water Consumption

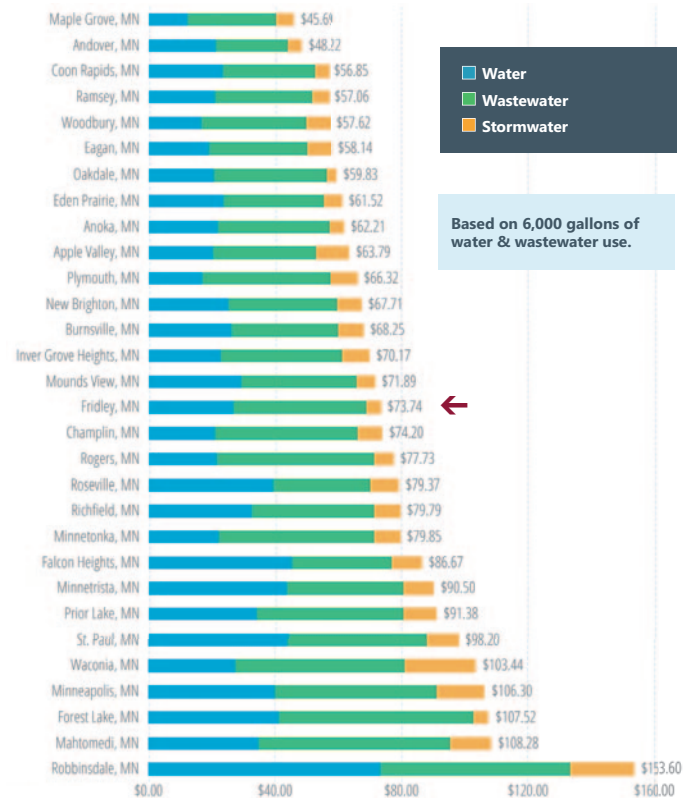
According to the American Water Works Association, about half of household water use is for flushing and laundry.

Some easy ways to reduce water consumption include:

- Turn off the water while brushing your teeth and washing dishes by hand
- Run the clothes washer only when full
- Update to a water-efficient washer, toilet and/or irrigation systems (The City is offering rebates through June 30 of 2026) FridleyMN.gov/WaterRebate
- Shorten shower time (one to two minutes shorter saves approximately 25 gallons per month)

Nobody likes rate increases, but they are sometimes a necessity. The City believes in a Fridley that is safe, friendly and vibrant and provides stable homes for families and businesses. Residents should always be assured of the best quality of services at the best value to ensure the future of these

FIGURE 1: AVERAGE REPORTED RATE METRO UTILITIES SERVING 5,000 OR GREATER



community assets. If you have any questions on your Fridley utility bill, you can reach us at 763-572-3529.

FIGURE 2: Residential (18,000 Gallons Used)

| | 2024 | 2025 | \$ Change | % Change |
|-------------------------------|------------------|------------------|-----------------|-------------|
| Water Utility | | | | |
| Fixed Charge | \$ 23.59 | \$ 24.77 | \$ 1.18 | 5.0% |
| Usage | \$ 53.66 | \$ 56.36 | \$ 2.70 | 5.0% |
| Subtotal | \$ 77.25 | \$ 81.13 | \$ 3.88 | 5.0% |
| Sanitary Sewer Utility | | | | |
| Fixed Charge | \$ 58.21 | \$ 61.12 | \$ 2.91 | 5.0% |
| Usage | \$ 70.00 | \$ 73.50 | \$ 3.50 | 5.0% |
| Subtotal | \$ 128.21 | \$ 134.62 | \$ 6.41 | 5.0% |
| Storm Water | | | | |
| Fixed Charge | \$ 13.38 | \$ 14.72 | \$ 1.34 | 10.0% |
| Recycling | | | | |
| Fixed Charge | \$ 10.90 | \$ 11.80 | \$ 0.90 | 8.3% |
| Total Utility Bill | \$ 229.74 | \$ 242.27 | \$ 12.53 | 5.5% |

Sign up to pay your utility bill automatically with our free Auto Pay program

- Save money (no stamps, no processing fees)
- No late fees, and no worries!
- Save time (no checks to write)
- Sorry, residential renters are not eligible.

Auto Pay is a free service and enrollment is as easy as 1, 2, 3!

1. Simply complete the form below.
2. Attach a voided check. (Deposit slips are not acceptable).
3. Return this form and voided check to the address listed below. Once you are enrolled, your utility bill will state *** Bank Draft***. It is that simple!

Bills are paid automatically from your checking account on the due date. Our **Auto Pay** program is a free service and you can unenroll anytime by contacting us at least 10 days prior to the due date.

Questions? Call us! 763-572-3529

Mail completed forms to:

City of Fridley, Attn: Utility Billing, 7071 University Ave NE, Fridley MN 55432

Account Name: _____
 Address: _____
 Utility Account #: _____
 Daytime phone#: _____
 Financial Institution: _____ Checking

By signing below, I am authorizing the City of Fridley Utility Billing Department to automatically withdraw my utility payments from my checking account.

Signature _____ Date _____



The Importance of Trees

This article was submitted by Emily Mashuga, an AmeriCorps member serving with the Climate Impact Corps in Fridley. Emily is supporting the implementation of the City’s Emerald Ash Borer Mitigation Plan and Urban Forestry Program.

“I speak for the trees,” said the Lorax. This was my favorite Dr. Suess book growing up and its meaning still holds true today.

Trees and forests are essential to our ecological, human and community health and well-being. They help with a variety of things, including:

- Producing oxygen and filtering out pollutants
- Soaking up carbon dioxide to help slow down and mitigate climate change
- Preventing soil erosion and improving soil quality
- Providing habitats and food sources for countless species
- Increasing property values

For these reasons, and many more, it is important to help preserve Fridley’s community forest.

Ash trees are at risk for the disease of Emerald Ash Borer (EAB), so please be on the lookout for symptoms of EAB as it is almost always fatal to ash trees and can spread easily. Some signs of EAB include:

- Dime-sized woodpecker holes
- Tree bark blanding
- D-shaped, small insect exit holes
- Yellowing leaves
- Tree suckering or branching
 - Sucker is when the tree attempts to shoot new growth wherever it can, usually at the base or branches.

Oak Trees

In Fridley, we also have many oak trees which are at risk of a fungus called oak wilt. Signs of oak wilt are leaf drop in midsummer, grayish-

green, brown or brown-tipped leaves when they drop, curling leaves that become stiff, yellow or bronze leaf color, suckering at the base of the tree, wilting leaves and branches dying back in the fall or summer.

Pruning can be very beneficial for trees, but only prune your oak trees during the dormant season. Pruning can get rid of dead or damaged branches to make space for healthy new growth to occur. It also provides a good foundation for long-term health. Depending on the year, it can be safe to prune from late November to early March, but December - February is the safest time to prune.

Approved Firewood

You can also help prevent the spread of tree diseases by only using the Minnesota Department of Agriculture-approved firewood as well. Moving non-certified wood from your home in Fridley to your cabin up north can move invasive species to a new area.

Is it a Code Violation or Public Safety Violation?

Do you have a concern you’d like to report? Some non-emergency concerns are addressed by the City’s Code Enforcement Specialist, and others are addressed by the Public Safety Department. Use this table to determine what type of concern to report.

To report a concern, visit FridleyMN.gov/ReportAConcern. Please note: If you are reporting an in-progress incident, do not use the online reporting system. Call 9-1-1 immediately. For non-emergencies, contact the Anoka County Non-Emergency Dispatch at 763-427-1212.

| | Code Enforcement | Police |
|---|------------------|--------|
| Noise concerns*: dog barking, lawn mowing after 9 p.m., engine noises, loud music/parties. | | X |
| Unlicensed or inoperable vehicles on the street . | | X |
| All on-street parking concerns. | | X |
| Unlicensed or Inoperable vehicle on residential property (single family homes or apartment buildings). | X | |
| Parking vehicles on the grass on a residential property. | X | |
| Long grass and weeds. Please note the average length of the grass must be over 10 inches. | X | |
| Illegal dumping. | X | X |
| Illegal home occupation. | X | |
| Animal concerns: stray animals, dangerous animals, wild animals. | | X |
| Excessive wildlife feeding on a private residential property. | X | |
| Unlicensed chickens or bees. | X | |
| Outdoor storage concerns. Front yard storage or visible from public right-of-way. | X | |

***Prohibited hours for noise violations.**

Weekdays: After 9 p.m. and Before 7 a.m. | **Weekends:** After 9 p.m. and Before 9 a.m.



Pet Waste is a Year-Round Business

Don’t forget to scoop the poop, even in winter! Melting snow can wash harmful nutrients and bacteria from pet waste into downstream waterbodies. The Coon Creek Watershed District recently installed three dog waste stations within the Springbrook Creek sub-watershed to help encourage dog owners to always pick up after their pets.



Keeping Area Children Warm This Winter



On October 24, the Fridley Police Association partnered with Omnetics, Inc., and the Fridley Lions Club to hold their annual Coats from Cops event. Coats, boots and other winter gear were provided to 176 families in an effort to keep area children warm this winter.



Fridley Public Service Department Enhances Community Care with New Community Resource Officer Program

The Fridley Public Safety Department is excited to introduce the Community Resource Officer (CRO) program as a trial program beginning in January 2025. The CRO program pairs specially trained Fridley police officers with the department's Embedded Co-Response Mental Health Clinician, Erin Buller, to respond to and work with mental health, social service and community health needs.

What is the Community Resource Officer Program?

The CRO program combines traditional police work with a focus on social services, mental health and community health. Starting 2025, during most of the week, Erin will accompany CRO officers in their squad car and focus their time on responding to crises or community needs calls while assisting other patrol officers with standard patrol duties. The role will place Erin and the specially-trained CROs front and center in the community when someone may be most willing to accept or need professional assistance or during a crisis. Additionally, it will reduce the burden on standard patrol officers that often, due to calls to other priority police calls, can only partially focus on one matter.

Six different patrol officers will rotate into the CRO position throughout the year. CROs will receive additional certifications, such as Crisis Intervention Training, and attend enhanced officer training on social services, working with various populations, and community outreach. Most significantly, CROs will also benefit from learning from Erin, an experienced social worker and crisis responder. CROs will be dispatched into the community by 911 just like any other police call. The community will also see CROs helping standard patrol officers, especially if their skills are needed. A patrol sergeant will supervise the CROs day-to-day operations, and the Support Division Lieutenant-led the program.

Meet Erin, Our Embedded Co-Response Mental Health Clinician

Erin joined the Fridley Police Department in February 2024 as the department's first Embedded Co-Response Mental Health Clinician, as part of the Anoka County Mobile Crisis team and contracted through Canvas Health. Canvas Health is a nonprofit community mental health clinic that helps children, adolescents, adults, and families find ways to heal as they cope with mental illness, substance use disorders, and crises. Erin is a licensed clinical social worker (LCSW) with a Master of Social Work (MSW) and a Master of Jurisprudence (MJ) degree, bringing extensive experience in mental health care. Currently, Erin works closely with officers in the field, joining them in their squad cars to respond to police calls and attend to ongoing community needs. As a member of the Anoka Mobile Crisis Team, Erin can coordinate and work with Anoka Mobile Crisis to provide comprehensive crisis and mental health services to the citizens of Fridley. The Anoka County Mobile Crisis Team is fully staffed and operated by Canvas Health and funded by Anoka County.

Over the past nine months, Erin has helped the Fridley Public Safety Department develop a more individual-focused approach. Erin has coordinated care plans involving the police, crisis individuals, and healthcare providers. Aligning the collaboration has helped ensure everyone is providing the best approach to care and helped officers respond more effectively. Erin has educated local care providers on managing crises early as well as coaching them on when to contact crisis services versus 911, reducing the need for police involvement, enhancing the support for individuals in need. Erin has arranged "meet and greet" sessions with individuals in the community, allowing officers to connect with



ERIN BULLER, EMBEDDED CO-RESPONSE MENTAL HEALTH CLINICIAN

them outside of a crisis, increasing trust and reducing future conflict. The holistic approach has led to fewer police calls, reduced mental health transport holds, and a stronger focus on individual care.

A New Approach: Building Relationships and Trust

Combining Erin's skills and experience with specially trained officers, the CRO program intends to enhance how officers interact with individuals in crisis. The focus and flexibility will allow CROs to build meaningful relationships, attend to ongoing issues, and improve future initiatives. Having numerous officers rotate through the position will allow these officers to later apply the specialized experience and training during their standard patrol duties, even if not assigned to the CRO program.

Why This Matters

The CRO program represents a significant step toward a more compassionate and practical approach to the community. By working closely with Erin, officers will be better equipped to help individuals in need through mental health support, connecting them to social services, or simply providing a supportive presence. This partnership is already making a positive impact, and as the program grows, we expect even greater results. The Fridley Public Safety Department looks forward to the continued success and positive changes the CRO program will bring to Fridley in 2025 and beyond.

City Budget, continued

BUDGETED GOVERNMENTAL FUNDS

| | 2025 BUDGET | 2024 BUDGET |
|---|----------------------|----------------------|
| REVENUES: | | |
| Taxes | \$ 16,785,800 | \$ 15,620,500 |
| Licenses and Permits | 1,377,600 | 1,309,000 |
| Intergovernmental: | | |
| Federal | 2,129,000 | 165,000 |
| State-General (Local Government Aid) | 2,462,400 | 2,198,900 |
| State-Categorical | 6,581,400 | 3,448,100 |
| Other-Local | 15,000 | 15,000 |
| Charges for Services | 3,763,600 | 3,497,300 |
| Fines and Forfeits | 152,000 | 132,500 |
| Special Assessments | 800,000 | 650,000 |
| Interest on Investments | 519,800 | 722,100 |
| Gambling Tax | 30,000 | 52,200 |
| Miscellaneous | 137,100 | 408,100 |
| TOTAL REVENUES | 34,753,700 | 28,218,700 |
| EXPENDITURES: | | |
| General Government | 4,794,000 | 4,670,200 |
| Public Safety | 14,221,200 | 13,088,200 |
| Streets and Highways (excluding construction) | 7,908,500 | 5,448,700 |
| Streets and Highways (construction) | 5,120,000 | 3,165,000 |
| Sanitation | 566,200 | 539,000 |
| Culture and Recreation | 1,809,100 | 1,696,700 |
| Capital Outlay | 10,727,000 | 6,876,000 |
| Miscellaneous | 29,200 | 29,200 |
| TOTAL EXPENDITURES | 45,175,200 | 35,513,000 |
| EXCESS (DEFICIENCY) OF REVENUES OVER EXPENDITURES | (10,421,500) | (7,294,300) |
| OTHER FINANCING SOURCES (USES): | | |
| Sale of General Fixed Assets | 200,000 | 127,000 |
| OPERATING TRANSFERS IN | | |
| General Fund | 566,900 | 542,500 |
| CIP-Parks | - | - |
| Building Fund | - | - |
| Capital Equipment | 250,000 | 200,000 |
| OPERATING TRANSFERS OUT | | |
| CIP Streets | (200,000) | (200,000) |
| CIP Parks | (158,200) | (154,000) |
| HRA | (163,500) | - |
| TOTAL OTHER FINANCING SOURCES (USES) | 495,200 | 515,500 |
| EXCESS (DEFICIENCY) OF REVENUES AND OTHER FINANCING SOURCES OVER EXPENDITURES AND OTHER FINANCING USES | (9,926,300) | (6,778,800) |
| PROPERTY TAX LEVY REQUIREMENT | \$ 21,677,595 | \$ 20,577,799 |

ENTERPRISE FUNDS

| | WATER | SEWER | STORM WATER | LIQUOR | 2025 BUDGET | 2024 BUDGET |
|---|--------------------|--------------------|------------------|-----------------|--------------------|--------------------|
| Revenues | | | | | | |
| Sales | - | - | - | 6,407,400 | 6,407,400 | 6,719,800 |
| Operating Revenues | 4,811,200 | 7,701,000 | 2,320,400 | - | 14,832,600 | 13,689,400 |
| Total Gross Profit and Operating Revenues | 4,811,200 | 7,701,000 | 2,320,400 | 6,407,400 | 21,240,000 | 20,409,200 |
| Operating Expenses | | | | | | |
| Personnel Services | 962,800 | 526,900 | 766,000 | 746,200 | 3,001,900 | 2,930,400 |
| Supplies | 462,500 | 62,500 | 42,000 | 31,100 | 598,100 | 534,700 |
| Cost of Sales | - | - | - | 4,525,000 | 4,525,000 | 4,845,900 |
| Other Services & Charges | 2,188,800 | 6,887,600 | 1,085,300 | 730,200 | 10,891,900 | 10,845,800 |
| Total Operating Expenses | 3,613,100 | 7,477,000 | 1,893,300 | 6,032,500 | 19,016,500 | 19,156,800 |
| Operating Income (Loss) | 1,197,100 | 224,000 | 427,100 | 374,900 | 2,223,100 | 1,252,400 |
| Nonoperating Revenue (Exp) | | | | | | |
| Interest Income | 100,000 | 45,000 | 45,000 | 15,000 | 205,000 | 177,600 |
| Grant Proceeds | - | 195,500 | 1,575,000 | - | 1,770,500 | 1,510,000 |
| Capital Outlay | (6,165,000) | (1,548,000) | (2,700,000) | (75,000) | (10,488,000) | (4,955,000) |
| Debt Service | 2,385,100 | (46,800) | (36,300) | - | 2,302,000 | (993,300) |
| Total Nonoperating Rev (Exp) | (3,679,900) | (1,354,300) | (1,116,300) | (60,000) | (6,210,500) | (4,260,700) |
| Income (Loss) before Operating Transfers | (2,482,800) | (1,130,300) | (689,200) | 314,900 | (3,987,400) | (3,008,300) |
| Operating Transfers In (Out) | - | - | - | (388,500) | (388,500) | (388,500) |
| Net Income (Loss) | (2,482,800) | (1,130,300) | (689,200) | (76,600) | (3,987,400) | (3,396,800) |

Questions? Email Finance Director Joe Starks at Joe.Starks@FridleyMN.gov or call 763-572-3520.

Fridley Community Calendar

January

- January 1 | City Offices Closed
- January 6 | City Council Meeting
- January 6 | Parks and Recreation Commission Meeting
- January 8 | Public Arts Commission Meeting
- January 9 | Housing and Redevelopment Authority Meeting
- January 13 | Charter Commission Meeting
- January 14 | Environmental Quality and Energy Commission Meeting
- January 15 | Planning Commission Meeting
- January 20 | City Offices Closed
- January 27 | City Council Meeting

February

- February 2 | Parks and Recreation Commission Meeting
- February 3 | Charter Commission Meeting
- February 5 | Public Arts Commission Meeting
- February 6 | Housing and Redevelopment Authority Meeting
- February 10 | City Council Meeting
- February 11 | Environmental Quality and Energy Commission Meeting
- February 17 | City Offices Closed
- February 19 | Planning Commission Meeting
- February 24 | City Council Meeting

NOTE: City Council and Commission meetings start at 7 p.m. Meetings are typically held at the Fridley Civic Campus, 7071 University Avenue NE. The public is welcome.

Upon request, accommodation will be provided to allow individuals with disabilities to participate in any City of Fridley services, programs, or activities. Hearing impaired persons who need an interpreter or other persons who require auxiliary aids should contact the City at 763-572-3450.

Winter Parking Reminder: No Overnight Parking

Friendly reminder: Overnight parking on City streets is prohibited from November 1 until April 1 from 2-6 a.m. Learn more at FridleyMN.gov/Parking

- By removing your vehicle off the street, you are:
- Avoiding a parking violation ticket.
 - Making streets safer by allowing plows to clear the full width of the roadway.
 - Ensuring there is no damage done to your vehicle from snow being cleared.
 - Allowing routes to be more accessible for emergency vehicles.
 - Helping snow plow drivers to be able to clear the streets quickly (and sometimes multiple times per day)!

Fridley City Code, Chapter 506.05

From November 1-April 1 each year, it is a violation to park any vehicle on City streets from 2-6 a.m. It is also a violation to stop, park or leave standing a vehicle in such a manner as to impede the plowing or removal of snow, ice or waste from public streets or highways, regardless of the date or time.



Park System Improvement Plan Update

We are reimagining what Parks and Recreation means in the City of Fridley. Our park system improvement plan has transformed Moore Lake Park and six of our neighborhood parks with the biggest year of changes yet in 2025!

In recent years, there have been significant trends in how people use parks and what they want from a local park system. Splash pads, the explosion in the popularity of pickleball, demand for inclusive parks and playgrounds, public art and unique community gathering spaces are just a few of these trends that will be found in Fridley's new parks.

Commons Park

With an expected groundbreaking in July of 2025, the Commons Park project will kick off the largest park project in Fridley history. Central to the design of the new park space will be a large splash pad featuring dozens of playful interactive water features that are sure to be a summertime favorite in Fridley for many years to come.

Pickleball

The popularity of pickleball has also been a driving force behind a number of our park designs as new courts were installed at Moore Lake Park and a large, six court complex is in the works for Commons Park. Fridley Parks and Recreation offers full range of pickleball opportunities for those picking up a paddle for the first time to those looking for the challenge of league play.

Inclusive Playgrounds

Playgrounds throughout Fridley are being designed and built to better accommodate individuals of all ages and abilities. Our neighborhood parks have updated surfacing to include a mixture of rubber surfacing and engineered wood fiber to replace our old sand surfaces, that are not up to current ADA standards. The new playground at Commons Park will be the most accessible playground in the city with smooth surfacing throughout the play space and equipment that will allow for easy access and unique sensory experiences.

Gathering Spaces

Finally, parks provide the perfect place to gather with friends and family. Our neighborhood parks nearly all feature new park pavilions and picnic tables which are perfect for a shaded lunch, birthday party or remote work location. New park buildings at Moore Lake and Commons Park will provide year-round places for gatherings, meetings, classes, events and recreation programs that will bring Fridley closer together as residents enjoy these beautiful spaces.

Funding

While most of these improvements are taxpayer-supported, nearly \$1.5 million in grants are going towards park improvements at Commons Park, Springbrook Nature Center, Oak Hill Park and Jubilee Park through the State of Minnesota Department of Natural Resources and Community Development Block Grants.

Whether you are at a youth baseball game, family gathering or neighborhood playground, our parks offer something for everyone. Learn more at FridleyMN.gov/ParkPlan.

FREE winterfest



Noon - 3 p.m. | Saturday, January 25
Springbrook Nature Center, 100 85th Avenue NE

Wander through our Winter Wonderland with activities for the whole family!

ACTIVITIES INCLUDE:

| | | | |
|-----------------|---------------------|------------|------------|
| Medallion Hunt | Snowshoeing | Kick Sleds | Zumba |
| Fat Tire Bikes | Snow Games | Storytime | Sauna Demo |
| Police K-9 Demo | S'mores & Hot Cocoa | Campfires | And more! |

WINTER GEAR DRIVE:
Let's keep each other warm! Donate gently used/new winter gear through January 22 at both Fridley Civic Campus and Springbrook Nature Center (during business hours). Please bring in freshly washed or new items. All donated gear will be available free of charge during Winterfest.




Save the Date for This Year's '49er Days Festival!

June 12-14