



Resolution No. 2024-05

Approving a Municipal Inflow and Infiltration
Grant Application and Agreement with
Metropolitan Council Environmental Services



Background

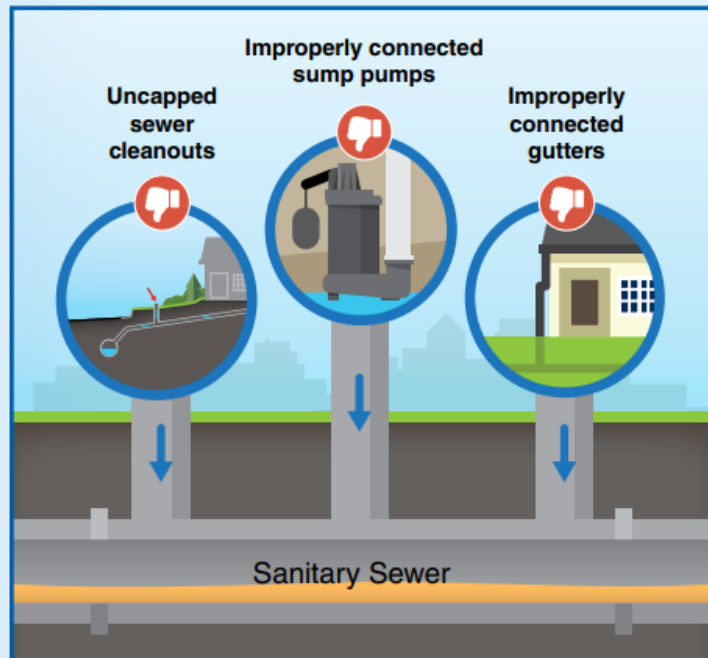
- Met Council Environmental Services (MCES) has developed a new program to help address Inflow/Infiltration (I/I) from private services
- Estimated up to 80% of I/I comes from private sources
- Required special legislation



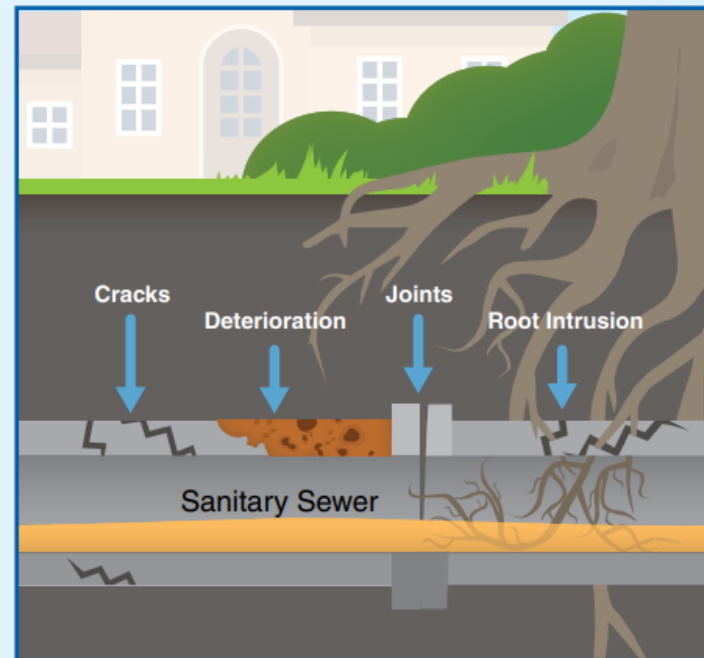
Inflow / Infiltration

I/I costs everyone!

Inflow and infiltration (I/I) is clear water that enters the wastewater system. It overloads the system and can cause costly sewer backups into homes and buildings.



Inflow is clear water that quickly enters the wastewater system after rainfall events from sources such as sewer cleanouts, sump pumps, gutters, building foundation drains, and broken maintenance hole covers.



Infiltration is clear water that gradually enters the wastewater system below ground through cracks and openings in sewer service lines and joints, and public sewer mains and deteriorated maintenance holes.

MCES Program

- Eligible work includes
 - **Private lateral** repair and / or replacement
 - **Foundation drain disconnections** and new sump pump, if associated with the foundation drain disconnect
 - **Sewer lateral inspection and cleaning** costs if applicant meets the equity need or televising and cleaning result in repair or replacement of sewer lateral

City of Fridley Grant

- The City of Fridley made a preliminary application in December 2023 for the program and has been allocated \$50,000.
- Qualified spending on eligible work can happen between January 1, 2024 and December 31, 2024.
- City will participate for those meeting income guidelines (up to 10% of cost) and with staff administering the program and coordinating work.

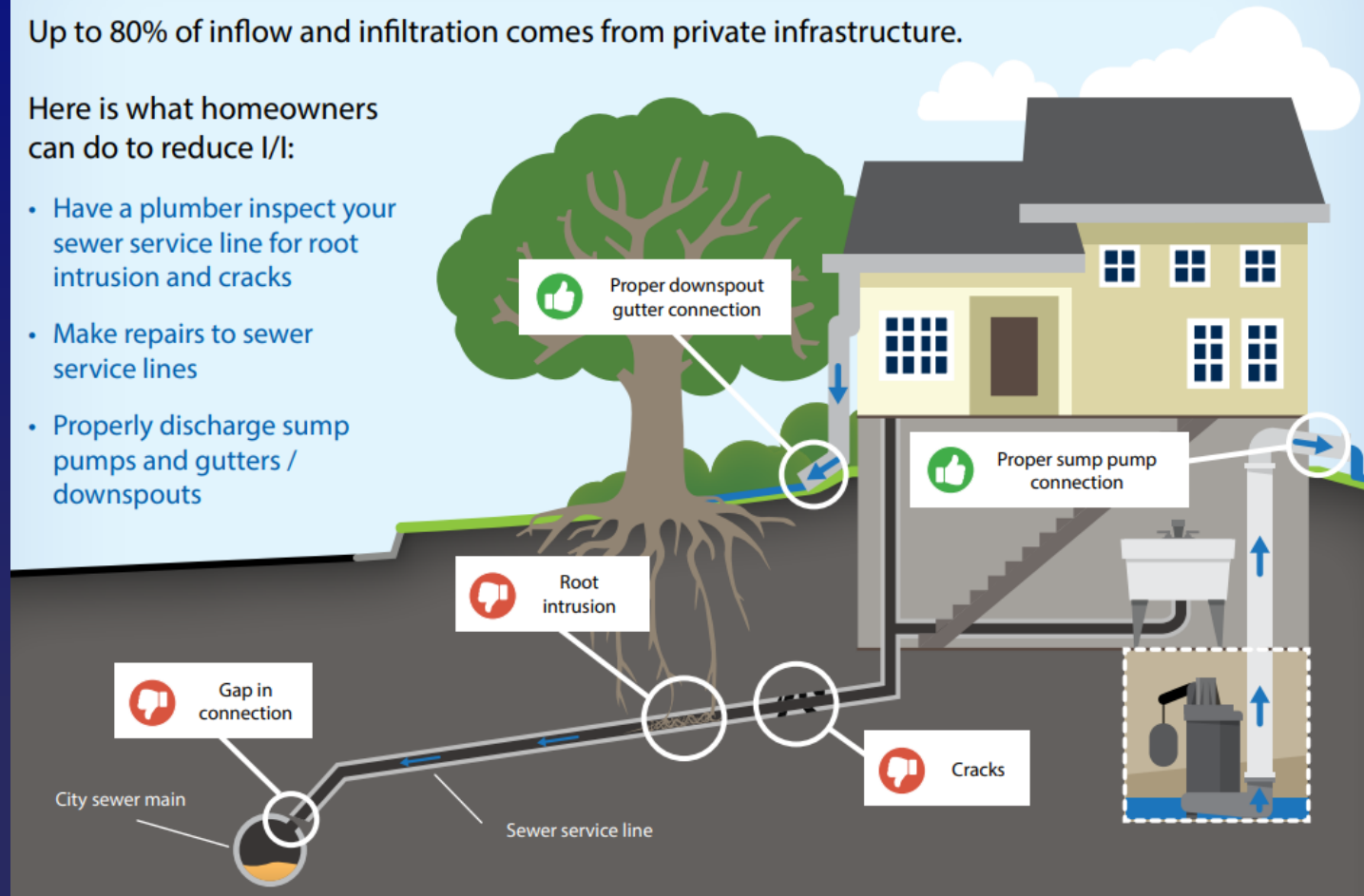
Recommendation

You can reduce inflow and infiltration

Up to 80% of inflow and infiltration comes from private infrastructure.

Here is what homeowners can do to reduce I/I:

- Have a plumber inspect your sewer service line for root intrusion and cracks
- Make repairs to sewer service lines
- Properly discharge sump pumps and gutters / downspouts



- Staff recommends a motion to approve Resolution No. 2024-05 found on page 131 of the agenda, Approving a Municipal Inflow and Infiltration Grant Application and Agreement with Metropolitan Council Environmental Services

Questions or Comments?

Reducing inflow and infiltration benefits you and your community

Keeping clear water out of the wastewater system



Improves community health and the environment by reducing sewer overflows to waterways and other sensitive resources



Reduces the risk of sewer backups into homes and businesses



Reduces community investments and sewer fees for larger sewer pipes and facilities