



# Moore Lake Park Update

---

February 13, 2023



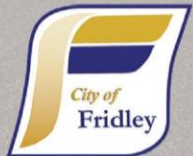


**Moore Lake Park Facility**  
*Parking Lot Elevation*









**Moore Lake Park Facility**  
*Entry Perspective*

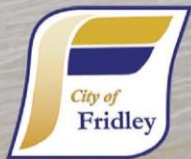


# Exterior Refinements

- Additional windows on southwest corner
- Additional windows on east side to match window detail on lake side
- “Fin” detailing added to east and west sides to create visual interest
- Bird-friendly glass specified



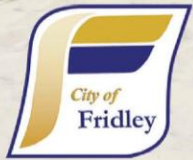




## Moore Lake Park Facility

*Lakeside Elevation*





## Moore Lake Park Facility

*Lakeside Perspective*







**Moore Lake Park Facility**  
*Indoor Gathering - Entry*







**Moore Lake Park Facility**  
*Indoor Gathering*



# Interior Refinements

- Audio-visual equipment
- Video conferencing equipment
- Electrical distribution to allow for elections setup
- Integrated sound attenuation
- Polished concrete flooring
- Mechanical shades or smart glass options







**Moore Lake Park Facility**  
*Indoor Gathering*







## Moore Lake Park Facility

*Indoor Gathering*






# Estimated Costs

- Costs are within budget for the most recent estimate from Kraus-Anderson
- Some modest additions, these were afforded within the budget
- Any exceedance should be within contingency amounts
- Construction cost variability exists so there are limits to estimates

## CITY OF FRIDLEY


### MOORE LAKE PARK BUILDING

5872 NE CENTRAL AVE, FRIDLEY MN  
ARCH. PROJECT NO. 22-25




©2023 KRAUS-ANDERSON

SHEET INDEX	
SHEET NUMBER	SHEET NAME
00	GENERAL
01	GENERAL TITLE SHEET
02	GENERAL TITLE SHEET
03	GENERAL TITLE SHEET
04	GENERAL TITLE SHEET
05	GENERAL TITLE SHEET
06	GENERAL TITLE SHEET
07	GENERAL TITLE SHEET
08	GENERAL TITLE SHEET
09	GENERAL TITLE SHEET
10	GENERAL TITLE SHEET
11	GENERAL TITLE SHEET
12	GENERAL TITLE SHEET
13	GENERAL TITLE SHEET
14	GENERAL TITLE SHEET
15	GENERAL TITLE SHEET
16	GENERAL TITLE SHEET
17	GENERAL TITLE SHEET
18	GENERAL TITLE SHEET
19	GENERAL TITLE SHEET
20	GENERAL TITLE SHEET
21	GENERAL TITLE SHEET
22	GENERAL TITLE SHEET
23	GENERAL TITLE SHEET
24	GENERAL TITLE SHEET
25	GENERAL TITLE SHEET
26	GENERAL TITLE SHEET
27	GENERAL TITLE SHEET
28	GENERAL TITLE SHEET
29	GENERAL TITLE SHEET
30	GENERAL TITLE SHEET
31	GENERAL TITLE SHEET
32	GENERAL TITLE SHEET
33	GENERAL TITLE SHEET
34	GENERAL TITLE SHEET
35	GENERAL TITLE SHEET
36	GENERAL TITLE SHEET
37	GENERAL TITLE SHEET
38	GENERAL TITLE SHEET
39	GENERAL TITLE SHEET
40	GENERAL TITLE SHEET
41	GENERAL TITLE SHEET
42	GENERAL TITLE SHEET
43	GENERAL TITLE SHEET
44	GENERAL TITLE SHEET
45	GENERAL TITLE SHEET
46	GENERAL TITLE SHEET
47	GENERAL TITLE SHEET
48	GENERAL TITLE SHEET
49	GENERAL TITLE SHEET
50	GENERAL TITLE SHEET
51	GENERAL TITLE SHEET
52	GENERAL TITLE SHEET
53	GENERAL TITLE SHEET
54	GENERAL TITLE SHEET
55	GENERAL TITLE SHEET
56	GENERAL TITLE SHEET
57	GENERAL TITLE SHEET
58	GENERAL TITLE SHEET
59	GENERAL TITLE SHEET
60	GENERAL TITLE SHEET
61	GENERAL TITLE SHEET
62	GENERAL TITLE SHEET
63	GENERAL TITLE SHEET
64	GENERAL TITLE SHEET
65	GENERAL TITLE SHEET
66	GENERAL TITLE SHEET
67	GENERAL TITLE SHEET
68	GENERAL TITLE SHEET
69	GENERAL TITLE SHEET
70	GENERAL TITLE SHEET
71	GENERAL TITLE SHEET
72	GENERAL TITLE SHEET
73	GENERAL TITLE SHEET
74	GENERAL TITLE SHEET
75	GENERAL TITLE SHEET
76	GENERAL TITLE SHEET
77	GENERAL TITLE SHEET
78	GENERAL TITLE SHEET
79	GENERAL TITLE SHEET
80	GENERAL TITLE SHEET
81	GENERAL TITLE SHEET
82	GENERAL TITLE SHEET
83	GENERAL TITLE SHEET
84	GENERAL TITLE SHEET
85	GENERAL TITLE SHEET
86	GENERAL TITLE SHEET
87	GENERAL TITLE SHEET
88	GENERAL TITLE SHEET
89	GENERAL TITLE SHEET
90	GENERAL TITLE SHEET
91	GENERAL TITLE SHEET
92	GENERAL TITLE SHEET
93	GENERAL TITLE SHEET
94	GENERAL TITLE SHEET
95	GENERAL TITLE SHEET
96	GENERAL TITLE SHEET
97	GENERAL TITLE SHEET
98	GENERAL TITLE SHEET
99	GENERAL TITLE SHEET
100	GENERAL TITLE SHEET



SITE PLAN - A1.A



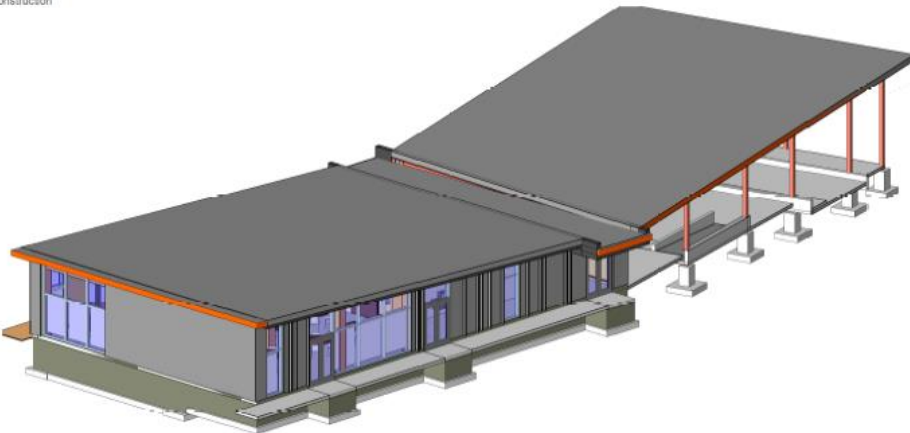
SITE PLAN - A2.A



# Bidding Method

- 8-10 bid packages being finalized
- 4-5 will be in excess of \$350,000
- Remaining items will be combined
- Kraus-Anderson collaborating with City staff to administer bidding
- Bids to be opened mid-March

Not for Construction



Not for Construction

SHEET LIST	
SHEET #	SHEET NAME
001	GENERAL NOTES
002	GENERAL STRUCTURAL SYSTEM
003	FOUNDATION PLAN
004	1ST FLOOR PLAN
005	2ND FLOOR PLAN
006	3RD FLOOR PLAN
007	MECHANICAL, ELECTRICAL AND PLUMBING
008	ARCHITECTURAL FINISH AND INTERIORS
009	EXTERIOR FINISH AND INTERIORS
010	DETAILS

1 BUILDING PERSPECTIVE FOR REFERENCE ONLY

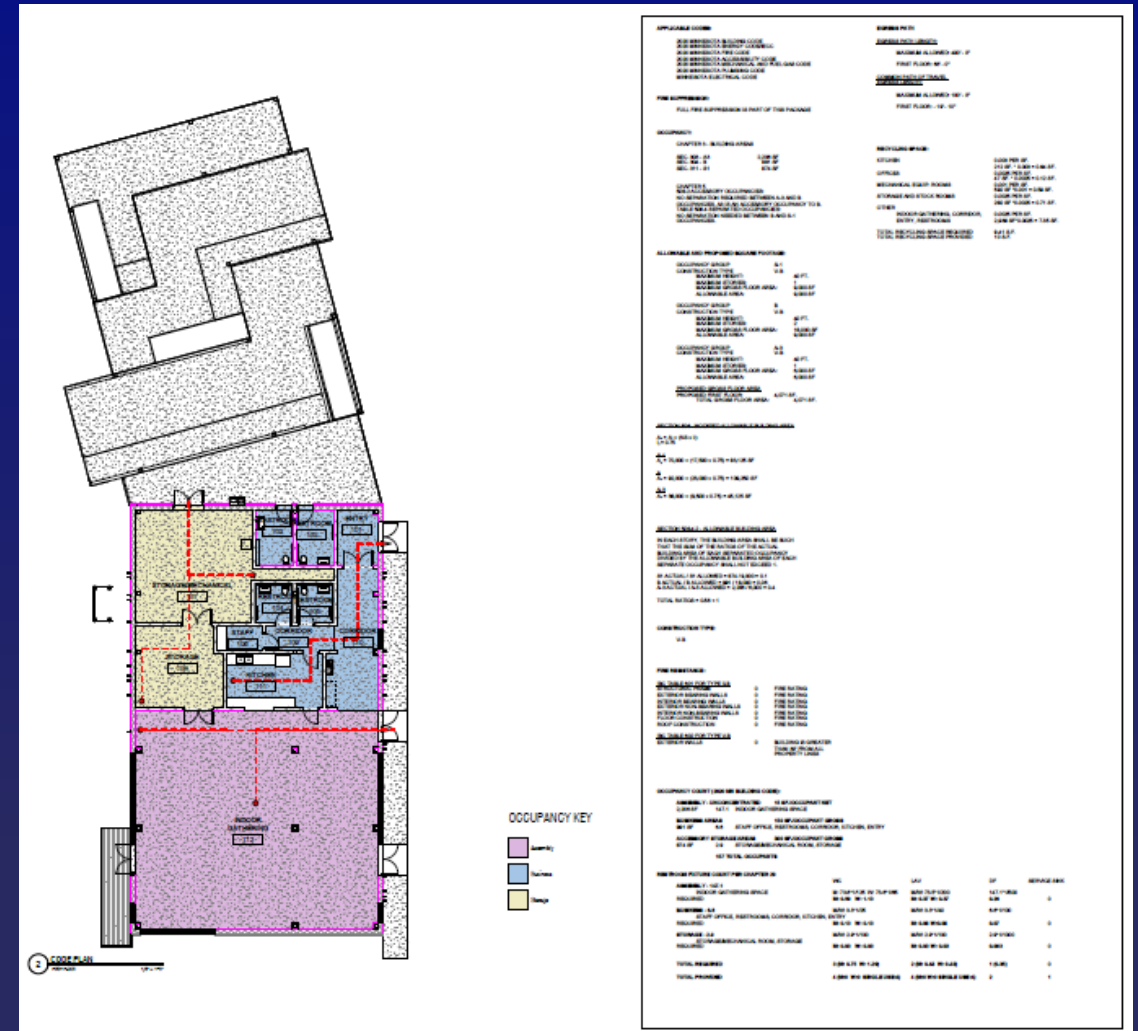
STRUCTURAL ABBREVIATIONS		MARKS AND SYMBOLS LEGEND	
1	CONCRETE	1	CONCRETE
2	STEEL	2	STEEL
3	WOOD	3	WOOD
4	GLASS	4	GLASS
5	MECHANICAL, ELECTRICAL AND PLUMBING	5	MECHANICAL, ELECTRICAL AND PLUMBING
6	ARCHITECTURAL FINISH AND INTERIORS	6	ARCHITECTURAL FINISH AND INTERIORS
7	EXTERIOR FINISH AND INTERIORS	7	EXTERIOR FINISH AND INTERIORS
8	FOUNDATION	8	FOUNDATION
9	GENERAL NOTES	9	GENERAL NOTES
10	GENERAL STRUCTURAL SYSTEM	10	GENERAL STRUCTURAL SYSTEM
11	FOUNDATION PLAN	11	FOUNDATION PLAN
12	1ST FLOOR PLAN	12	1ST FLOOR PLAN
13	2ND FLOOR PLAN	13	2ND FLOOR PLAN
14	3RD FLOOR PLAN	14	3RD FLOOR PLAN
15	MECHANICAL, ELECTRICAL AND PLUMBING	15	MECHANICAL, ELECTRICAL AND PLUMBING
16	ARCHITECTURAL FINISH AND INTERIORS	16	ARCHITECTURAL FINISH AND INTERIORS
17	EXTERIOR FINISH AND INTERIORS	17	EXTERIOR FINISH AND INTERIORS
18	DETAILS	18	DETAILS

GENERAL SYMBOLS		PLAN SYMBOLS LEGEND	
1	FOUNDATION SYSTEM	1	FOUNDATION SYSTEM
2	STEEL FRAMING SYSTEM	2	STEEL FRAMING SYSTEM
3	WOOD FRAMING SYSTEM	3	WOOD FRAMING SYSTEM
4	MECHANICAL, ELECTRICAL AND PLUMBING	4	MECHANICAL, ELECTRICAL AND PLUMBING
5	ARCHITECTURAL FINISH AND INTERIORS	5	ARCHITECTURAL FINISH AND INTERIORS
6	EXTERIOR FINISH AND INTERIORS	6	EXTERIOR FINISH AND INTERIORS
7	DETAILS	7	DETAILS

Not for Construction

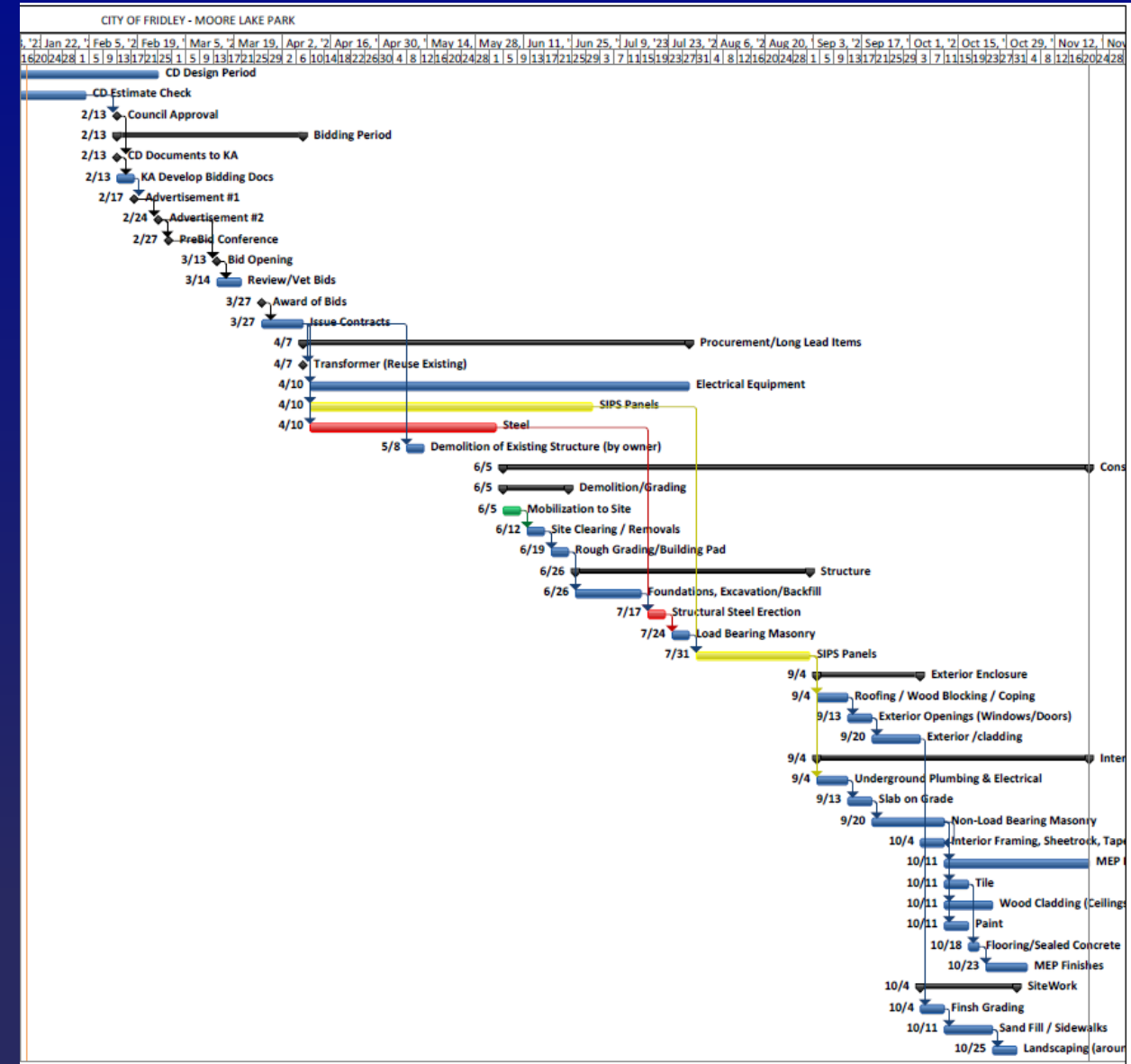
# Additional Work

- There is work outside the building plans that would be needed
- IT/Security package will be developed independently
- Furnishings and outfitting
- Benchmarking services
- Site improvements - forthcoming



# Schedule

- Building is on schedule
- Site is lagging a bit, but should be able to make up the time
- Award building end of March
- Begin procurement mid-April
- Sitework start in June
- Schedule changed to a single phase – would close park entirely





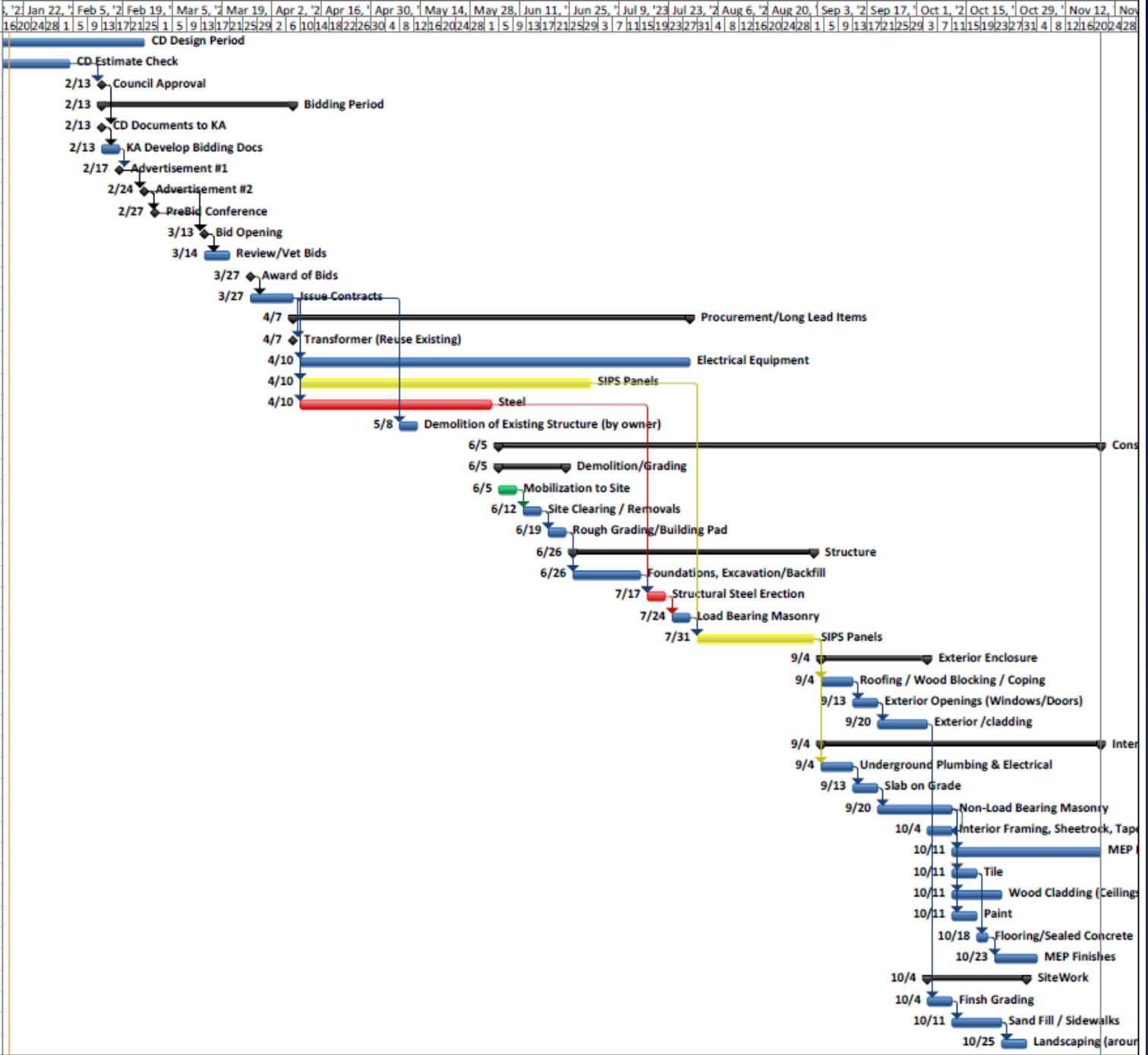
# Questions or Comments?

Moore Lake Project Updates



CITY OF FRIDLEY - MOORE LAKE PARK

ID	Task Mode	Task Name	Duration	Start	Finish	Predecessors
1		CD Design Period	60 days	Mon 12/5/22	Fri 2/24/23	
2	HT	CD Estimate Check	15 days	Mon 1/16/23	Fri 2/3/23	
3	HT	Council Approval	0 days	Mon 2/13/23	Mon 2/13/23	2
4		<b>Bidding Period</b>	<b>40 days</b>	<b>Mon 2/13/23</b>	<b>Fri 4/7/23</b>	
5		CD Documents to KA	0 days	Mon 2/13/23	Mon 2/13/23	3
6		KA Develop Bidding Docs	5 days	Mon 2/13/23	Fri 2/17/23	5
7		Advertisement #1	0 days	Fri 2/17/23	Fri 2/17/23	6
8		Advertisement #2	0 days	Fri 2/24/23	Fri 2/24/23	7FS+5 days
9		PreBid Conference	0 days	Mon 2/27/23	Mon 2/27/23	8FS+1 day
10		Bid Opening	0 days	Mon 3/13/23	Mon 3/13/23	9,8FS+11 days
11		Review/Vet Bids	5 days	Tue 3/14/23	Mon 3/20/23	10
12	HT	Award of Bids	0 days	Mon 3/27/23	Mon 3/27/23	
13		Issue Contracts	10 days	Mon 3/27/23	Fri 4/7/23	12
14		<b>Procurement/Long Lead Items</b>	<b>80 days</b>	<b>Fri 4/7/23</b>	<b>Fri 7/28/23</b>	
15		Transformer (Reuse Existing)	0 days	Fri 4/7/23	Fri 4/7/23	13
16		Electrical Equipment	80 days	Mon 4/10/23	Fri 7/28/23	13
17		SIPS Panels	60 days	Mon 4/10/23	Fri 6/30/23	13
18		Steel	40 days	Mon 4/10/23	Fri 6/2/23	13
19		Demolition of Existing Structure (by owner)	5 days	Mon 5/8/23	Fri 5/12/23	13FS+20 days
20		<b>Construction</b>	<b>122 days</b>	<b>Mon 6/5/23</b>	<b>Tue 11/21/23</b>	
21		<b>Demolition/Grading</b>	<b>15 days</b>	<b>Mon 6/5/23</b>	<b>Fri 6/23/23</b>	
22	HT	Mobilization to Site	5 days	Mon 6/5/23	Fri 6/9/23	
23		Site Clearing / Removals	5 days	Mon 6/12/23	Fri 6/16/23	22
24		Rough Grading/Building Pad	5 days	Mon 6/19/23	Fri 6/23/23	23
25		<b>Structure</b>	<b>50 days</b>	<b>Mon 6/26/23</b>	<b>Fri 9/1/23</b>	
26		Foundations, Excavation/Backfill	15 days	Mon 6/26/23	Fri 7/14/23	24
27		Structural Steel Erection	5 days	Mon 7/17/23	Fri 7/21/23	26,18
28		Load Bearing Masonry	5 days	Mon 7/24/23	Fri 7/28/23	27
29		SIPS Panels	25 days	Mon 7/31/23	Fri 9/1/23	28,17
30		<b>Exterior Enclosure</b>	<b>22 days</b>	<b>Mon 9/4/23</b>	<b>Tue 10/3/23</b>	
31		Roofing / Wood Blocking / Coping	7 days	Mon 9/4/23	Tue 9/12/23	29
32		Exterior Openings (Windows/Doors)	5 days	Wed 9/13/23	Tue 9/19/23	31
33		Exterior /cladding	10 days	Wed 9/20/23	Tue 10/3/23	32
34		<b>Interior Construction</b>	<b>57 days</b>	<b>Mon 9/4/23</b>	<b>Tue 11/21/23</b>	
35		Underground Plumbing & Electrical	7 days	Mon 9/4/23	Tue 9/12/23	29
36		Slab on Grade	5 days	Wed 9/13/23	Tue 9/19/23	35
37		Non-Load Bearing Masonry	15 days	Wed 9/20/23	Tue 10/10/23	36
38		Interior Framing, Sheetrock, Tape	5 days	Wed 10/4/23	Tue 10/10/23	37FF
39		MEP Rough In	30 days	Wed 10/11/23	Tue 11/21/23	37
40		Tile	5 days	Wed 10/11/23	Tue 10/17/23	37
41		Wood Cladding (Ceilings and Walls)	10 days	Wed 10/11/23	Tue 10/24/23	37
42		Paint	5 days	Wed 10/11/23	Tue 10/17/23	37
43		Flooring/Sealed Concrete	3 days	Wed 10/18/23	Fri 10/20/23	40
44		MEP Finishes	10 days	Mon 10/23/23	Fri 11/3/23	43
45		<b>SiteWork</b>	<b>20 days</b>	<b>Wed 10/4/23</b>	<b>Tue 10/31/23</b>	
46		Finsh Grading	5 days	Wed 10/4/23	Tue 10/10/23	33
47		Sand Fill / Sidewalks	10 days	Wed 10/11/23	Tue 10/24/23	46
48		Landscaping (around building)	5 days	Wed 10/25/23	Tue 10/31/23	47







landscape structures

Moore Lake Park

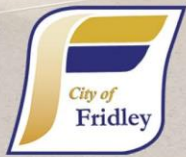
Fridley\_MooreLake 103122 • 11.01.2022



©2022 Landscape Structures. All Rights Reserved.







**Moore Lake Park Facility**  
*Indoor Gathering*



# Smart Glass by Viracon

